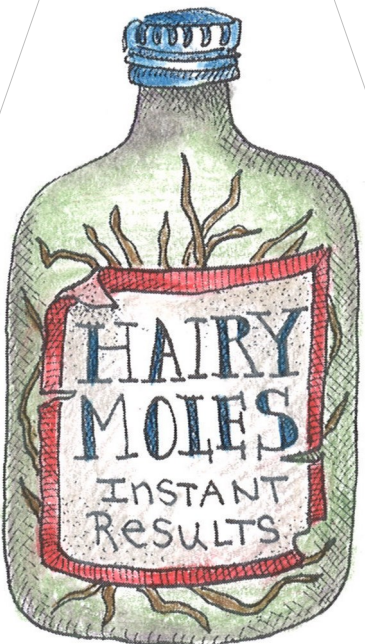
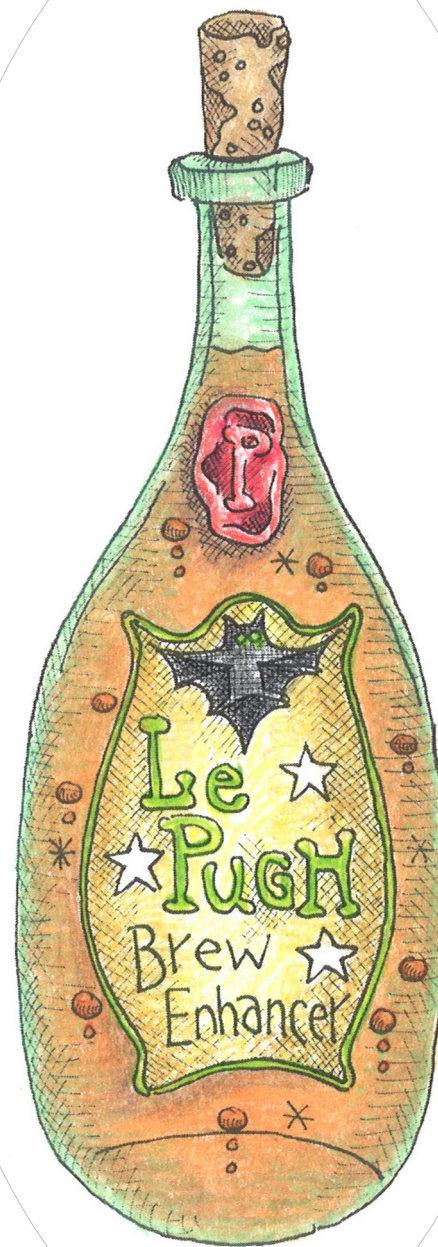


*If the  
Hat Fits,  
Wear It...*





Images property of Meg Hawkey Crabapple Hill Studio

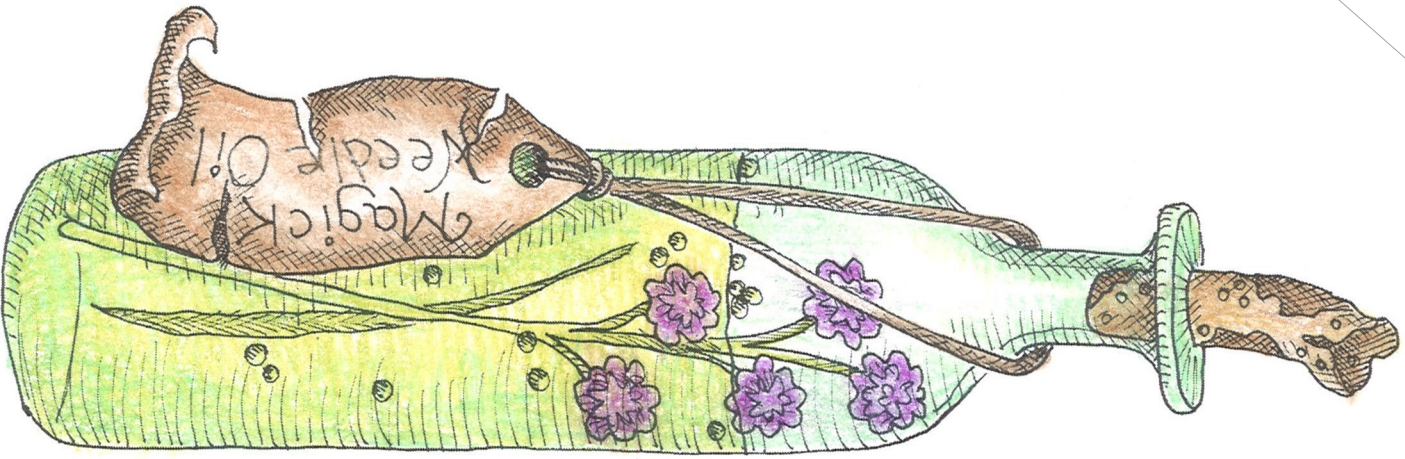
Personal Use Only! Not For Resale!



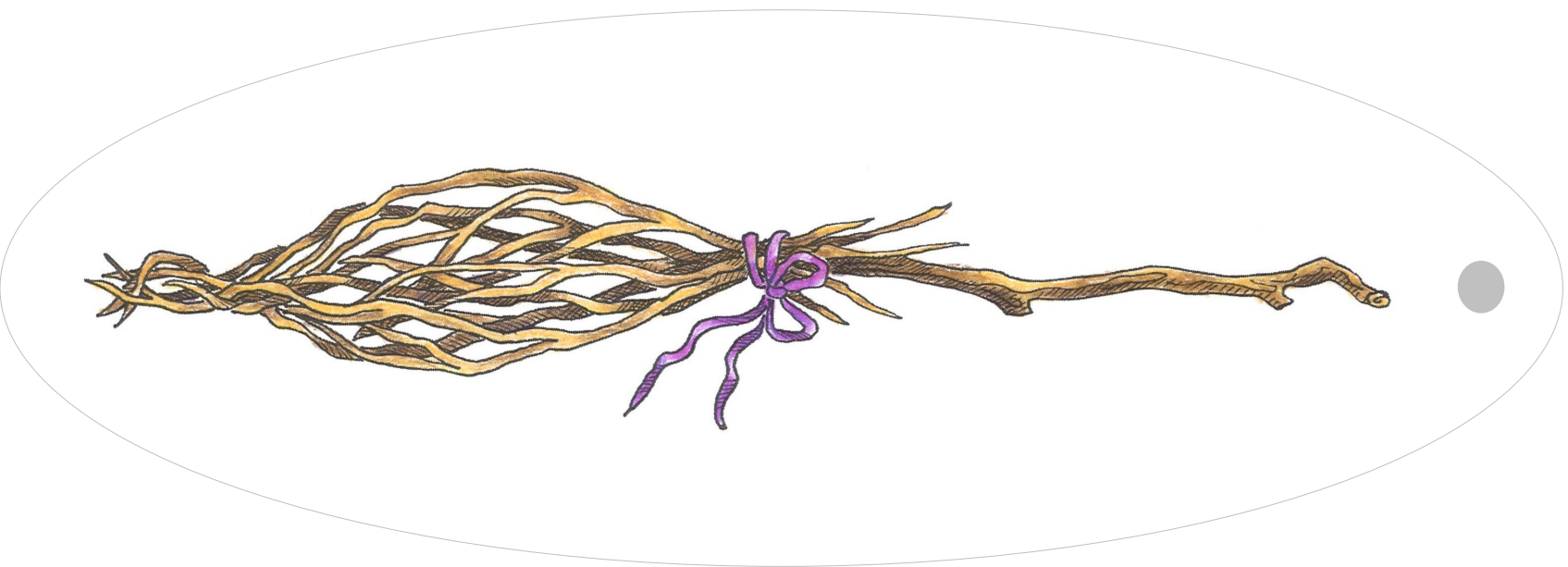
Images property of Meg Hawkey Crabapple Hill Studio

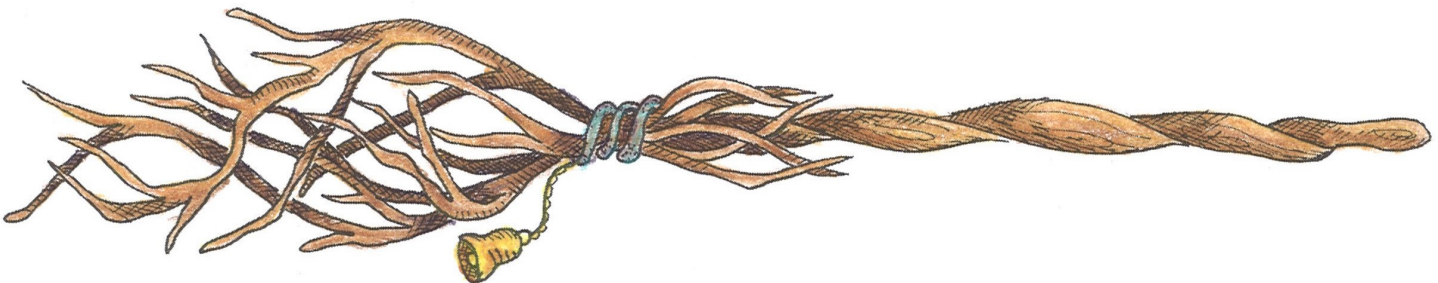
Personal Use Only! Not For Resale!















### Directions:

- Print the images in color onto cardstock (preferably ecru, but white is fine). Cut out and make holes with a paper punch or awl.
- Make strong coffee (4x the usual strength for drinking). Cool.
- Distress the tags by tearing the edges a bit. Take chunks out here and there. Crumple the tags a little bit, then re-flatten.
- Arrange the tags on paper towels on top of plastic (I use a garbage bag that is split in half).
- Use a sponge, spray bottle or drippy topped bottle, to drip the liquid on the tags. Concentrate on the torn parts because they'll soak up the dye nicely.
- Dab with paper towels to pick up pooled excess.
- Let Dry. Re-spray, spatter, or dab if you'd like, and let dry again.
- If your tags are too curled, flatten them and place something heavy on top for a bit.
- Fold 10" lengths of ribbon, seam binding, old lace, baker's twine, raffia, torn strips of fabric, or twine, in half. Poke the folded end through the holes from front to back. Push the ends through the loop and pull to tighten.
- Tie the tags on twigs or hang on a thick twine line with little clothespins (you can dye them also!)
- To make a Halloween Tree, find a large leafless branch/branches with twiggy ends. Find a receptacle to put it/them in.
- Place a few rocks in the bottom of the receptacle to stabilize the twigs and keep it from tipping over.
- Arrange the twigs among the rocks, then fill to near the brim with crumpled tissue paper.
- Place green moss, grey moss, raffia, fabric scraps, or Halloween candy on the tissue paper to completely cover it.
- You can also place rocks in the bottom, line the receptacle with plastic (garbage bag), arrange twigs, then squirt foam insulation into the bottom until it puffs up as desired. Let it dry around the branches for a long lasting display. To remove, the foam must be cut away with a knife. Have Fun!!