



# WHAT THE HECK IS A NAITSA?

We're here for NAIT students. We run Nest Fest and tons of other awesome events, support clubs, offer services like student health benefits and Peer Support, and we run your campus bar, Nest Eatery. We made you this handbook. What else? Academic grievances? Looking for a tutor? **We've got you covered.**

Head over to page 9 for a list of everything we do for you.

**naitsa**



# TABLE OF CONTENTS

<b>WELCOME TO NAIT!</b>	<b>1</b>	NAITSA Campus Clubs	<b>33</b>
Orientation	2	Types of Clubs	
Set Up for Success	3	How to Start a Club	
MyNAIT Portal		How to Join a Club	
OneCard		Office of Equity, Diversity and Inclusion	34
Student Service Centre		International and Intercultural Centre	35
Shop@NAIT		Nisóhkamátotân Centre	36
U-Pass	4	<b>YOUR CAMPUS NEWS</b>	<b>37</b>
Parking Services	6	NAIT Newswatch	
Campus Safety and Security	7	NR92 Radio	
<b>WE ARE NAITSA</b>	<b>9</b>	The NAIT Nugget	38
What is NAITSA?	10	<b>FOOD ON CAMPUS</b>	<b>39</b>
NAITSA Senate	12	Microwaves	
NAITSA Executive Council	13	Artisanal Food Market	
President		Eat@NAIT	
VP Academic		Ernest's Dining Room	
VP Internal		Nest Eatery	41
NAITSA Operating Budget	18	<b>ACADEMIC RESOURCES</b>	<b>43</b>
NAITSA Fee Structure	19	Student Academic Rights Advisor	44
<b>HEALTH AND WELLNESS</b>	<b>21</b>	Student Conduct & Community Conflict	45
NAITSA Health and Dental Benefits	22	Nimbus Learning	46
Mental Health Resources	24	NAIT Advising	46
MyWellness		Learning Services	47
NAITSA Peer Support		Disability Services	
NAIT Student Counselling		Learning Supports	
NAITSA's PAWSS Program	26	Library Services	48
Athletics and Recreation	27	Services and Support	
Recreation Facilities		Study and Work Spaces	
Recreation Programs		Technology	
Health, Safety and Environment Services	28	<b>STUDENT SUPPORTS</b>	<b>49</b>
<b>GET CONNECTED</b>	<b>29</b>	Financial Supports	50
NAITSA's Ooks Life	30	K.O.F.E.	
Ooks Life Team		NAIT Scholarships and Bursaries	
Campus Events		Emergency Short-Term Loans	
Event Pass		NAIT Financial Aid	
Involvement Record		NAITSA Emergency Food Centre	51
Paths		<b>DAYTIMER</b>	<b>53</b>
Milestone			

THIS HANDBOOK BELONGS TO \_\_\_\_\_

CONTACT INFO \_\_\_\_\_

We honour and acknowledge that NAITSA is on Treaty 6 territory and a traditional homeland for the First Nations and Métis peoples. NAITSA recognizes the contributions of First Peoples to the vibrant NAIT campus and the overall success of NAIT.

Land acknowledgements are an opportunity to reflect on colonialism and its historical context as well as its ongoing current context. Now more than ever this recognition of this relationship is critical, as we strive to honour and transform our relationships with Aboriginal communities.

A land acknowledgement is more than words; it is a call to action, and we at NAITSA invite you to share your own calls to action and inspirations as we continue to move towards truth and reconciliation.

**We know we have a responsibility to think beyond ourselves and think beyond today.**



Main Campus O-108  
11762-106 Street,  
Edmonton, AB. T5G 3H4

780.471.8855  
[asknaitsa@nait.ca](mailto:asknaitsa@nait.ca)  
[naitsa.ca](http://naitsa.ca)

---

*The NAIT Students' Association has provided this student handbook in an effort to provide helpful information to the student body. This handbook is not intended to be advice of any kind, legal, business, financial or otherwise, and should not be relied on for those purposes. This handbook should only be used as one source of information. Each student should conduct their own due diligence in investigations and inquiries into the topics raised in this handbook. While NAITSA has used its best efforts to ensure the accuracy of the information in this student handbook at the time of publication, the information is subject to change. As such, NAITSA does not make any assurances regarding the accuracy of the information contained herein. NAITSA will not be responsible for any damages that may incur, including special or consequential damages or lost profits (whether foreseeable or not) by relying in any way on the information given herein.*



# WELCOME TO NAIT!

Whether this is your first year of post-secondary or a continuation of your journey, we're thrilled you're here.

This handbook is full of resources to help you make the most of your time at NAIT. Whether you need support with your mental health, learning or finances, if you're looking for community, a place to grab some lunch, or the latest campus news—we've got you covered!

## NAIT Bucket List:

- Check out Nest Fest *September 12-13, CAT Quad*
- Complete the New Student Experience *ookslife.ca*
- Sign up for NAITSA's newsletter *naitsa.ca/insider*
- Meet NAITSA's PAWSS dogs *(p26)*
- Join or start a club! *(p33)*
- Contribute to the Nugget *(p38)*  
- articles, videos or photos!
- Cast your vote (or campaign) in student elections *(p12/13)*
- Grab a bite at the Nest Eatery *(p41)*  
- events most Thursdays!
- Take a selfie w/ the Ooks Life wings *(in CAT)*
- Buy NAIT gear *(p3)*
- Stay active w/ NAIT rec programs *(p27)*
- Volunteer w/ NAITSA *naitsa.ca/volunteers*
- Explore NAIT's Makerspace *(p48)*

## ORIENTATION

NAIT Student Orientation (NSO) welcomes students to NAIT and provides information, resources, and tools to help you succeed in student life at NAIT.

[NAIT.CA/ORIENTATION](https://www.nait.ca/orientation)

### Online NSO

The Online NAIT Student Orientation is a virtual, asynchronous, and engaging presentation that you can complete at your own pace and time but should be completed before attending the on-campus orientations. This orientation is accessible to all students and is a resource to refer to at any time during your education journey at NAIT.

### On-Campus NSO

The On-Campus NAIT Student Orientation is an in-person event where you can meet fellow peers, leadership, and staff, get to know your way around campus on a campus tour, and enjoy free food, activities, prizes, and more.

### Program Orientation

As part of your welcome to NAIT and in addition to the NAIT Student Orientation, your program will offer a Program Orientation.

The Program Orientation provides you with detailed information specific to your program and the opportunity to meet instructors, staff, and other students in your classes.

### International Orientation

In addition to the aforementioned three orientations, the International Orientation supports students in their cultural transition to prepare for a new life in Canada and at NAIT. Students learn how to navigate the various cultural similarities and differences they will encounter.

You should complete the Online NSO and attend the On-Campus NSO, your Program Orientation, and International Orientation as each covers different information to help set you up for success.

For further information on your orientation to NAIT, check out NAIT Student Orientation on your MyNAIT Student Portal.



## SET UP FOR SUCCESS

### MyNAIT Portal

Manage your NAIT accounts, academics, and services online with the MyNAIT Portal. Get access to courses and payments, personalized news, and the latest updates from across campus. Access it with your NAIT student credentials at [my.nait.ca](https://my.nait.ca)

**MY.NAIT.CA**

### IDENTITY AFFIRMATION

NAIT affirms the identity of our students by using their preferred/chosen names and personal pronouns. You can add a preferred/chosen name and pronouns to your profile through Self-Service in the Student Portal. Once added, these values will appear on your OneCard, class lists, and some of NAIT's systems, including Moodle. For more information, visit [nait.ca/pronouns](https://nait.ca/pronouns)

### OneCard

Your OneCard serves as your official NAIT identification card, and it also allows you to add funds to use at eat AT NAIT and shop AT NAIT locations and wherever OneCards are accepted. The OneCard gives you access to all of NAIT's recreation facilities, library, printing on campus, and U-Pass access to Edmonton Transit Services (ETS).

**NAIT.CA/ONE**

MAIN CAMPUS, CAT180N

### Student Service Centre

The NAIT Student Service Centre (SSC) is here to help you on your path to academic success. Whether you're exploring a program, applying online, attending classes, or preparing to graduate, we're here to help! Many of your needs can be met through self-service options. If you still require assistance, our services are offered in-person, email, phone, and online chat.

**NAIT.CA/SSC**

MAIN CAMPUS, CAT180

### Shop@NAIT

Buy textbooks, course materials, and office supplies. NAIT and Ooks apparel is also available including t-shirts, sweatshirts, hats, and more. Shop at three campus locations, or skip the lines and order online for in-person pickup!

**SHOP.NAIT.CA**

MAIN CAMPUS, X114

PATRICIA CAMPUS, P135

SOUCH CAMPUS, Z155A



## U-PASS

The Universal Transit Pass (U-Pass) is a group discount program that lowers the cost of transit for NAIT students. NAITSA and NAIT are proud to be the first post-secondary institution in Canada that has integrated SmartFare transit technology with the OneCard student identification card!

**NAITSA.CA/UPASS**

MAIN CAMPUS, O108 (NAITSA)

All eligible credit students are automatically charged a U-Pass fee of \$180 per semester (Fall and Winter terms). **The U-Pass is not currently available in the Spring or Summer terms.** Apprentices and exclusively online students are not eligible for the U-Pass.

### HOW TO ACTIVATE YOUR U-PASS

1. Check if you are eligible for the U-Pass. If eligible, the fee will appear on your student financial statement on MyNAIT Portal.
2. Pay your tuition and all fees—including the U-Pass fee—in full.
3. Have a valid and current OneCard, which is your NAIT student ID (as of Fall 2021).
4. Log into your MyNAIT Student Portal to activate your U-Pass.
5. Tap your OneCard when using public transit in the service areas.
6. Enjoy your ride!

### U-Pass Service Areas

Participating transit authorities:

- Edmonton Transit
- Strathcona County Transit
- Spruce Grove Transit
- Leduc Transit
- Fort Saskatchewan Transit
- Beaumont Transit
- St. Albert Transit

The above transit authorities:

- Reserve the right to verify the validity of any student's U-Pass.
- Reserve the right to modify their respective transit routes and schedules.

A participating student who fails to comply with the rules, regulations, policies, and bylaws of the aforementioned transit authorities may have ridership privilege revoked without refund of the U-Pass fee.



**SCAN THE QR CODE FOR A STEP-BY-STEP VIDEO ON HOW TO ACTIVATE YOUR U-PASS.**

All credit students at NAIT are assessed a U-Pass fee, except for exclusively online students and apprentices. For more detailed information about eligibility and exemption criteria, please visit [naitsa.ca/upass](https://naitsa.ca/upass)

## U-PASS

### Lost or Stolen OneCards

If your OneCard is lost or stolen, you can deactivate it online via your MyNAIT Student Portal. There is a \$25 replacement fee (payable at the OneCard office). For more information, visit [nait.ca/upass](https://nait.ca/upass)

### U-Pass Exemptions

NAITSA does not accept exemption applications via email or phone. To apply for an exemption, complete the U-Pass Exemption Form with the supporting documentation by the assigned deadline at [nait.ca/upass-exemption](https://nait.ca/upass-exemption)

#### FALL TERM EXEMPTION DEADLINE

September 27, 2024 at 4:00pm

#### WINTER TERM EXEMPTION DEADLINE

January 31, 2025 at 4:00pm

An exemption application form must be completed for each term of eligibility, year to year. **Exemption requests do not carry forward.**

### WHO IS ELIGIBLE FOR AN EXEMPTION?

- Transit staff
- Seniors (65+)
- Those receiving AISH financial assistance
- Disabled Adult Transit Service (DATS) (or equivalent services from participating transit authorities) users with a valid registration card
- Double-enrolled students (students that attend both NAIT and another school providing the U-Pass)
- Students who live outside the 100km radius of the NAIT campus where their in-person classes are delivered
- Practicum students outside the service areas (students on practicum eight weeks or longer, whose applicable course begins before the respective deadline of that term, may be eligible)





## PARKING SERVICES

Parking Services manages and maintains all parking spaces on campus for staff, students, and visitors. With high user demand and limited space, students are encouraged to bike, carpool, or use public transportation as their first option.

**NAIT.CA/PARKING**  
MAIN CAMPUS, CAT180N

Hourly and daily parking is available at Main Campus, Patricia, and Souch. You can pay through pay-by-plate parking machines or through the Honk mobile app. Honk also offers a parking multi-pack.

### EVENING & WEEKEND HOURS

Evening parking hours:

Monday to Friday, 4:30pm - 11:30pm

Weekend parking hours:

Saturday/Sunday, 6:00am - 11:30pm

### Monthly Parking Permits

NAIT Parking permits are sold on a first-come, first-served basis. Availability varies throughout the year. New parking permits can become available throughout the year due to cancellations.

Once the permits sell out for the duration of your class dates, it is up to you to check regularly if permits are available by checking online at your MyNAIT Student Portal or calling 780.378.6989.

Parking permits can be purchased online; please visit your MyNAIT Student Portal for more details.

### Enforcement in Effect

You must have a valid parking permit or valid payment when parking on campus. Parking Services maintains ongoing enforcement across all parking zones on campus and will issue citations. Vehicles may also be towed at the owner's expense.

**Please respect parking bylaws. Do not infringe on parking spaces in nearby residential and business properties.**

For more information, visit [nait.ca/parking](https://nait.ca/parking)



## CAMPUS SAFETY AND SECURITY

Protective Services works together with the NAIT community to maintain a safe and secure learning and work environment. We provide professional service 24 hours a day, seven days a week, working collaboratively with students and staff to protect safety, investigate concerns, and maintain a secure campus environment. We are committed to providing professional, responsive, and helpful service.

**NAIT.CA/SECURITY**  
MAIN CAMPUS, D104

### Our Services

Call us 24/7 at 780.471.7477 to request any of our services.

#### PATROL & RESPONSE SERVICES

Our Community Peace Officers and Security Agents are on duty 24/7 providing a visible campus patrol presence, incident response, and investigative services.

#### DISPATCH & FRONT COUNTER SERVICES

Situated in D104, Security Communications Officers evaluate and dispatch information and/or complaints from both callers and walk-in clients.

#### MONITORING SERVICES

Our Protective Services team provides monitoring and oversight of NAIT's fire safety system, CCTV system, access control and alarm systems, NAIT's "Blue" Phones, and the NAIT Alert system.

#### SAFE WALK PROGRAM

If you don't feel comfortable walking alone on or around campus, our Community Peace Officers and Security Agents can accompany you to your destination. Call Protective Services anytime to request a "Safe Walk."

#### PUBLIC EDUCATION & AWARENESS

Community Peace Officers participate in outreach presentations to campus organizations and groups.

#### ENFORCEMENT SERVICES

Our Community Peace Officers have specific authorities to enforce certain provincial statutes/regulations and municipal bylaws.

#### OTHER SERVICES

Security Assessments, Special Event Security Duties, Lost & Found Property, Bike Index Program, Bike Lock Program, Vehicle Assistance (courtesy boosts).

### Be Prepared

Emergency preparedness is everyone's responsibility. Take these steps so you know what to do before, during, and after an emergency:

- Familiarize yourself with NAIT's emergency procedures, posted in every classroom and on NAIT's emergency website at [nait.ca/emergency](http://nait.ca/emergency)
- Keep your personal and emergency contacts up-to-date on the MyNAIT portal, should we need to verify your safety or reach your contacts in an emergency.
- Participate in any drills and exercises
- Follow directions from emergency wardens in an emergency





# GET SOCIAL

## NAIT STUDENTS' ASSOCIATION (NAITSA)



naitsa.ca



@naitstudents



NAIT Students'  
Association



@naitsa



@naitstudents

## OOKS LIFE (NAITSA EVENTS)



ookslife.ca



@ookslife



Ooks Life



@ookslife



@ookslife

## CAMPUS CLUBS



naitsa.ca/clubs



@naitsaclubs

## NEST EATERY



nestatnait.ca



@nestatnait



Nest at NAIT

## THE NAIT NUGGET



thenuggetonline.com



@thenaitnugget



The NAIT Nugget



@thenaitnugget



@thenaitnugget



## NORTHERN ALBERTA INSTITUTE OF TECHNOLOGY (NAIT)



nait.ca



@nait



NAIT



@nait



# WE ARE NAITSA

## AND WE'RE HERE FOR YOU

From getting good grades to having a good time, NAITSA has everything you need to make the most of your time at NAIT:

- 04 U-PASS**  
Affordable public transit for NAIT students.
- 12 SENATE**  
Oversees the Executive Council, approves the NAITSA budget and amends bylaws.
- 13 EXECUTIVE COUNCIL**  
Leads NAITSA as an organization and represents the NAIT student body.
- 22 HEALTH & DENTAL PLAN**  
Medical, dental, vision—we've got you covered.
- 24 MYWELLNESS**  
Free mental health support and resources online.
- 25 PEER SUPPORT**  
Anonymous, confidential, supportive listening.
- 26 PAWSS PROGRAM**  
Pets Assisting with Student Success at NAITSA.
- 30 LOOKS LIFE**  
Hub for student life on campus: events, clubs, volunteering, and more.
- 33 CAMPUS CLUBS**  
Find your people—expand and enhance your NAIT experience.
- 38 THE NAIT NUGGET**  
NAIT's student-led news, available in print and online.
- 39 MICROWAVES**  
We provide and maintain microwaves across campus.
- 41 NEST EATERY**  
Great food and drink, at student-friendly prices.
- 44 SARA**  
NAITSA's Student Academic Rights Advisor.
- 46 NIMBUS LEARNING**  
Find a tutor, or become one!
- 50 K.O.F.E.**  
Knowledge of Financial Education, brought to you by NAITSA.
- 50 ESTL**  
Emergency Short-Term Loans for qualifying students.
- 51 EMERGENCY FOOD CENTRE**  
Emergency food hampers for students in need.

## WHAT IS NAITSA?

Since 1964, NAITSA has been here for you. Providing important student services, opportunities to de-stress and have fun like clubs and events, and necessary advocacy for the student voice, NAITSA is for students, by students.

**NAITSA.CA**  
MAIN CAMPUS, O108

### Mission

Our mission is to enhance the NAIT student experience by providing student-driven services, advocating for student rights, representing their voice, and creating a culture of engagement and leadership.

### Values

#### CONNECTION

NAITSA is proud of the opportunities we provide for students to develop their soft skills, which may not be available in every classroom. Volunteering, employment opportunities, and clubs are all great ways to network, learn leadership skills, and build your resume.

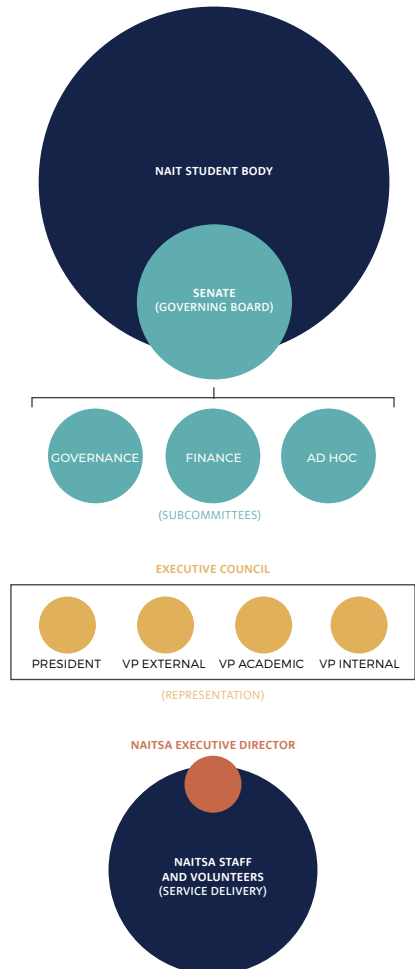
#### GROWTH

NAITSA was created in 1964 under mandate by the Government of Alberta. We hold a number of positions on a local, provincial and national level to advocate for our students' interests. We are always striving to find the best opportunities for students to be exceptional during their time at NAIT. Those positions include, but are not limited to:

- Executive Council and Senate
- NAIT Board of Governors
- NAIT Academic Council
- Alberta Students' Executive Council
- Consultation with NAIT Staff Association regarding student/teacher relations

### REPRESENTATION

The NAIT Students' Association works hard to protect the best interests of our students both within NAIT, and at the municipal, provincial, and federal government levels. NAIT students are represented by their Executive Council. The student body elects these student leaders annually.





## WHAT IS NAITSA?

### Accessing Our Services

Drop by during office hours to speak to us in person, or visit our website to use LiveChat.

### LIVECHAT

LiveChat is available at [naitsa.ca](https://naitsa.ca) during office hours. There are real people answering your questions—no bots here! When you visit our website, our LiveChat bubble will pop up. Send us a message and we'll be happy to help!

### HOURS OF OPERATION

Monday – Friday from 8:00am – 4:00pm\*

\* Hours may be subject to change due to holidays or other campus closures. Please refer to [naitsa.ca/contact](https://naitsa.ca/contact) for the most up-to-date information.

### NAITSA Insider Newsletter

Do you hate being the last one to know what's happening on campus?

Become a NAITSA insider and always be the first to know about NAIT news, events, and promos for students and staff. Sign up at [naitsa.ca/insider](https://naitsa.ca/insider)

### Student Perks & Deals

Score great deals and perks on a variety of services, products, activities, and events, thanks to your NAIT Students' Association.

To see all the current deals we've collected for you, visit [naitsa.ca/perks](https://naitsa.ca/perks)



## NAITSA SENATE

The Senate is the governing body of NAITSA and is elected by the student body annually to make high-level decisions in the best interests of students and oversee the Executive Council.

[NAITSA.CA/SENATE](https://naitsa.ca/senate)

The Senate is comprised of 12 students, elected annually in October, to represent five campus electoral zones. The Senate is responsible for passing bylaws, approving the annual budget, and holding the Executive Council accountable.

The Senate is a great opportunity for students to participate in their Students' Association, and the elected position will appear on their Involvement Record. There are two evenings of training followed by 10 Senate meetings throughout the year (held on Wednesdays).

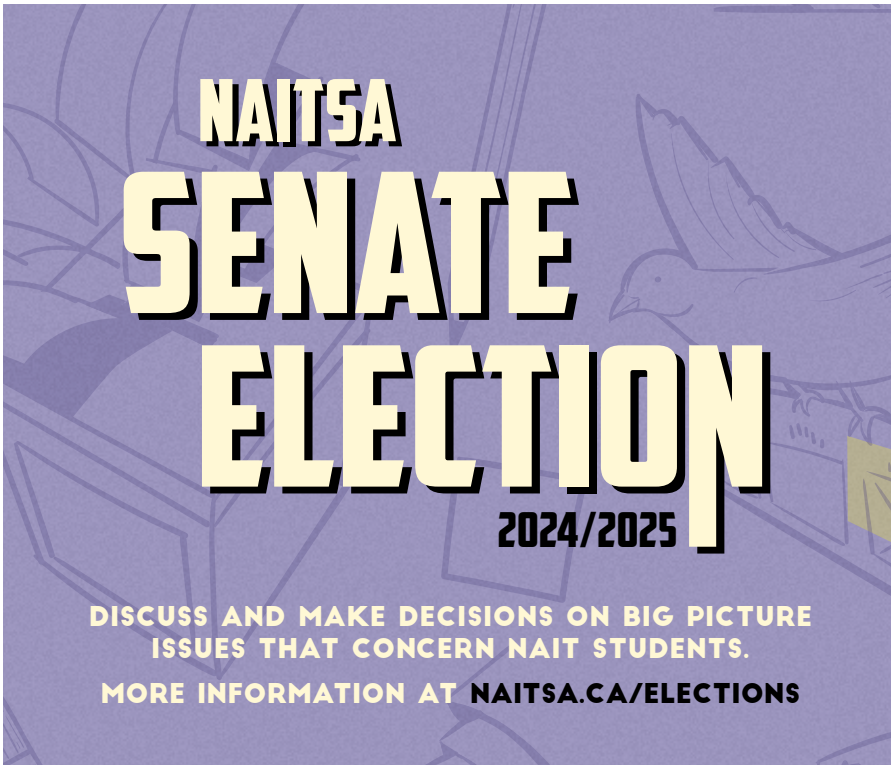
Information and nomination packages will be available during the Senate nomination period for interested students. These packages contain details on expectations, time commitment, electoral bylaws, and candidate eligibility.

If you are interested in running for a seat on the NAITSA Senate, visit [naitsa.ca/elections](https://naitsa.ca/elections) or email Leanne Mills at [leannem@nait.ca](mailto:leannem@nait.ca)

### SENATE NOMINATION PERIOD

August 27 – September 25, 2024 at 4:00pm\*

\* Dates may be subject to change, refer to [naitsa.ca/elections](https://naitsa.ca/elections) for the most up-to-date information.

A purple poster with a faint background illustration of a bird and a building. The text is in bold, white, sans-serif font with black outlines. The main title 'NAITSA SENATE ELECTION' is stacked vertically, with '2024/2025' below it. At the bottom, there are two lines of text: 'DISCUSS AND MAKE DECISIONS ON BIG PICTURE ISSUES THAT CONCERN NAIT STUDENTS.' and 'MORE INFORMATION AT NAITSA.CA/ELECTIONS'.

**NAITSA  
SENATE  
ELECTION  
2024/2025**

**DISCUSS AND MAKE DECISIONS ON BIG PICTURE  
ISSUES THAT CONCERN NAIT STUDENTS.**

**MORE INFORMATION AT [NAITSA.CA/ELECTIONS](https://naitsa.ca/elections)**

## NAITSA EXECUTIVE COUNCIL

Elected by the student body annually, NAITSA's Executive Council represents NAIT students across campus and government, advocates for student rights, and pursues important student initiatives.

[NAITSA.CA/EXECUTIVE-COUNCIL](https://naitsa.ca/executive-council)

The Executive Council consists of the President, Vice President Academic, Vice President External, and Vice President Internal. Each executive holds a portfolio covering different aspects of student life.

NAITSA Executives serve one-year salaried terms, working full-time within the NAITSA office. This is a great opportunity to lead a multi-million dollar organization and grow leadership skills while representing NAIT students. Executive Council members have the opportunity to network with other student leaders from across Canada and engage with local and provincial governments.

Information and nomination packages will be available during the Executive Council nomination period for interested students. These packages contain details on expectations, time commitment, electoral bylaws, and candidate eligibility.

If you are interested in running for a position on the NAITSA Executive Council, visit [naitsa.ca/elections](https://naitsa.ca/elections) or email Leeanne Mills at [leeannem@nait.ca](mailto:leeannem@nait.ca)

### EXECUTIVE COUNCIL NOMINATION PERIOD

January 2 – January 27, 2025 at 4:00pm\*

\* Dates may be subject to change, refer to [naitsa.ca/elections](https://naitsa.ca/elections) for the most up-to-date information.

A large orange graphic with a background of faint architectural drawings. The text is centered and reads: "NAITSA EXECUTIVE COUNCIL 2025/2026". Below this, it says "REPRESENT THE NAIT STUDENT BODY. LEAD THE NAIT STUDENTS' ASSOCIATION." and "MORE INFORMATION AT NAITSA.CA/ELECTIONS".

**NAITSA**  
**EXECUTIVE**  
**COUNCIL**  
**2025/2026**

**REPRESENT THE NAIT STUDENT BODY.**  
**LEAD THE NAIT STUDENTS' ASSOCIATION.**

**MORE INFORMATION AT [NAITSA.CA/ELECTIONS](https://naitsa.ca/elections)**

## EXECUTIVE COUNCIL

### THE PRESIDENT

The President acts as the spokesperson for NAITSA, chairs Executive Council meetings, and supervises the Executive Director on behalf of the Executive Council. They also act as the liaison to NAIT administration, NAIT alumni, student members of the NAIT Board of Governors, and various campus student groups. The President must show strong leadership skills, as they support the other members of the Executive Council and the Executive Director.

### VP ACADEMIC

The Vice President Academic is the official advocate for academic concerns or changes at NAIT. They are a representative on NAIT's Academic Council and NAIT's Academic Staff Association and are responsible for appointing students-at-large to NAIT's Academic Council. The VP Academic works closely with NAITSA's Student Academic Rights Advisor (SARA) to identify academic-related grievances that students face and advocate for change in the best interest of our student members. This role advocates on students' behalf to various NAIT departments on academic-related issues and policy changes at NAIT.

### VP EXTERNAL

The Vice President External focuses primarily on external relations and advocacy. They advocate on students' behalf to various external bodies such as NAIT administration, local municipalities, and the federal and provincial governments. The VP External meets with administrators, MLAs and MPs on issues such as tuition and fees, financial aid, transit service, and many others. They sit on various committees and travel to attend conferences within the province and across the country.

### VP INTERNAL

The Vice President Internal works to provide services to students and enhance the student experience at NAIT. This position supports the Ooks Life initiative within NAITSA, handles non-academic concerns, and is the liaison with NAIT's Polytechnic Education and Student Success Department. They work with the NAITSA events team and Ooks Life Team to develop the NAITSA events calendar for the year. The VP Internal chairs Ooks Life Team meetings, collaborates with department leaders, attends events, and participates in retreats.



## NAITSA PRESIDENT

Hello fellow Ooks! I'm Jenna Luczak, and I'm thrilled to be serving as your NAITSA President for the 2024/25 term.

**SAPRESIDENT@NAIT.CA**  
MAIN CAMPUS, O108 (NAITSA)

If you're a first year student, welcome to the NAIT community! If you've returned to continue your studies, I'm happy to see you back on campus! My journey with NAIT began in 2018 to study Graphic Communications, and I returned in 2022 to pursue accounting. I encourage every student to get involved with NAITSA, whether it's through volunteer opportunities, job opportunities, or student governance. Personally, I went down the student governance route. I started as a NAITSA Senator, then was elected NAITSA's VP External for the 2023/24 term. These roles allowed me to engage with the broader NAIT community and advocate for the needs and aspirations of our student body. And now, as your President, I'm here to hold NAIT accountable and amplify your voices even further.

Your time at NAIT flies by, so it's important to slow down and make time for yourself! You can often find me doing jigsaw puzzles, watching true crime documentaries, or embracing new hobbies such as crocheting or learning new instruments. Student life can be overwhelming, so please remember to prioritize yourself!

Students are the heartbeat of NAIT, and I am honored to serve you this year. Together, the NAITSA Executive Council will represent the NAIT student body with integrity and patience, nurturing a culture of respect, inclusivity, and open dialogue within our dynamic campus community.

If you have any questions, comments, or concerns regarding how we can enhance NAITSA's support for you, please contact me at [sapresident@nait.ca](mailto:sapresident@nait.ca). Enjoy your time here at NAIT, and best wishes for your studies!

Jenna Luczak  
NAITSA PRESIDENT





## NAITSA VP ACADEMIC

Hello my fellow Ooks, I'm Marina Bruno, and it brings me great joy to continue serving as your Vice President Academic for the 2024/2025 academic year!

[SAVPACADEMIC@NAIT.CA](mailto:SAVPACADEMIC@NAIT.CA)  
MAIN CAMPUS, O108 (NAITSA)

As a NAIT Alumni and current student, my journey at NAIT started back in 2015 when I got accepted into the Personal Fitness Trainer program. I am now pursuing my Bachelor of Business Administration majoring in Human Resources Management. Throughout my tenure, I've integrated myself deeply into the NAITSA community, from my early days as a Service Hub Assistant and Peer Supporter, to my current role as your academic advocate.

While prioritizing academics is important, I highly encourage you to dive into campus life and make the most of your time here; it will pass by quickly! Take advantage of the opportunity to make memories and friendships that will last a lifetime.

My commitment to you remains steadfast: to foster an environment where you feel safe, at ease, heard, and empowered. As your VP Academic, I pledge to continue advocating for your needs within the NAIT community, championing policy changes, and providing non-partisan support.

Working closely with the Student Academic Rights Advisor, I will ensure your concerns find resonance at every level. Whether you seek guidance, an empathetic ear, or a companion in meetings with NAIT staff, I am here for you.

If you see me in the hallway, drop by the NAITSA office, or prefer to connect via email, don't hesitate to reach out. I'm looking forward to connecting with you and wish you all the best with your studies!

Marina Bruno  
NAITSA VP ACADEMIC



## NAITSA VP INTERNAL

Hello there! I'm Brayden Shopland, and I'm excited to be your Vice President Internal for the 2024/25 school year!

**SAVPINTERNAL@NAIT.CA**  
MAIN CAMPUS, O108 (NAITSA)

As a fourth-year Business student in Marketing, I have learned the value of fostering a community of new, different, and like-minded people around us. Over the last year with my involvement in clubs and participating in NAITSA events, I have grown to love spending my time on NAIT campus; the best thing has been meeting many incredible people. Forming new friendships has greatly contributed to my overall happiness and drive for learning, growth, and career development.

Your time at NAIT will go by quickly, especially as an actively involved student. NAITSA facilitates events and campus club organizations which are your opportunity to have some fun, meet new people, and maybe even learn a thing or two. Whether it's a trivia

night, a "how to" event, playing some board or video games, or expanding your network with professional development, you can be sure to find something you'll enjoy, and if you can't, then let's work together to create it!

My role as VP Internal is to advocate for all students with the goal to improve and maintain an inclusive, fun, and unforgettable campus experience for everyone. Whether that involves activities and events, volunteer opportunities, study and relaxation spaces, or working closely with the rest of the Executive Council team, I will always have the students' best interests in mind and at heart.

If you see me in the hallways on campus, please stop and say hi! You can always feel free to chat with me there, visit me in the NAITSA office, or send me an email at [savpinternal@nait.ca](mailto:savpinternal@nait.ca). I look forward to meeting you. Until then, enjoy your time as a NAIT student!

Brayden Shopland  
**NAITSA VP INTERNAL**



## NAITSA OPERATING BUDGET

NAITSA's expenses include standard organizational costs such as employee salaries and training/development, but we always prioritize student-focused services in our spending.

Student-focused services include health and dental coverage, the U-Pass, and events on campus. As a non-profit organization, our goal is to serve the students of NAIT. Below is a breakdown of how student fees are distributed across NAITSA's departments and student-focused services.

	REVENUE (\$)	EXPENSES (\$)	NET (\$)
General administration	4,656,640	1,719,992	2,936,648
Meetings, development, and training	-	121,479	(121,479)
Communications and engagement	-	527,986	(527,986)
Governance and awards	5,000	72,804	(67,804)
Conferences and affiliations	-	131,808	(131,808)
Discretionary funds	-	34,000	(34,000)
Food and beverage operations	942,791	1,026,923	(84,132)
Campus life activities	-	744,311	(744,311)
Publications	9,000	161,515	(152,515)
External relations	-	41,250	(41,250)
U-Pass	3,420,00	3,422,160	(2,160)
Gaming machines	1,000	750	250
Student benefits	2,457,000	2,405,648	51,352
Clubs Centre	-	494,197	(494,197)
<b>OPERATING BUDGET TOTALS</b>	<b>11,491,431</b>	<b>10,904,822</b>	<b>586,609</b>
<i>Transfer Student Benefits (surplus to)/deficit from the Student Benefits Reserve Fund</i>			(51,352)
<i>Budgeted Capital Purchases</i>			(78,000)
<i>Transfer 5% of Student Fee Revenue to the Building Fund</i>			(225,295)
<b>OPERATING BUDGET SURPLUS/(DEFICIT) IN 2024/25</b>			<b>231,962</b>

## NAITSA FEE STRUCTURE

In addition to NAIT tuition fees, NAIT students are charged a fee for their NAITSA membership, as mandated by the *Alberta Post Secondary Learning Act*.

This fee is adjusted for some students to reflect limited enrolment, as explained in the table below. Please note that this structure is specific to the fees collected on behalf of NAITSA.

For questions about tuition fees, please visit [nait.ca/ssc](http://nait.ca/ssc)

CREDIT STUDENT MEMBERSHIP FEE	2024 - 2025	NOTES
On-Campus or Hybrid Study (per semester, full-time and part-time students)	148.00	<b>D</b>
Online Study Exclusively (per credit, capped at \$148.00)	12.33	<b>E F</b>
Auditing Study (per credit)	–	<b>G</b>

APPRENTICE STUDENT MEMBERSHIP FEE*	2024 - 2025	NOTES
4 weeks	38.88	<b>H</b>
5 weeks	48.88	<b>H</b>
6 weeks	58.88	<b>H</b>
7 weeks	68.88	<b>H</b>
8 weeks	78.88	<b>H</b>
10 weeks	97.88	<b>H</b>
12 weeks	117.88	<b>H</b>

\* NAITSA fees for apprentice students are pro-rated to the per semester cap based on a 15-week term.

U-PASS FEE	2024 - 2025	NOTES
U-Pass Fee (per semester)	180.00	<b>A B D</b>

STUDENT BENEFIT FEES	2024 - 2025	NOTES
Medical (per semester)	69.00	<b>B C D</b>
Dental (per semester)	65.00	<b>B C D</b>

### NOTES

- A** Eligible to opt-out at NAITSA Office: CNIB, ETS and NAIT full-time employees, practicum students over eight weeks outside service area.
- B** The Summer and Spring term fees align with Fall and Winter respectively, but have no U-Pass or Student Benefits.
- C** Students eligible for Medical and Dental Benefits may opt-out if they submit proof of existing coverage.
- D** NAIT staff, athletes, and international exchange students pay the same fees and receive the same services as all others.
- E** Exclusively online or distance students pay approximately 75% of the full NAITSA fee.
- F** Exclusively online or distance students are NOT eligible for U-Pass.
- G** Auditing students do NOT pay any fees, and are NOT eligible for U-Pass or Student Benefits.
- H** Apprentice students are NOT eligible for U-Pass or Medical and Dental coverage due to their condensed schedule.



student  
life CAN  
\* BE \*

TOUGH.

we get it.  
WE'RE



HERE  
TO listen.



NAITSA PEER SUPPORT

Find us in J209B, Main Campus  
or online via LiveChat

[naitsa.ca/peer-support](https://naitsa.ca/peer-support)

naitsa



# HEALTH AND WELLNESS

Looking for information on your student health and dental benefits? Maybe you need mental health support or details on our PAWSS program. You'll find all that and more in this section!

**22 NAITSA HEALTH AND DENTAL BENEFITS**

Details on plan fees, coverage, opting in or out, and adding family members.

**24 MYWELLNESS**

Online mental health support and resources, including video counselling.

**25 NAITSA PEER SUPPORT**

Anonymous, confidential, free supportive listening for students, by students.

**25 NAIT STUDENT COUNSELLING**

Free, confidential sessions with a registered therapist.

**26 PAWSS PROGRAM**

Pets Assisting with Student Success at NAITSA.

**27 ATHLETICS AND RECREATION**

Recreation programs and facilities at NAIT.

**28 HEALTH, SAFETY AND ENVIRONMENT SERVICES**

First aid at Main, Patricia, and Souch campuses, injury reporting, and more.

## NAITSA HEALTH AND DENTAL BENEFITS

NAITSA provides health and dental coverage to over 8,500 students each year, and it is our duty to assist you in completing all proper documentation and answer any questions you may have. If you change programs at any time, please notify us as soon as possible to verify your coverage status.

[MYSTUDENTPLAN.CA/NAIT](https://mystudentplan.ca/nait)  
MAIN CAMPUS, O108 (NAITSA)

### Fees and Coverage Periods

If you are enrolled in a credit course that starts prior to the last Friday of September or the last Friday of January, you are automatically enrolled in the plan and assessed the fee for that term (Fall or Winter).

- Health fee: \$138.00 per academic year, charged in two payments of \$69.00.
- Dental fee: \$130.00 per academic year, charged in two payments of \$65.00.

**All credit students are assessed these fees,** including upgrading, open studies, part-time and full-time students, in an online or face-to-face delivery format.

Benefits are not available for students auditing or enrolled exclusively in non-credit, ESL, or apprenticeship courses. Benefits fees are not assessed to students enrolled in the Spring/Summer terms—to have coverage, you must be assessed in the Winter term.

### FALL TERM COVERAGE

September 1 – December 31

### WINTER TERM COVERAGE

January 1 – August 31

### Blackout Period

New eligible students will be added approximately 6-8 weeks after the start of the term. During this blackout period, keep all receipts for any eligible expenses to submit for reimbursement once the plan is active.

Check your MyNAIT portal or NAITSA's social media to find out when the plan is active.

- X (Twitter): [@naitsa](https://twitter.com/naitsa)
- Facebook: [@naitstudents](https://facebook.com/naitstudents)
- Instagram: [@naitstudents](https://instagram.com/naitstudents)

### Deadlines

Opt-out, opt-in, and family add-on forms must be submitted online at [mystudentplan.ca/nait/en/forms](https://mystudentplan.ca/nait/en/forms)

### SEPTEMBER-START DEADLINE

Friday, September 27, 2024 at 4:00pm.

### JANUARY-START DEADLINE

Friday, January 31, 2025 at 4:00pm.

**There will be no exceptions if the applicable deadline is missed.**

### Opt-Out

If you have comparable coverage\* through another insurance provider or as a dependent on your parent's or spouse's plan, you may opt out by completing the online opt-out form prior to the applicable deadline.

\* Provincial health care is not considered comparable coverage.

Students enrolled in the Fall term who miss the September deadline must wait until the following September to opt-out (no changes can be made in January). Students enrolled in the Winter term that miss the January deadline must also wait until the following September to opt-out, as changes are not accepted during the Spring/Summer terms.

**Enrolment status carries forward each year, until a student requests it be changed.** If you have opted out once in the past and come back to NAIT as an eligible student years later, your plan will still be opted out unless you opt-in before the applicable deadline.

Failure to opt out and withholding payment will cause your account to be placed on financial hold. This may prevent you from enrolling in future courses, receiving your parchment after graduation, and accessing many NAIT services.

# NAITSA HEALTH AND DENTAL BENEFITS

## SPONSORED STUDENTS

Confirm the fees that will be covered by your sponsor, as some do not cover health and dental fees. If you have comparable coverage, it is your responsibility to submit the online opt-out form before the applicable deadline.

### Opt-In

If you previously opted out and want to opt back in, you must submit the online opt-in form prior to the applicable deadline or within 30 days of your loss of alternate coverage.

### Family Add-On

If you are eligible for the plan and wish to purchase coverage for your dependent(s), you must submit the online family add-on form and pay the additional fees prior to the applicable deadline. **Family add-ons do not carry forward each year.** Submissions and payment must be made prior to the deadline each year.

- Health add-on fee:  
\$288.00/year (one or more dependents)
- Dental add-on fee  
\$265.00/year (one dependent),  
\$395.00/year (two or more dependents)

### Coverage Highlights

The following highlights are some of the included benefits, not an exhaustive list.

Coverage information is correct to the best of our knowledge at the time of publication. Refer to [mystudentplan.ca/nait](http://mystudentplan.ca/nait) for the most up-to-date information.

### PRESCRIPTION DRUGS

Reimbursed at 80%, to a maximum of \$3,000 per benefit year. Based on the National Formulary with a generic rider. Includes some vaccines.

## DENTAL COVERAGE

Diagnostic and preventative procedures reimbursed at 100% (select dentists) or 70% (alternate dentists), once per benefit year. Fillings reimbursed at 80%. Extractions reimbursed at 50%, limited to 2 wisdom teeth per benefit year. Overall plan maximum of \$750 per benefit year.

## VISION

Reimbursed at 100%, up to \$80 for eyeglasses or contact lenses once every 24 months, limited to one eye exam every 24 months.\*

\* Based on reasonable and customary charges, must be performed by a registered and licensed doctor in ophthalmology or optometry.

## PSYCHOLOGIST OR SOCIAL WORKER

Reimbursed at 80%, to a maximum of \$500 per benefit year.\*

\* Practitioners must be registered and licensed.

## PARAMEDICAL PRACTITIONERS

Reimbursed at 80%, to a maximum of \$20 per visit and an overall plan maximum of \$300 per practitioner per benefit year. Practitioners must be registered and licensed in their field of practice. Includes registered massage therapist\*, physiotherapist\*, osteopath, naturopath, chiropractor, podiatrist, chiropodist, and speech language pathologist\*.

\* Physician prescription required.

## MEDICAL EQUIPMENT & SUPPLIES

Reimbursed at 80%; pre-determination is recommended.\* Custom-made orthopedic shoes limited to \$150 per foot, per benefit year.

\* Physician prescription required.



## MENTAL HEALTH RESOURCES

No matter how busy you are, your mental health should be a priority. NAITSA is here for you with a variety of resources to help students. More resources can be found at [naitsa.ca/student-resources](https://naitsa.ca/student-resources)

### MyWellness

MyWellness provides students with access to mental health information and supports. The information and tools available through myWellness have been developed to assist students in improving and/or sustaining mental health while completing their studies.

[MYWELLNESSPLAN.CA/NAIT](https://mywellnessplan.ca/nait)

### INFORMATION AND SUPPORTS

1. Free and anonymous mental health assessment
2. InkBlot Therapy video counselling
3. Campus and community resources
4. Mental health toolbox
5. Find a doctor search tool
6. Crisis lines information

MyWellness is free for all NAIT students—as well as their family members—even if they are not eligible for the NAITSA Health and Dental Plan. MyWellness was developed with the Canadian post-secondary student in mind and focuses on the full cycle of support including awareness, education, and care.

### MENTAL HEALTH ASSESSMENT

Developed by leading mental health professionals, the 5-10 minute assessment is based on the *Diagnostics and Statistical Manual of Mental Disorders, 5th Edition* and gold standards of evidence-based practice in mental health.

The personalized action plan that comes with the assessment is developed based on the *Canadian Network for Mood and Anxiety Treatment (CANMAT) Guidelines*. The assessment systematically asks questions to determine an area of risk as well as the level of risk related to the responses provided by the user. The assessment does not aim to diagnose and does not replace the diagnosis of a professional mental health care provider. Rather, it offers a starting point to lead you in the right direction.

### INKBLOT THERAPY VIDEO COUNSELLING

Students can access Canadian mental health professionals through secure and confidential online video counselling via Inkblot Therapy. For individual counselling, students will answer a brief survey and will then have a choice of counsellors to pick from that are most suited to their needs. The Inkblot platform is easy to use and affordable. To get started, visit [inkblottherapy.com/naitsa](https://inkblottherapy.com/naitsa)

Sessions can be 30, 60, or 90 minutes. The first online counselling session to meet the counselor of your choice is free, and subsequent individual sessions are \$45.00 per 30 minutes.

The NAITSA Health and Dental Benefits Plan will cover 80% of each session with a registered psychologist or social worker—that means students only pay \$9.00 out of pocket. If you are not on the plan, your 30-minute session is still available at \$45.00.



## MENTAL HEALTH RESOURCES

### NAITSA Peer Support

Peer Support is a free, anonymous, and confidential supportive listening service, for students by students.

Peer Support aims:

- To provide an environment where students will feel safe and at ease when discussing concerns with their peers.
- To empower students while navigating through difficult situations.
- To make referrals to appropriate campus departments, community agencies, or organizations if the student requires further support or information.

**NAITSA.CA/PEER-SUPPORT**  
MAIN CAMPUS, J209B

### PEER SUPPORT HOURS

Peer Support operates during the Fall and Winter terms, both online via LiveChat and on a walk-in basis in J209B. Our hours are updated each term on our website.

Don't have time to chat or not sure what to expect? Drop by our cozy space to grab some freebies and resources. Want to talk online?

To start a chat during our operating hours, visit [naitsa.ca/peer-support](https://naitsa.ca/peer-support)

Disclaimer: Peer Supporters are not psychologists or professional counsellors, and as such, there are some limitations to the kind of service they can provide. Peer Supporters can help students develop an action plan and give referrals to other areas or services more appropriate for long term support, like counselling or professional help.

### NAIT Student Counselling

Depressed? Suicidal? So anxious you can't complete academic tasks or attend class? At risk of dropping out of school? Wishing personal difficulties weren't interfering in your studies? At your limit?

On all NAIT campuses, free and confidential personal and mental health support is available from professionals, including registered and experienced psychologists, a social worker, and a nurse.

To make an appointment, fill out our web form at [my.nait.ca/counselling](https://my.nait.ca/counselling) or visit our Main Campus location in W111PB.

We offer in-person, video, and phone appointments. If your concern is urgent, we offer walk-in consults, same- or next-day.

**MY.NAIT.CA/COUNSELLING**  
MAIN CAMPUS, W111PB

### IN CRISIS AFTER HOURS?

- Call or text 988 for the National Suicide Crisis Helpline
- [mywellnessplan.ca/nait](https://mywellnessplan.ca/nait)
- [wellnesstogether.ca](https://wellnesstogether.ca)
- [kidshelpphone.ca](https://kidshelpphone.ca): text 686868, phone 1.800.668.6868
- AHS Access 24/7: phone 780.424.2424
- Call 211 for information and referrals regarding personal concerns, like housing, food insecurity, and family supports.
- If risk is immediate, call 911 or go to the nearest emergency room.



## NAITSA'S PAWSS PROGRAM

Whether you're feeling stressed, anxious, or just need something to brighten your day, our PAWSS (Pets Assisting with Student Success)-certified animals are here to offer their support and affection – and receive your pets and attention!

**[NAITSA.CA/PAWSS](https://naitsa.ca/pawss)**

MAIN CAMPUS, O108 (NAITSA)

### ABOUT THE PAWSS PROGRAM

Pets Assisting with Student Success (PAWSS) is a not-for-profit Animal Therapy program created, developed and implemented by MacEwan University that offers unstructured animal-assisted interactions. We recognize the positive impact that animals can have on our overall wellbeing by improving mental health and reducing stress. That's why NAITSA is proud to participate in the PAWSS program!

PAWSS dogs are available on a drop-in basis during scheduled shifts. Stop by the NAITSA office any time during a PAWSS shift and request to see the PAWSS dog in the office that day.

To learn more about our PAWSS dogs and view the PAWSS schedule\*, please visit [naitsa.ca/pawss](https://naitsa.ca/pawss)

\* The PAWSS schedule is based on the availability of the handlers and always in consideration of the animals' wellbeing, therefore, is subject to change without notice.





## ATHLETICS AND RECREATION

At NAIT, learning and growth happens outside of the classroom, too! Athletics and Recreation encompasses a variety of programs, services, and facilities to help you improve and maintain your mental and physical health.

MAIN CAMPUS, E131  
[@NAITATHLETICSANDRECREATION](#)

### Recreation Facilities

NAIT has many recreation facilities available to support your well-being, including the gymnasium, arena, fitness weight centre, squash and racquetball courts, indoor running/walking track, climbing wall, and exercise studio. Through partnership with MacEwan University, students have access to the aquatics area and pool.

NAIT students who have been assessed the Recreation and Athletics Fee of \$124 (+GST) for the Fall/Winter terms as part of their tuition will have access to NAIT's recreation facilities. Students who have not been assessed the fee can pay a monthly rate of \$31/month (+GST). Fees can be paid at the NAIT OneCard office located in the CAT building or at the main access desk in the Fitness Weight Centre.

### Recreation Programs

Embark on an active living journey with NAIT Athletics and Recreation. Tailored to support all NAIT students, our diverse programs nurture both fun and fitness. Join our vibrant community; get connected and stay active.

We have a variety of recreation programs:

- Fitness Classes
- Intramurals
- Esports
- Learn-to Series
- Outdoor Events
- Fitness Challenges
- Access to MacEwan University Swimming Pool with valid OneCard (September - April)
- Active Study Spaces
- And much more!

Follow [@naitathleticsandrecreation](#) on Instagram for the latest information on the status of recreation facilities and programming information. Recreation programs will also be posted on NAITSA's [ookslife.ca](#) platform.



## HEALTH, SAFETY, AND ENVIRONMENT SERVICES

Health Services is a team of healthcare professionals and support staff that strive to provide friendly, accessible services to the NAIT community. Our goal is to provide excellence in care and to promote a safe, healthy learning and working environment.

### Services Available at Main Campus

- First aid for injuries including dressing applications, steri-strips, tensor bandages, and ice packs
- Incident reporting and Workers' Compensation Board reporting for occupational injuries that occur at NAIT or during a WIL Placement
  - Students and apprentices are covered by WCB for work-related incidents
  - All first aid and injuries must be reported to Health Services within 24 hours through an in-person assessment in Health Services (S105) or myCority reporting at [nait.my.cority.com](https://nait.my.cority.com)
  - How to report a Safety Incident (YouTube video)
- Urgent care for medical emergencies including chest pain, shortness of breath, or allergic reactions
- First Aid for Mental Health emergencies
- Vital signs assessment if feeling faint or dizzy
- Immunization record review for students in the School of Health and Life Sciences and Biological Sciences programs

Students at Patricia Campus and Souch Campus can obtain first aid treatment through first aid certified instructors and on-site NAIT Protective Services. They can also contact a Health Services Nurse by calling 780.471.8733

Please note you will have to see a physician if you require any of the following: a prescription, medical note, blood work requisition, chest x-ray requisition, or diagnosis of a medical condition.

### HOW DO I REPORT INJURIES?

If the injury or medical incident is an emergency, call 911 immediately.

If the injury or medical incident is non-life-threatening, report it to your instructor as soon as possible. Get first aid on-site (if available) or at Health Services. You should also report the incident through myCority at [nait.my.cority.com](https://nait.my.cority.com)

### HOW DO I REPORT ENVIRONMENTAL CONCERNS?

If you notice leaks, spills, material releases, or other environmental hazards, take the following steps:

- Call Protective Services (780.471.7477) if there are immediate risks to health and safety
- Notify your instructor
- Report through myCority at [nait.my.cority.com](https://nait.my.cority.com)

### Health Services

#### MAIN CAMPUS S105

Monday – Friday, 7:30am –3:30pm\*

\* Closed for lunch from 11:30am – 12:00pm  
780.471.8733

#### First Aid Locations

##### PATRICIA CAMPUS P130

Monday – Friday  
780.378.7252

##### SOUCH CAMPUS Z153F

Monday – Friday  
780.378.1043



# GET CONNECTED

Find your community at NAIT. Choose from a variety of clubs, hundreds of events, dozens of workshops and even more options to suit your needs.

**30 NAITSA'S LOOKS LIFE**

Hub for student life on campus: events, clubs, volunteering, and more.

**33 NAITSA CAMPUS CLUBS**

Find your people—expand and enhance your NAIT experience.

**34 OFFICE OF EQUITY, DIVERSITY, AND INCLUSION**

Committed to fostering diversity and inclusivity.

**35 INTERNATIONAL AND INTERCULTURAL COMMUNITY CENTRE (IIC)**

"Home away from home" for international students, open to all NAIT students looking for community.

**36 NÎSÔHKAMÂTOTÂN CENTRE**

The gathering place for Aboriginal and non-Aboriginal students to network, study, and share post-secondary learning experiences.

## OOKS LIFE

We work to create an engaging campus life experience for all students. If you want to get involved on campus, learn something new, or socialize, we have many opportunities to help you make the most of your time at NAIT!

**OOKSLIFE.CA**

MAIN CAMPUS, O108 (NAITSA)

@OOKSLIFE

The Ooks Life brand and platform is a centralized hub for NAIT students to learn about the different involvement opportunities and events across campus. Since 1964, the Ook has been NAIT's official mascot, and it has become a regular sight on campus and well-known among NAIT students—making it the perfect symbol of NAIT campus life! These days you'll be able to spot the Ook as NAIT's athletic mascot, making appearances at NAITSA events, or serving main character energy on the @ookslife social media channels!

### ARE YOU LOOKING TO MAKE THE MOST OF YOUR TIME ON CAMPUS?

**Ookslife.ca** is a great starting place to learn about the events, involvement opportunities, and other activities facilitated by NAITSA. You'll also find everything you need to know about clubs on campus and events hosted by various NAIT departments.

If you're looking for fun at NAIT, look no further than @ookslife on social media. Here you'll learn about NAITSA events, contests, and more! It's a great place to find out about

what's happening across NAIT. Find us on Facebook, Twitter, Instagram, and TikTok!

### HOW DO I SIGN IN?

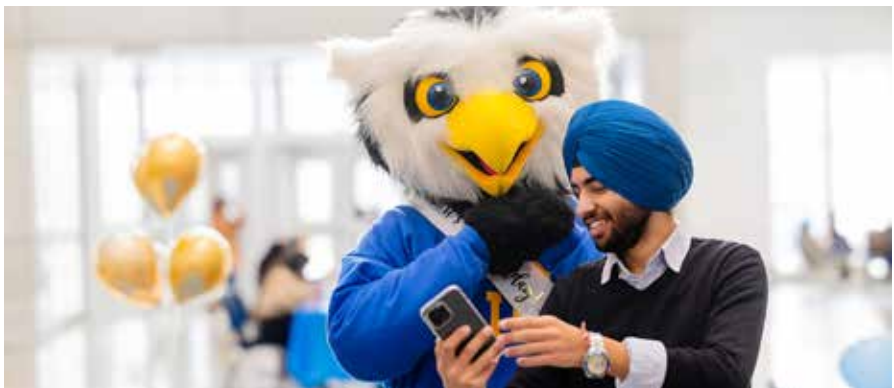
1. Visit [ookslife.ca](https://ookslife.ca)
2. Sign in using the same login credentials as your MyNAIT Portal.
3. Use the toolbar to browse Events, Organizations, and News. *Tip: the filters can help you narrow down search results!*

### Ooks Life Team

The Ooks Life Team (OLT) plays a vital role in making NAITSA's campus life the best experience possible each year. We may be biased, but it's the best gig on campus!

These all-star students help plan, promote, and execute events, coordinate volunteer opportunities, and support clubs. Our goal is to help encourage students to have fun and foster friendships while at school, and OLT helps make this possible!

Get involved on campus and make your college experience a memorable one! If you are interested in working on the Ooks Life Team during the 2025-26 school year, applications open in the Fall 2024 term—applicants will be hired in early 2025. Visit [nait.ca/jobs](https://nait.ca/jobs) for more information!



## OOKS LIFE

### Campus Events

NAITSA hosts around 180 events each year! From meditation to dirty bingo, karaoke to cooking classes, there's sure to be something that sparks your interest! NAIT departments, like The Mawji Centre for New Venture and Student Entrepreneurship, the International and Intercultural Community Centre (IIICC), NAIT Career Services, and others also use [ookslife.ca](https://ookslife.ca) as the central hub for their events.

### Event Pass

This unique QR code records your event attendance and helps you seamlessly check-in to all NAITSA and NAIT events. Add your Ooks Life Event Pass to your smartphone's wallet and gain quick entry to our events—it makes it easier for you and the event organizers!

### DOWNLOAD YOUR EVENT PASS

- Login to [ookslife.ca](https://ookslife.ca) on your mobile device.
- Click on your user icon (top right).
- From the drop-down menu click "Event Pass" and it will display your unique code.
- Add the Event Pass to your Apple Wallet or Android Pay. You can also screenshot or print your Event Pass.

### Involvement Record

Get involved on campus! Learn about the different volunteer opportunities or student experiences available to NAIT students.

Your Involvement Record within [ookslife.ca](https://ookslife.ca) will showcase your participation throughout your time at NAIT. This record can include your organization memberships, select event history, service hours, and more.

### Paths

Paths in Ooks Life will guide you through different campus experiences: getting to know NAIT as a new student, volunteering, and many others. Receiving credit for each path will be slightly different; joining organizations, attending events, and submitting self-reported experiences can all contribute to completing your path. You can win prizes, earn swag, and bolster your Involvement Record.

Visit [ookslife.ca](https://ookslife.ca) to learn more, and stay tuned for more paths in the future!

### Milestone

The Milestone platform helps students prepare for their desired careers by guiding them through identifying critical skills, building an e-portfolio, and earning badges to recognize their involvement and learning. Milestone can help you stand out from other applicants in a crowded job market! Scan the QR code at the bottom of this page to receive access to Milestone.

**IDENTIFY SKILLS. BUILD YOUR E-PORTFOLIO.  
EARN BADGES. STAND OUT.**

## JOIN MILESTONE

Milestone can help you prepare for your desired career by identifying industry expectations and skills you'll need. Impress employers with your e-portfolio, showcase your work and skills! The final piece of the puzzle? Earn digital badges from NAIT and NAITSA, and display them in your e-portfolio!

**Scan the QR code to get started.**





# YOUR OOKS LIFE STARTS HERE

**FIND YOUR FUN!**

Browse events, clubs, workshops,  
and more at [ookslife.ca](https://ookslife.ca)



**naitsa**



## NAITSA CAMPUS CLUBS

Make the most of your time at NAIT with NAITSA Campus Clubs. Clubs offer invaluable opportunities to engage with your peers, explore new social and cultural landscapes, and connect with your campus community.

### NAITSA.CA/CLUBS

MAIN CAMPUS, O108 (NAITSA)

@NAITSA CLUBS

Have questions or want to know more? Email [askclubs@nait.ca](mailto:askclubs@nait.ca) or visit us at NAITSA (O108).

### BENEFITS OF CLUB MEMBERSHIP

- **Networking, networking, networking!** Clubs are an excellent way to meet new people and create lasting connections.
- **Develop your leadership and organization skills.** Level up your soft skills by taking initiative and being involved.
- **Reduce stress and have fun outside the classroom.** Post-secondary is about more than just studying, don't forget to have fun!
- **Access funding to support your club activities.** From conferences to parties, NAITSA Campus Clubs offers financial support to achieve your club dreams.

### Types of Clubs

#### OPEN MEMBERSHIP CLUBS

**General Interest Clubs** are based on a hobby, culture, religion or other category that a group may have a shared interest in. You don't need to be a member of a specific program to join, but members might benefit from being in a related program. **Academic Interest Clubs** focus on activities related to an academic program or area. **Chapter Organizations** are the student chapter of a not-for-profit parent organization.

#### LIMITED MEMBERSHIP CLUBS

**Student Councils** are clubs with membership based on academic programs. These may be **Combined Year** (composed of first, second, third, and fourth year students) or **Fixed Year** (limited to a graduating year).

### How to Start a Club

Here's what you need to know first:

- Clubs are for all NAIT students, so no limiting membership based on age, race, religion, ability, social status, gender, or sexual orientation.
- Multiple clubs with the same purpose aren't allowed, so get creative!
- Clubs can't be created for solely using resources to complete class projects.

### STARTING YOUR CLUB

Every club starts with an executive team. You'll need at least 3 current students (including yourself) to get started: President, Vice-President Operations and Vice-President Finance. Build your team to suit your club's needs with additional members after that.

1. Sign in to [ookslife.ca](https://ookslife.ca) using the same credentials as your MyNAIT Portal.
2. Click "Organizations," then "Register New Organization." Ensure that your club executives have completed their profiles.
3. Select one of the following:
  - If you are a brand-new club, select "Register a New Organization," then "NAITSA Campus Clubs."
  - If you are a returning club, use the "Re-Register Existing" option.
4. For new clubs, you'll need to pick a name, write a description of your club, and write bylaws to guide your club.\*
  - \* Need some help? Visit the clubs microsite for a more detailed explanation.

### How to Join a Club

You can browse all active campus clubs on the Oaks Life platform!

1. Sign in to [ookslife.ca](https://ookslife.ca)
2. Click the "Organizations" tab.
3. Click "Select Branches," then "NAITSA Campus Clubs."
4. Browse active clubs and read the descriptions of any club that interests you.
5. Click "Join," wait for approval from the club executives, and you're in!

## OFFICE OF EQUITY, DIVERSITY, AND INCLUSION

NAIT is committed to providing a safe and inclusive learning and working environment for all members of our community.

**NAIT.CA/INCLUSION**  
MAIN CAMPUS, HP CENTRE W101

The Office of Equity, Diversity, and Inclusion (OEDI) provides programs, services, and resources that help students:

- Build community
- Experience a sense of belonging
- Learn about different perspectives, identities, and cultures
- Thrive in a diverse community

### HOW WE DO IT

Learning about different systems, cultures, identities, and perspectives supports students to thrive in a diverse community.

We offer events, workshops, resources and initiatives on a variety of equity, diversity and inclusion topics for staff and students.

These include:

- Gender-Based and Sexual Violence (GBSV)\* prevention, education, and supports.
- 2SLGBTQIA+ community building
- Understanding students from racialized and marginalized communities
- Creating equitable spaces on campus
- Pride Week
- Black History Month
- And much more

Visit [ooklife.ca/organization/odei](https://ooklife.ca/organization/odei) to see our upcoming events.

- For information and supports specific to GBSV, visit [nait.ca/gbsv](https://nait.ca/gbsv) or contact [gbsv@nait.ca](mailto:gbsv@nait.ca)



## INTERNATIONAL AND INTERCULTURAL COMMUNITY CENTRE (IICC)

NAIT's International and Intercultural Community Centre (IICC) is open to all students and staff at NAIT. It is the hub for international student support and community-building.

**NAIT.CA/INTERCULTURAL**  
MAIN CAMPUS, HP CENTRE W101

The IICC serves as a "home away from home" for international students and a place where all students can find community and intercultural experiences. The centre offers a cozy student lounge space where students can hang out with friends during the day.

### COMMUNITY BUILDING AND STUDENT EVENTS

The IICC hosts events, activities, and programs to support community building among international students and connect them with the broader NAIT community. Some of the events and programs include International Peer Groups, International Student Orientation, kick-off and wrap-up celebrations for each semester, birthday parties, cultural celebrations, and more!

### OUTREACH AND CONNECTION

The IICC connects students to NAIT services to support their success based on their unique needs. We also support international students in their cultural and social transition to Canada and NAIT. This is a safe space where students can find support and be connected

to the resources and services they need. We also invite service areas into the IICC for relationship-building with the community.

### INTERNATIONAL ACADEMIC ADVISING

IICC International Academic Advisors are trained immigration professionals who can answer questions about Study Permits, working permissions, settling in Canada, and inviting family to Canada.

### INTERCULTURAL LEARNING

Through workshops, resource development, and customized consultation, the IICC creates a shared understanding of how we can all create and enjoy an inclusive culture at NAIT.

### GO ABROAD OPPORTUNITIES

If you are a student that is interested in adding a global experience to your studies, NAIT has a few options for semester-long exchange and summer schools available to select programs in the JR Shaw School of Business. We are also currently working to develop shorter-term, instructor-led programs such as study tours and field schools.

For more information about Global Education opportunities, please contact [educationabroad@nait.ca](mailto:educationabroad@nait.ca)



## NÍSÔHKAMÂTOTÂN CENTRE

The NAIT Nísôhkamâtotân Centre is a community gathering place for Aboriginal and non-Aboriginal students to network, study and share their post-secondary learning experiences. It is a place where culture and tradition are welcome and encouraged.

**NAIT.CA/NISOHKAMATOTAN**  
MAIN CAMPUS, E121

### OFFICE HOURS

Monday – Friday, 8:00am – 4:30pm

\* Closed Fridays for lunch, 12:00pm – 1:15pm

The Centre is an integral part of the overall NAIT community and is committed to ensuring Aboriginal student success both inside and outside of the classroom. We encourage you to drop by anytime during office hours and experience the warm, welcoming environment the Nísôhkamâtotân Centre has to offer!

The Nísôhkamâtotân Centre staff are here to support Aboriginal students throughout their time at NAIT. We also provide programming to the NAIT community that educates around Aboriginal history and experiences and celebrates the richness of Aboriginal culture. We look forward to connecting this year at the centre, by phone, email, or through our programming!

For all the latest at the Centre, visit [ookslife.ca/organization/nisohkamatotan](https://www.naitsa.ca/organization/nisohkamatotan) and keep an eye on your MyNAIT Student Portal (Clubs, Groups and Community).



# CAMPUS NEWS

Get your NAIT news in print, online, and on the radio.

## 38 THE NUGGET

Your student newspaper, publishing 10 print issues a year, with even more content available online. Staffed by students and always looking for contributors!

[thenuggetonline.com](https://thenuggetonline.com)

X (Twitter): @thenaitnugget

## NAIT NEWSWATCH

NAIT campus broadcasting, staffed by students in the Radio and Television program.

[naitnewswatch.ca](https://naitnewswatch.ca)

X (Twitter): @naitnewswatch

## NR92 RADIO

NAIT campus radio, staffed by students in the Radio and Television program.

[nr92.com](https://nr92.com)

X (Twitter): @NR92



## THE NAIT NUGGET

The NAIT Nugget is the news you need on campus. Created by students, the Nugget keeps you up to date on all things NAIT. Pick up a copy on stands across campus or read more online.

**THENUGGETONLINE.COM**  
MAIN CAMPUS, O105  
**@THENAITNUGGET**

We cover things like:

- Stories from successful students, alumni, and industry experts
- NAIT sports, athlete interviews, and game recaps
- News that impacts students like tuition updates, policy changes, or academic opportunities
- NAIT exclusive deals and giveaways
- Tips and tricks to make school life easier (like getting a job or sprucing up your resume)
- Events and programs available to NAIT students
- Advice and opinions from other NAIT students

Want to develop your portfolio, meet new people, and get paid to write, draw, record, or create? The Nugget is always looking for student contributors—no experience required. Our editors will help you every step of the way. Write articles, take photos, interview experts, or create art, all on your schedule! You could:

- write about local issues that impact you
- share your opinion on changes happening at NAIT
- draw illustrations, comics, or the cover of the print issue
- film events, sports games, video essays
- record a podcast with NAIT students and staff
- and so much more!

To get involved or learn more, follow us on social media [@thenaitnugget](#), visit our website [thenuggetonline.com](http://thenuggetonline.com), or email Amy St. Amand, Editor-in-Chief, at [astamand@nait.ca](mailto:astamand@nait.ca)





# FOOD ON CAMPUS

Grab some food to fuel your success. From grabbing drinks after class with your friends to a quick bite in between studying, there are plenty of food options on campus to keep you going!

## 41 NEST EATERY

Your campus bar and restaurant, since 1988. Check out our awesome weekly specials!

[nestatnait.ca](http://nestatnait.ca)

## MICROWAVES

Packed a lunch, but need some heat? NAITSA provides and maintains over 100 microwaves across NAIT campuses. Find one close to you: [naitsa.ca/microwaves](http://naitsa.ca/microwaves)

## ARTISANAL FOOD MARKET

Offering freshly prepared and packaged meat, poultry, fish, and cheese, baked goods, and more—all from alumni and current students.

Main Campus, O120

## EAT@NAIT

Common Market (O124)  
Fresh Express (U122)  
Bytes (NAIT HP Centre)  
Embers (Y118)  
Plates (P126C)  
Elements (Z153)  
The Corner Store (CAT172D)

Full list at [nait.ca/eat-at-nait](http://nait.ca/eat-at-nait)

## ERNEST'S DINING ROOM

Outstanding contemporary cuisine, elegant service and reasonable prices, staffed by NAIT students.

[nait.ca/ernests](http://nait.ca/ernests)

# NEST EATERY

# WEEKLY SPECIALS

## FOOD

**\$12.50**

All specials available while quantities last.

### MONDAY

#### Chipotle Lime Chicken Tacos

Chipotle spiced chicken breast, Canadian cheddar and mozzarella, green leaf lettuce, and fresh salsa in two grilled flour tortillas

### TUESDAY

#### Signature Naan-zas

Campus Quad, Oh Canada, Zesty Veggie, Polynesian, BBQ Chicken, Three Little Pigs, Deluxe, or Mexi

### WEDNESDAY

#### Nest of Wings

Smoky BBQ, Sweet Garlic Sesame, Spicy Buffalo, Salt & Pepper, or Cajun

**Add creamy ranch +1.50**

**Add side of seasonal fresh vegetables +3.95**

### THURSDAY

#### Perogy Poutine

Crispy fried potato & cheddar cheese dumplings topped with Canadian cheese curds and savoury gravy

**Add bacon +2.95**

**Add fried buttermilk onions +2.95**

### THURSDAY EVENT

**SPECIAL AVAILABLE AFTER 3PM**

#### Savoury Salt & Pepper Ribslets

Fall off the bone pork ribs with your choice of dipping sauce

**Add side of seasonal fresh vegetables +3.95**

### FRIDAY

#### Daily soup and 1/2 Wrap

Ask server for details

## DRINKS

**\$5.50**

All liquor served is 1 oz. Valid ID required.

Please drink responsibly.

### MONDAY

#### Lamb's Rum Highball

White, Dark, Spiced

#### Burt Reynolds Shots

### TUESDAY

#### Flavoured Absolut

#### Vodka Highball

Strawberry, Lime, Vanilla, Peach, Mandrin, Citrus, Raspberri

#### Rock Star Shots

### WEDNESDAY

#### Wiser's Whiskey Highball

Deluxe, Apple, Old Fashioned

#### Glass Wine (6 oz) or Cooler

Ask server for details

### THURSDAY

#### Hellions Lager

Light, balanced, and crushable tall boys

#### Apple Pie Shots

### FRIDAY

#### Domestic Bottle

Budweiser, Bud Light, Pilsner, Canadian, Kokanee, Michelob Ultra

#### Superman Shots



## NEST EATERY

Serving NAIT since 1988, the Nest Eatery is the best spot on campus to make friends, memories, and enjoy great food and drinks.

**NESTATNAIT.CA**  
MAIN CAMPUS, S110  
@NESTATNAIT

At the Nest Eatery, we take pride in providing exceptional service, mouth-watering food and a fully stocked bar. Recognized for eight consecutive years as the Best Campus Bar in Edmonton by the AGLC Best Bar None, we strive to exceed industry standards, setting the bar high for excellence and responsibility.

### ORDER ONLINE FOR PICK-UP

Stomach rumbling, but not enough time between classes to sit down? We've got you covered—the Nest offers online ordering for pick-up! Visit [nestatnait.ca](https://nestatnait.ca) to view our menu and make your next order.

### HEALTH AND SAFETY

At the Nest Eatery, your health and safety is our highest priority. Did you know we go above and beyond industry standards?

Our team members are trained in food safety practices and we strictly follow the First In First Out (FIFO) method to guarantee the freshest ingredients in every dish we serve. We continue to implement virus prevention protocols, regularly monitor air quality, and maintain strict cleanliness standards throughout the Nest.

### NEST IS GOING GREEN

At the Nest Eatery, we are committed to reducing our environmental footprint while still serving up delicious meals. Join us in our journey towards sustainability!

- **Straws by Request:** We're minimizing waste by only providing straws on request.
- **Recycling and Organic Waste:** We are sorting and recycling diligently to ensure that as little as possible ends up in landfills. Our organic waste is sorted and composted.
- **Biodegradable Takeout:** Our takeout containers and utensils are made from biodegradable materials: bamboo utensils, reusable bamboo bags, and paper products.





Nimbus

natsa



# LEARN, GROW, ACCOMPLISH YOUR GOALS

**Download the Nimbus Learning app!\***

Nimbus Learning is a mobile learning platform provider that allows easy booking, communication, and scheduling between tutors and students.

\*Available on Google Play and the App Store

# ACADEMIC RESOURCES

Take advantage of these student resources to help you in your academic journey.

**44 NAITSA'S STUDENT ACADEMIC RIGHTS ADVISOR (SARA)**

Exists to educate students on and protect their academic rights and responsibilities.

**45 STUDENT CONDUCT AND COMMUNITY CONFLICT**

The Student Resolution Office is the primary resource for anything related to your rights and your responsibilities as a student.

**46 NIMBUS TUTORING**

A mobile learning platform provider that allows easy booking, communication, and scheduling between tutors and students. Brought to you by NAITSA.

**46 NAIT ADVISING**

Details on career, international, and learning advising—brought to you by NAIT.

**47 LEARNING SERVICES**

Disability and learning supports to ensure every student has a shot at success.

**48 LIBRARY SERVICES**

Details on bookable spaces, computer commons, study spaces, a designated makerspace, and more.

## NAITSA'S STUDENT ACADEMIC RIGHTS ADVISOR (SARA)

Make sure your voice is heard. NAITSA's Student Academic Rights Advisor (SARA), available year-round, offers free confidential support and guidance to students facing academic barriers.

**NAITSA.CA/SARA**

MAIN CAMPUS, O108 (NAITSA)

You don't need to face academic challenges alone. NAITSA's SARA is here to help you understand your academic rights and responsibilities. Well-versed in NAIT's academic policies, SARA promotes fairness and empowers students to make informed decisions about their academic journey.

### HOW CAN SARA SUPPORT ME?

From being accused of cheating to academic conflict with instructors, SARA will listen to each unique situation and provide guidance, support, and next steps.

NAITSA's SARA can:

- Act as a confidential, non-partisan support to students seeking guidance regarding academic challenges
- Explain relevant policies, procedures and practices
- Refer students to other NAIT departments, services or community resources as necessary
- Attend review meetings or hearings at the students' request
- Discuss potential outcomes, informing students of all possible impacts

### WHAT CAN SARA SUPPORT ME WITH?

There are numerous situations that SARA can support you with. The most frequent examples are:

- You were accused of cheating or plagiarizing on an assignment or exam
- You are experiencing academic conflicts with instructors or in your program
- You are facing extenuating circumstances that are impacting your ability to continue as a student

### WILL THERE BE CONSEQUENCES TO MEETING WITH SARA?

NAITSA's SARA is a confidential resource. The details of your situation will not be shared with anyone, unless you request and expressly authorize disclosure. Any potential outcomes will be discussed with you in advance, so you can choose how you want to handle the situation and fully understand the possible impacts of each decision.





## STUDENT CONDUCT AND COMMUNITY CONFLICT

The Student Conduct & Conflict Resolution Office is responsible for the administration of the Student Rights and Responsibility policy and related procedures. Our focus is maintaining a safe and respectful learning environment at NAIT.

Our office addresses student conduct concerns and provides members of the NAIT community with guidance and support with conflict. This includes helping students resolve conflict, addressing concerns when a student may have violated their responsibilities, and coordinating behaviour intervention when there is a worry about a student's wellbeing.

### YOUR RIGHTS AND RESPONSIBILITIES

NAIT is committed to providing a learning environment that supports respect and safety within our community. Every student has the right to an inclusive learning environment that embraces NAIT's values. These rights come with responsibilities to ensure that everyone is treated in a way that aligns with NAIT values. It is important to know your rights and your responsibilities to abide by and uphold these values in our community.

In understanding how student conduct concerns and conflicts are addressed, NAIT's policies will be a helpful starting point. You can find the Student Rights and Responsibilities policy and related procedures in your MyNAIT portal or on NAIT's website which outlines NAIT Policies and Procedures.

The NAITSA Student Academic Rights Advisor works closely with Student Conduct & Conflict Resolution to assist with any student conduct and conflict issues.

### WHAT DOES A MEETING LOOK LIKE?

When the meeting is regarding student conduct concerns, a Student Conduct & Conflict Resolution Officer will introduce themselves and let you know what to expect from the meeting and about the policy that guides their work. Student Conduct & Conflict Resolution works with a restorative justice framework, and most meetings are framed around three main questions:

- What has happened?
- What is the harm caused by what has happened?
- What would repair that harm for you and/or reduce the risk of future harm?

A Student Conduct & Conflict Resolution Officer will then go over the options available to proceed.

### CONTACT

- If you believe a student is not upholding their responsibilities/is violating your rights.
- For support in resolving conflict with another student.
  - For example: with conflict in group projects or student clubs, or for support with having a difficult conversation.
- To understand your options if you have a concern about how another NAIT student has treated you.

Please email [resolutions@nait.ca](mailto:resolutions@nait.ca) to request an appointment.



## TUTORING AND ADVISING

### Nimbus Learning

Nimbus Learning is a mobile learning platform that allows easy booking, communication and scheduling between tutors and students.

Through the Nimbus Learning app, students can search for the course they need tutoring in, see available tutors, and then filter by price, rating, or language.

Students wishing to tutor can also apply online at [nait.ca/tutor](https://nait.ca/tutor)

Our tutors are vetted by Nimbus Learning and must receive at least 75% in the subject they wish to tutor. As a tutor, you can gain valuable tutoring experience, choose your hourly pay rate, and choose your own availability. Learn more at [nait.ca/tutor](https://nait.ca/tutor)

NAITSA also offers free drop-in tutoring sessions for credit and apprenticeship students. For details on upcoming sessions, visit [ookslife.ca](https://ookslife.ca) and type "Nimbus" into the search bar.

For technical support, please email [support@nimbuslearning.com](mailto:support@nimbuslearning.com)

**NAITSA.CA/NIMBUS**  
NIMBUS APP AVAILABLE ON  
GOOGLE PLAY AND THE APP STORE

### NAIT Advising

[NAIT.CA/ADVISING](https://nait.ca/advising)

#### CAREER ADVISING

NAIT career-focused academic advisors help students navigate their education and connect their learning to their overarching employment and career goals. Book an appointment to discuss your education or career plan, academic concerns, job search, resume or LinkedIn review, or mock interview. Explore resources and NAIT's student job board at [nait.ca/careerconnect](https://nait.ca/careerconnect)

#### INTERNATIONAL ADVISING

Our trained immigration advisors can answer study and work permit questions, assist with getting settled, and bringing family to Canada. If you have a quick question for an international advisor, submit it at [nait.ca/help](https://nait.ca/help). If your question is complex or requires further exploration, book an appointment with us.

#### LEARNING ADVISING

Is there something that stops you from learning or showing what you have learned? One of our advisors can help! We will work with you to identify learning barriers and find resources to support your learning. If you are a student with a disability, connect with a Learning Advisor to determine the accessibility resources that will work for you.



## LEARNING SERVICES

Learning Services offers service plans for students with barriers to learning, access to learning strategies, and resources to support you in your education. Let's talk about what you need to succeed!

[NAIT.CA/LEARNINGSERVICES](https://nait.ca/learningservices)

### Disability Services

Students with a diagnosed disability or a suspected learning disability or barrier can benefit from our services. We work with you to create a service plan to support your learning which may include:

- Alternate format course materials
- Assistive and adaptive technology
- Exam accommodations
- Sign language interpreters and captioning services
- Learning strategies appointments
- Note-taking services and/or
- Reduced course load

Visit [nait.ca/learningservices](https://nait.ca/learningservices) to book an appointment with a Learning Advisor or drop in to E105 to discuss your options.

### ASSISTIVE TECHNOLOGIES

NAIT students can access a variety of software, technology, and apps. Students with accommodations can discuss how to access any specialized software and inventory of equipment by booking an appointment with their Learning Advisor. Explore assistive equipment and technologies to support their studies in our Assistive Technology Centre located in A130.

### Learning Supports

Learning Services offers a variety of free online resources and services to support your learning.

### LEARNING MODULES

Access our self-paced online learning modules for math, writing, and study skills.

### LEARNING STRATEGIES

Learning Strategies provides resources and support to help you develop and maintain effective study skills and habits. We provide strategies to improve:

- memory and learning
- focus and concentration
- time management and organization
- exam preparation and writing

### STUDENT STUDY GROUP PROGRAM

Peer study groups are a powerful learning tool. This program will help you create and run a peer study group along with providing on-going access to resources and support. Visit [nait.ca/studygroups](https://nait.ca/studygroups) for more information and to join today!

### Connect with Learning Services on Microsoft Teams

Access additional resources, stay up to date with workshop and event offerings, and chat with our support staff. For a direct link to our Teams site, visit [nait.ca/learningservices](https://nait.ca/learningservices)



## LIBRARY SERVICES

Library Services offers the spaces, resources, and services to support your success at NAIT. With group and individual study spaces, technology and equipment for creating innovative projects, resources for your assignments, and plenty of help available, there is something for everyone.

**LIBRARY.NAIT.CA**  
MAIN CAMPUS, U310

Visit the Library (U310) in-person or online and get help by phone, chat, or text. For more information on the following services, visit [library.nait.ca](http://library.nait.ca)

### Services and Support

#### PRINTING & PROJECT FINISHING

The Library provides full-service printing and project finishing options, including report binding, portfolio printing, large-format scanning, and photo printing.

#### SUBJECT LIBRARIAN

Each school has a designated Subject Librarian who provides research and citation help. You can book an appointment (in-person or virtual) or come to the Library during drop in hours to work with a Subject Librarian.

#### WRITING CENTRE (U213)

Develop your academic writing skills with free writing support offered through in-person or virtual appointments, drop-in tutoring, and other services.

### Study and Work Spaces

#### BOOKABLE SPACES

Book a Collaboration Room, an AV Sound Editing Booth, or a Solo Study Booth.

#### COMPUTER COMMONS

U210 Study Lounge, U310 Library, W203 NAITSA Computer Commons & CAT215 CAT Computer Commons are equipped with computers, printers, copiers, and scanners.

#### STUDY SPACES

Individual and group study spaces are available in all library areas, including the computer commons. The U210 Study Lounge has a dedicated Quiet Zone for individual study, in addition to study spaces.

### Technology

#### LOANABLE EQUIPMENT

Borrow laptops, cameras, calculators, and more from Library. Equipment can be reserved in advance.

#### MAKERSPACE

Featuring 3D printers, vinyl cutters, robotic kits, CNC milling machines, Virtual Reality headsets, an electronic workbench, a laser engraver, and more, Makerspace welcomes you to experiment with new ideas and technologies.



# STUDENT SUPPORTS

Ensuring the success of every student, no matter their income. In this section you'll find financial resources, as well as details on NAITSA's Emergency Food Centre.

**50 K.O.F.E**

Knowledge of Financial Education: an online resource to help build financial wellness. Brought to you by NAITSA.

**50 NAIT SCHOLARSHIPS AND BURSARIES**

NAIT supports over 4,000 students with over \$6 million in scholarships and bursaries each year.

**50 NAITSA'S ESTL**

Emergency Short Term Loans for unforeseen financial emergencies.

**50 NAIT FINANCIAL AID**

NAIT provides assistance to students applying for federal and provincial financial aid.

**51 NAITSA EMERGENCY FOOD CENTRE**

Emergency food hampers for students in need.

## FINANCIAL RESOURCES

### Knowledge of Financial Education (K.O.F.E.)

Struggling with budgeting, or not sure where to start on your financial wellness journey?

K.O.F.E. provides information on how to budget, what to understand about your credit score, and so much more!

[MYWELLNESSPLAN.CA/NAIT](http://MYWELLNESSPLAN.CA/NAIT)

### NAIT Scholarships and Bursaries

NAIT supports over 4,000 students by awarding over \$6 million in scholarships and bursaries each year. NAIT's Scholarship and Bursary system will:

- determine if you meet the minimum criteria to apply for scholarships and/or bursaries
- determine the application periods for those scholarships and/or bursaries

[NAIT.CA/SCHOLARSHIPS](http://NAIT.CA/SCHOLARSHIPS)

### Emergency Short-Term Loans (ESTL)

Eligible credit students facing unexpected financial emergencies may qualify for a short-term loan from NAITSA.

**The ESTL program is for unforeseen financial emergencies; therefore, we cannot lend for planned expenses like rent or utilities.** We cannot lend towards

NAIT tuition, fees, textbooks or other foreseen school related expenses. For more information, please visit the NAITSA Service Hub (O108) or email [estl@nait.ca](mailto:estl@nait.ca)

[NAITSA.CA/ESTL](http://NAITSA.CA/ESTL)

MAIN CAMPUS, O108 (NAITSA)

### NAIT Financial Aid

In Alberta, student loans are referred to as Student Aid. Eligible students attending designated post-secondary programs can apply for student aid and grants to help pay for tuition, fees, and the cost of living. Once applications open, students can apply even before receiving program acceptance. On your application, use the NAIT school code:

**Federal:** BVAI

*Out-of-province students, please use this on your government funding application.*

**Provincial:** 2221

*Alberta students, please use this on your government funding application.*





## NAITSA EMERGENCY FOOD CENTRE

Hunger should not be a barrier to education. The NAITSA Emergency Food Centre is here to support students in need.

**NAITSA.CA/FOOD-CENTRE**  
MAIN CAMPUS, O108 (NAITSA)

Eligible students can request an emergency food hamper once a month from the NAITSA Emergency Food Centre. Each emergency food hamper aims to provide students with six days' worth of non-perishable foods. Students who need a larger quantity of food and/or perishable items can use our website to find a Food Bank near them. If a one-time referral is needed, we will gladly assist with that.

### HOW TO REQUEST AN EMERGENCY FOOD HAMPER

1. Visit [naitsa.ca/food-centre](https://naitsa.ca/food-centre)
2. Click on the "Request an Emergency Food Hamper" button and submit the form.
3. Eligible students will be notified to pick up their hampers at the NAITSA office located in O108.
4. Please remember to bring reusable bags to transport your hamper items.
5. Remember to show your OneCard upon hamper pickup.

### DONATE TO THE NAITSA FOOD CENTRE

In the 2023-2024 academic year, thanks to the NAIT community's generous donations, the NAITSA Emergency Food Centre gave out over **765 emergency food hampers** and 32 holiday hampers to students in need.

If you wish to make a physical donation, please stop by the NAITSA office (O108). All donations must be non-perishable, undamaged, and not expired. We also gratefully accept monetary donations in person at our office or through our website: [naitsa.ca/food-centre](https://naitsa.ca/food-centre)

**Psst! Are you part of a club and want to earn GIVER points for your club, while helping other students? Ask NAITSA Campus Clubs how to hold a food drive through your club!**

### IN-DEMAND ITEMS

- Canned vegetables
- Canned fruits
- Canned meat
- Instant oatmeal
- Peanut butter
- Instant noodles
- Pasta or rice

Since we launched the NAITSA Emergency Food Centre in 2014, we have handed out over 3663 hampers to NAITSA members in need. We have grown exponentially in the last few years! This year, to keep things fresh, we wanted to share some additional food for thought. Please visit [naitsa.ca/food-centre](https://naitsa.ca/food-centre) for meal planning resources and recipes!





Follow us on social media!



@naitooks

## NAIT OOKS HOME OPENERS

### SOCCER

September 14th -  
W: 12:00 PM M: 2:00 PM

### VOLLEYBALL

November 1st -  
W: 6:00 PM M: 8:00 PM

### BASKETBALL

October 25th -  
W: 6:00 PM M: 8:00 PM

### HOCKEY

October 12th - W - 6:00 PM  
October 26th - M - 6:00 PM



**FREE ADMISSION FOR NAIT STUDENTS!  
VISIT [WWW.NAITOOKS.COM](http://WWW.NAITOOKS.COM) FOR MORE  
INFORMATION AND A DETAILED SEASON SCHEDULE**

GROW YOUR CAREER. JOIN STUDENT GOVERNMENT.



# NAITSA SENATE ELECTION 2024/2025

## DISCUSS AND MAKE DECISIONS ON BIG PICTURE ISSUES THAT CONCERN NAIT STUDENTS

- 12 student representatives, representing 5 electoral zones
- 10 meetings throughout the school year
- Dinner provided at each meeting
- Honorarium up to \$700
- Leadership experience
- Your position will be recognized on your co-curricular transcripts

## INTERESTED IN BECOMING A SENATE MEMBER?

Nominations open: August 27 – September 25

Nominations close: September 25 at 4pm

For more information, visit [naitsa.ca/elections](https://naitsa.ca/elections)

**naitsa**

# SEPTEMBER

SUNDAY

MONDAY

TUESDAY

WEDNESDAY

01

02

03

04

LABOUR DAY  
NAITSA CLOSED

PANCAKE BREAKFAST

PANCAKE BREAKFAST

08

09

10

11

15

16

17

18

BACK TO SCHOOL BRAIN FREEZE

22

23

24

25

SENATE NOMINATIONS CLOSE

29

30

NATIONAL DAY FOR TRUTH  
AND RECONCILIATION

**AUGUST**

**OCTOBER**

28	29	30	31	01	02	03	29	30	01	02	03	04	05
04	05	06	07	08	09	10	06	07	08	09	10	11	12
11	12	13	14	15	16	17	13	14	15	16	17	18	19
18	19	20	21	22	23	24	20	21	22	23	24	25	26
25	26	27	28	29	30	31	27	28	29	30	31	01	02

**THURSDAY**

**FRIDAY**

**SATURDAY**

<b>05</b>	<b>06</b>	<b>07</b>	
<b>12</b>  <small>NEST FEST</small>	<b>13</b>  <small>NEST FEST</small>	<b>14</b>	
<b>19</b>	<b>20</b>	<b>21</b>  <small>EDMONTON ELKS CAMPUS CLASH</small>	
<b>26</b>	<b>27</b>  <small>U-PASS EXEMPTION, HEALTH AND DENTAL PLAN OPT-IN/OPT-OUT/ FAMILY ADD-ON DEADLINES</small>	<b>28</b>	



MONDAY

02

LABOUR DAY NAITSA CLOSED

SENATE ELECTION NOMINATIONS ARE OPEN

TUESDAY

03

PANCAKE BREAKFAST

WEDNESDAY

04

PANCAKE BREAKFAST

NAITSA

# SENATE ELECTION

2024/2025

NOMINATIONS OPEN AUGUST 27 - SEPTEMBER 25  
VISIT [ELECTIONS.NAITSA.CA](https://elections.naitsa.ca)



THURSDAY

05

FRIDAY

06

SATURDAY

07

SUNDAY

08

NOTES

MONDAY

09

TUESDAY

10

WEDNESDAY

11

naitsa

# NEST FEST

SEPTEMBER 12+13 | CAT QUAD | FREE

Don't miss out on the best back-to-school party - for more info visit [ookslife.ca](http://ookslife.ca)



THURSDAY

12

NEST FEST AT CAT QUAD

FRIDAY

13

NEST FEST AT CAT QUAD

SATURDAY

14

SUNDAY

15

NOTES

MONDAY

16

TUESDAY

17

WEDNESDAY

18

BACK TO SCHOOL BRAIN FREEZE



#1 EDMONTON CAMPUS BAR  
EIGHT YEARS RUNNING  
[NESTATNAIT.CA](http://NESTATNAIT.CA)



THURSDAY

19

FRIDAY

20

SATURDAY

21

SUNDAY

22

EDMONTON ELKS CAMPUS CLASH

NOTES

MONDAY  
**23**

TUESDAY  
**24**

WEDNESDAY  
**25**

SENATE ELECTION NOMINATIONS CLOSE AT 4PM

**HEALTH AND DENTAL PLAN  
OPT-IN/OPT-OUT/FAMILY ADD-ON  
DEADLINES THIS FRIDAY**

**VISIT [NAITSA.CA/HEALTH-AND-DENTAL](http://NAITSA.CA/HEALTH-AND-DENTAL) FOR MORE INFORMATION**



**psst.**



THURSDAY

26

FRIDAY

27

U-PASS EXEMPTION, HEALTH AND DENTAL PLAN OPT-IN/OPT-OUT/FAMILY ADD-ON DEADLINES

SATURDAY

28

SUNDAY

29

NOTES



SEPTEMBER

01 02 03 04 05 06 07  
 08 09 10 11 12 13 14  
 15 16 17 18 19 20 21  
 22 23 24 25 26 27 28  
 29 30 01 02 03 04 05

NOVEMBER

27 28 29 30 31 01 02  
 03 04 05 06 07 08 09  
 10 11 12 13 14 15 16  
 17 18 19 20 21 22 23  
 24 25 26 27 28 29 30

THURSDAY

FRIDAY

SATURDAY

<p><b>03</b></p> <p>PRIDE WEEK</p>	<p><b>04</b></p> <p>PRIDE WEEK</p>	<p><b>05</b></p>	<hr/> <hr/> <hr/> <hr/> <hr/> <hr/> <hr/> <hr/>
<p><b>10</b></p>	<p><b>11</b></p>	<p><b>12</b></p>	<hr/> <hr/> <hr/> <hr/> <hr/> <hr/> <hr/> <hr/>
<p><b>17</b></p>	<p><b>18</b></p>	<p><b>19</b></p>	<hr/> <hr/> <hr/> <hr/> <hr/> <hr/> <hr/> <hr/>
<p><b>24</b></p>	<p><b>25</b></p>	<p><b>26</b></p>	<hr/> <hr/> <hr/> <hr/> <hr/> <hr/> <hr/> <hr/>
<p><b>31</b></p> <p>HALLOWEEN</p>			<hr/> <hr/> <hr/> <hr/> <hr/> <hr/> <hr/> <hr/>

MONDAY  
**30**

NATIONAL DAY FOR TRUTH AND RECONCILIATION

TUESDAY  
**01**

PRIDE WEEK

WEDNESDAY  
**02**

PRIDE WEEK



EMERALD  
PROPERTIES

## PREMIUM RENTAL PROPERTIES

Providing exceptional off-campus accommodations in Edmonton, featuring comfortable townhomes and apartment-style units in fantastic neighborhoods close to campus!

 (780)996-5158

 [www.live-emerald.com](http://www.live-emerald.com)  [request@live-emerald.com](mailto:request@live-emerald.com)



THURSDAY

03

PRIDE WEEK

FRIDAY

04

PRIDE WEEK

SATURDAY

05

SUNDAY

06

NOTES

MONDAY

07

TUESDAY

08

WEDNESDAY

09





THURSDAY

10

OCTOBER

FRIDAY

11

SENATE ELECTION VOTING BEGINS

SATURDAY

12

SUNDAY

13

NOTES

MONDAY

14

THANKSGIVING NAITSA CLOSED

TUESDAY

15

WEDNESDAY

16

VOLUNTEER FAIR

NAITSA

# SENATE ELECTION

2024/2025

ONLINE VOTING OPEN OCTOBER 11-17  
VISIT [ELECTIONS.NAITSA.CA](https://elections.nait.ca)

THURSDAY

17

VOLUNTEER FAIR

SENATE ELECTION VOTING ENDS

FRIDAY

18

SATURDAY

19

SUNDAY

20

NOTES

MONDAY  
21

TUESDAY  
22

WEDNESDAY  
23



#1 EDMONTON CAMPUS BAR  
EIGHT YEARS RUNNING  
[NESTATNAIT.CA](http://NESTATNAIT.CA)



THURSDAY

24

OCTOBER

FRIDAY

25

SATURDAY

26

SUNDAY

27

NOTES

MONDAY  
28

TUESDAY  
29

WEDNESDAY  
30



Start a chat at [naitsa.ca/peer-support](https://naitsa.ca/peer-support)

**naitsa**



THURSDAY

31

OCTOBER

HALLOWEEN

FRIDAY

01

SATURDAY

02

SUNDAY

03

NOTES

# NOVEMBER

SUNDAY

MONDAY

TUESDAY

WEDNESDAY

03

04

05

06

NAITSA CLUBS SHOWCASE

NAITSA CLUBS SHOWCASE

10

11

12

13

REMEMBRANCE DAY  
NAITSA CLOSED

FALL BREAK  
NAITSA CLOSED

17

18

19

20

24

25

26

27

OCTOBER

DECEMBER

29	30	01	02	03	04	05	01	02	03	04	05	06	07
06	07	08	09	10	11	12	08	09	10	11	12	13	14
13	14	15	16	17	18	19	15	16	17	18	19	20	21
20	21	22	23	24	25	26	22	23	24	25	26	27	28
27	28	29	30	31	01	02	29	30	31	01	02	03	04

THURSDAY

FRIDAY

SATURDAY

	01	02	
07	08	09	
	FALL BREAK NAITSA CLOSED		
14	15	16	
17	18	19	
28	28	30	

MONDAY

04

TUESDAY

05

NAITSA CLUBS SHOWCASE

WEDNESDAY

06

NAITSA CLUBS SHOWCASE



# GET CONNECTED

## GET INVOLVED ON CAMPUS

CLUBS | EVENTS | VOLUNTEER OPPORTUNITIES  
VISIT [NAITSA.CA/CLUBS](https://naitsa.ca/clubs) FOR MORE INFO

THURSDAY

07

FRIDAY

08

FALL BREAK NAITSA CLOSED

SATURDAY

09

SUNDAY

10

NOTES

MONDAY

11

REMEMBRANCE DAY NAITSA CLOSED

TUESDAY

12

FALL BREAK NAITSA CLOSED

WEDNESDAY

13

# TAKE YOUR LEARNING TO NEW HEIGHTS

Need extra help with your classes?  
Download the Nimbus Learning app!\*

*\*Available on Google Play and the App Store*

Visit [naitsa.ca/nimbus](http://naitsa.ca/nimbus) for more information.





THURSDAY

14

FRIDAY

15

SATURDAY

16

SUNDAY

17

NOTES

MONDAY

18

TUESDAY

19

WEDNESDAY

20



#1 EDMONTON CAMPUS BAR  
EIGHT YEARS RUNNING  
[NESTATNAIT.CA](http://NESTATNAIT.CA)



THURSDAY

21

FRIDAY

22

SATURDAY

23

SUNDAY

24

NOTES

MONDAY  
25

TUESDAY  
26

WEDNESDAY  
27



THE NAITSA FOOD CENTRE IS  
LOOKING FOR DONATIONS!

Visit [naitsa.ca/food-centre](http://naitsa.ca/food-centre) for more info.

**naitsa**

THURSDAY

28

FRIDAY

29

SATURDAY

30

SUNDAY

01

NOTES

# DECEMBER

SUNDAY

MONDAY

TUESDAY

WEDNESDAY

01

02

03

04

08

09

10

11

15

16

17

18

22

23

24

25

WINTER BREAK  
NAITSA CLOSED

CHRISTMAS EVE  
NAITSA CLOSED

CHRISTMAS DAY  
NAITSA CLOSED

29

30

31

WINTER BREAK  
NAITSA CLOSED

NEW YEAR'S EVE  
NAITSA CLOSED

**NOVEMBER**

**JANUARY**

27	28	29	30	31	01	02	29	30	31	01	02	03	04
03	04	05	06	07	08	09	05	06	07	08	09	10	11
10	11	12	13	14	15	16	12	13	14	15	16	17	18
17	18	19	20	21	22	23	19	20	21	22	23	24	25
24	25	26	27	28	29	30	26	27	28	29	30	31	01

**THURSDAY**

**FRIDAY**

**SATURDAY**

<b>05</b>	<b>06</b>	<b>07</b>	
<b>12</b>	<b>13</b>	<b>14</b>	
<b>19</b>  <small>WINTER BREAK NAITSA CLOSED</small>	<b>20</b>  <small>WINTER BREAK NAITSA CLOSED</small>	<b>21</b>	
<b>26</b>  <small>BOXING DAY NAITSA CLOSED</small>	<b>27</b>  <small>WINTER BREAK NAITSA CLOSED</small>	<b>28</b>	



MONDAY

02

TUESDAY

03

WEDNESDAY

04



EMERALD  
PROPERTIES

## PREMIUM RENTAL PROPERTIES

Providing exceptional off-campus accommodations in Edmonton, featuring comfortable townhomes and apartment-style units in fantastic neighborhoods close to campus!

(780)996-5158

[www.live-emerald.com](http://www.live-emerald.com) [request@live-emerald.com](mailto:request@live-emerald.com)



THURSDAY

05

FRIDAY

06

SATURDAY

07

SUNDAY

08

NOTES



THURSDAY

12

FRIDAY

13

SATURDAY

14

SUNDAY

15

NOTES

MONDAY

16

TUESDAY

17

WEDNESDAY

18



Start a chat at [naitsa.ca/peer-support](https://naitsa.ca/peer-support)

**naitsa**

THURSDAY

19

WINTER BREAK NAITSA CLOSED

FRIDAY

20

WINTER BREAK NAITSA CLOSED

SATURDAY

21

SUNDAY

22

NOTES

MONDAY

23

WINTER BREAK NAITSA CLOSED

TUESDAY

24

CHRISTMAS EVE NAITSA CLOSED

WEDNESDAY

25

CHRISTMAS DAY NAITSA CLOSED



**GET CONNECTED**  
GET INVOLVED ON CAMPUS

CLUBS | EVENTS | VOLUNTEER OPPORTUNITIES  
VISIT [NAITSA.CA/CLUBS](https://naitsa.ca/clubs) FOR MORE INFO

THURSDAY

26

BOXING DAY NAITSA CLOSED

FRIDAY

27

WINTER BREAK NAITSA CLOSED

SATURDAY

28

SUNDAY

29

NOTES



# My next step to career success.

Keep your career momentum going with courses and programs in business, health, skilled trades, energy and environment, and digital literacy!

Explore your options today at [nait.ca/ConEd](http://nait.ca/ConEd)



CORPORATE &  
CONTINUING  
EDUCATION



GROW YOUR CAREER. JOIN STUDENT GOVERNMENT.



# NAITSA EXECUTIVE COUNCIL

2025/2026

**THE NAITSA EXECUTIVE COUNCIL IS COMPRISED OF 4 STUDENT REPRESENTATIVES AT NAIT:**

- The President
- Vice President Academic
- Vice President External
- Vice President Internal

**INTERESTED IN BECOMING A CANDIDATE?**

Nominations open: January 2 – January 27

Nominations close: January 27 at 4pm

For more information, visit [naitsa.ca/elections](https://naitsa.ca/elections)

**naitsa**



DECEMBER

FEBRUARY

01	02	03	04	05	06	07	26	27	28	29	30	31	01
08	09	10	11	12	13	14	02	03	04	05	06	07	08
15	16	17	18	19	20	21	09	10	11	12	13	14	15
22	23	24	25	26	27	28	16	17	18	19	20	21	22
29	30	31	01	02	03	04	23	24	25	26	27	28	01

THURSDAY

FRIDAY

SATURDAY

<p><b>02</b></p> <p>EXECUTIVE COUNCIL NOMINATIONS OPEN</p>	<p><b>03</b></p>	<p><b>04</b></p>	
<p><b>09</b></p>	<p><b>10</b></p>	<p><b>11</b></p>	
<p><b>16</b></p>	<p><b>17</b></p> <p>OOKS BIRTHDAY BASH</p>	<p><b>18</b></p>	
<p><b>23</b></p>	<p><b>24</b></p>	<p><b>25</b></p> <p>JASPER IN JANUARY</p>	
<p><b>30</b></p>	<p><b>31</b></p> <p>SPLASH AND BASH U-PASS EXEMPTION, HEALTH AND DENTAL PLAN OPT-IN/OPT-OUT/ FAMILY ADD-ON DEADLINES</p>		

MONDAY

30

WINTER BREAK NAITSA CLOSED

TUESDAY

31

NEW YEAR'S EVE NAITSA CLOSED

WEDNESDAY

01

NEW YEAR'S DAY NAITSA CLOSED

**NAITSA**

# **EXECUTIVE COUNCIL**

**ELECTION 2025/2026**

**NOMINATIONS OPEN JANUARY 2 - 27**  
**VISIT [ELECTIONS.NAITSA.CA](https://elections.naitsa.ca)**

THURSDAY  
**02**

EXECUTIVE COUNCIL ELECTION NOMINATIONS OPEN

FRIDAY  
**03**

SATURDAY  
**04**

SUNDAY  
**05**

NOTES

MONDAY  
06

TUESDAY  
07

WEDNESDAY  
08

BACK TO SCHOOL BRAIN FREEZE



#1 EDMONTON CAMPUS BAR  
EIGHT YEARS RUNNING  
[NESTATNAIT.CA](http://NESTATNAIT.CA)



THURSDAY

09

FRIDAY

10

SATURDAY

11

SUNDAY

12

NOTES





THURSDAY

16

FRIDAY

17

OOKS BIRTHDAY BASH

SATURDAY

18

SUNDAY

19

NOTES

MONDAY  
20

TUESDAY  
21

WEDNESDAY  
22



Start a chat at [naitsa.ca/peer-support](https://naitsa.ca/peer-support)

**naitsa**

THURSDAY

23

FRIDAY

24

SATURDAY

25

SUNDAY

26

NOTES

MONDAY

27

EXECUTIVE COUNCIL ELECTION NOMINATIONS CLOSE

TUESDAY

28

WEDNESDAY

29

**HEALTH AND DENTAL PLAN  
OPT-IN/OPT-OUT/FAMILY ADD-ON  
DEADLINES THIS FRIDAY**

**VISIT [NAITSA.CA/HEALTH-AND-DENTAL](http://NAITSA.CA/HEALTH-AND-DENTAL) FOR MORE INFORMATION**



**psst.**

**THURSDAY**  
**30**

**FRIDAY**  
**31**

SPLASH AND BASH  
U-PASS EXEMPTION, HEALTH AND DENTAL PLAN OPT-OUT/OPT-IN/FAMILY ADD-ON DEADLINES

**SATURDAY**  
**01**

**SUNDAY**  
**02**

**NOTES**

# FEBRUARY

SUNDAY

MONDAY

TUESDAY

WEDNESDAY

02

03

04

05

09

10

11

12

NAITSA CLUBS SHOWCASE

16

17

FAMILY DAY  
NAITSA CLOSED

18

READING WEEK

19

READING WEEK

23

24

25

26

JANUARY

29 30 31 01 02 03 04  
 05 06 07 08 09 10 11  
 12 13 14 15 16 17 18  
 19 20 21 22 23 24 25  
 26 27 28 29 30 31 01

MARCH

23 24 25 26 27 28 01  
 02 03 04 05 06 07 08  
 09 10 11 12 13 14 15  
 16 17 18 19 20 21 22  
 23/30 24/31 01 02 03 04 05

THURSDAY

FRIDAY

SATURDAY

		01	
06	07  EXECUTIVE COUNCIL ELECTION VOTING BEGINS	08	
13  EXECUTIVE COUNCIL ELECTION VOTING ENDS	14  VALENTINE'S DAY	15	
20  READING WEEK	21  READING WEEK	22	
27	28		



MONDAY

03

TUESDAY

04

WEDNESDAY

05



EMERALD  
PROPERTIES

## PREMIUM RENTAL PROPERTIES

Providing exceptional off-campus accommodations in Edmonton, featuring comfortable townhomes and apartment-style units in fantastic neighborhoods close to campus!

(780)996-5158

[www.live-emerald.com](http://www.live-emerald.com) [request@live-emerald.com](mailto:request@live-emerald.com)



THURSDAY

06

FRIDAY

07

EXECUTIVE COUNCIL ELECTION VOTING BEGINS

SATURDAY

08

SUNDAY

09

NOTES

MONDAY

10

TUESDAY

11

WEDNESDAY

12

**NAITSA**

# **EXECUTIVE COUNCIL**

**ELECTION 2025/2026**

**ONLINE VOTING OPEN FEBRUARY 7-13  
VISIT [ELECTIONS.NAITSA.CA](https://elections.nait.ca)**

THURSDAY

13

EXECUTIVE COUNCIL ELECTION VOTING ENDS

FRIDAY

14

SATURDAY

15

SUNDAY

16

NOTES

MONDAY

17

FAMILY DAY NAITSA CLOSED

TUESDAY

18

READING WEEK

WEDNESDAY

19

READING WEEK

# TAKE YOUR LEARNING TO NEW HEIGHTS

Need extra help with your classes?  
Download the Nimbus Learning app!\*

*\*Available on Google Play and the App Store*

Visit [naitsa.ca/nimbus](http://naitsa.ca/nimbus) for more information.



Nimbus

THURSDAY  
**20**

READING WEEK

FRIDAY  
**21**

READING WEEK

SATURDAY  
**22**

SUNDAY  
**23**

NOTES

MONDAY  
24

TUESDAY  
25

WEDNESDAY  
26



#1 EDMONTON CAMPUS BAR  
EIGHT YEARS RUNNING  
[NESTATNAIT.CA](http://NESTATNAIT.CA)



THURSDAY  
**27**

FRIDAY  
**28**

SATURDAY  
**01**

SUNDAY  
**02**

NOTES



# MARCH

SUNDAY

MONDAY

TUESDAY

WEDNESDAY

SUNDAY	MONDAY	TUESDAY	WEDNESDAY
02	03  PRIDE WEEK	04  PRIDE WEEK	05  PRIDE WEEK
09	10	11	12
16	17  ST. PATRICK'S DAY	18	19
23	24	25	26
30	31		

FEBRUARY

26 27 28 29 30 31 01  
 02 03 04 05 06 07 08  
 09 10 11 12 13 14 15  
 16 17 18 19 20 21 22  
 23 24 25 26 27 28 01

APRIL

30 31 01 02 03 04 05  
 06 07 08 09 10 11 12  
 13 14 15 16 17 18 19  
 20 21 22 23 24 25 26  
 27 28 29 30 01 02 03

THURSDAY

FRIDAY

SATURDAY

		01	
06	07	08	
PRIDE WEEK	PRIDE WEEK		
13	14	15	
20	21	22	
27	28	29	

MONDAY  
03

PRIDE WEEK

TUESDAY  
04

PRIDE WEEK

WEDNESDAY  
05

PRIDE WEEK



THURSDAY

06

PRIDE WEEK

FRIDAY

07

PRIDE WEEK

SATURDAY

08

SUNDAY

09

NOTES



Start a chat at [naita.ca/peer-support](https://naita.ca/peer-support)



THURSDAY

13

FRIDAY

14

SATURDAY

15

SUNDAY

16

NOTES

MONDAY

17

ST. PATRICK'S DAY

TUESDAY

18

WEDNESDAY

19



**GET CONNECTED**  
GET INVOLVED ON CAMPUS

CLUBS | EVENTS | VOLUNTEER OPPORTUNITIES  
VISIT [NAITSA.CA/CLUBS](http://NAITSA.CA/CLUBS) FOR MORE INFO

THURSDAY  
**20**

FRIDAY  
**21**

SATURDAY  
**22**

SUNDAY  
**23**

NOTES



MONDAY  
24

TUESDAY  
25

WEDNESDAY  
26



#1 EDMONTON CAMPUS BAR  
EIGHT YEARS RUNNING  
[NESTATNAIT.CA](http://NESTATNAIT.CA)



THURSDAY  
**27**

FRIDAY  
**28**

SATURDAY  
**29**

SUNDAY  
**30**

NOTES

# APRIL

SUNDAY

MONDAY

TUESDAY

WEDNESDAY

		01	02
06	07	08	09
13	14	15	16
20	21 EASTER MONDAY NAITSA CLOSED	22	23
27	28	29	30

MARCH

23 24 25 26 27 28 01  
 02 03 04 05 06 07 08  
 09 10 11 12 13 14 15  
 16 17 18 19 20 21 22  
 23/30 24/31 01 02 03 04 05

MAY

27 28 29 30 01 02 03  
 04 05 06 07 08 09 10  
 11 12 13 14 15 16 17  
 18 19 20 21 22 23 24  
 25 26 27 28 29 30 31

THURSDAY

FRIDAY

SATURDAY

03

04

05

10

11

12

17

18

19

GOOD FRIDAY  
 NAITSA CLOSED

24

25

26



EMERALD  
PROPERTIES

## PREMIUM RENTAL PROPERTIES

Providing exceptional off-campus accommodations in Edmonton, featuring comfortable townhomes and apartment-style units in fantastic neighborhoods close to campus!

(780)996-5158

[www.live-emerald.com](http://www.live-emerald.com) [request@live-emerald.com](mailto:request@live-emerald.com)



NOTES

MONDAY  
07

TUESDAY  
08

WEDNESDAY  
09



THURSDAY

10

APRIL

FRIDAY

11

SATURDAY

12

SUNDAY

13

NOTES



MONDAY

14

TUESDAY

15

WEDNESDAY

16



**GET CONNECTED**  
GET INVOLVED ON CAMPUS

CLUBS | EVENTS | VOLUNTEER OPPORTUNITIES  
VISIT [NAITSA.CA/CLUBS](http://NAITSA.CA/CLUBS) FOR MORE INFO

THURSDAY

17

APRIL

FRIDAY

18

GOOD FRIDAY NAITSA CLOSED

SATURDAY

19

SUNDAY

20

NOTES

MONDAY  
21

EASTER MONDAY NAITSA CLOSED

TUESDAY  
22

WEDNESDAY  
23



Start a chat at [naitsa.ca/peer-support](https://naitsa.ca/peer-support)

**naitsa**

THURSDAY  
**24**

FRIDAY  
**25**

SATURDAY  
**26**

SUNDAY  
**27**

NOTES

# MAY

SUNDAY

MONDAY

TUESDAY

WEDNESDAY

04

05

06

07

11

12

13

14

MOTHER'S DAY

18

19

20

21

VICTORIA DAY  
NAITSA CLOSED

25

26

27

28

APRIL

JUNE

30	31	01	02	03	04	05	01	02	03	04	05	06	07
06	07	08	09	10	11	12	08	09	10	11	12	13	14
13	14	15	16	17	18	19	15	16	17	18	19	20	21
20	21	22	23	24	25	26	22	23	24	25	26	27	28
27	28	29	30	01	02	03	29	30	01	02	03	04	05

THURSDAY

FRIDAY

SATURDAY

<b>01</b>	<b>02</b>	<b>03</b>	
<b>08</b>	<b>09</b>	<b>10</b>	
<b>15</b>	<b>16</b>	<b>17</b>	
<b>22</b>	<b>23</b>	<b>24</b>	
<b>29</b>	<b>30</b>	<b>31</b>	

NAITSA CLOSED

MONDAY  
28

TUESDAY  
29

WEDNESDAY  
30



#1 EDMONTON CAMPUS BAR  
EIGHT YEARS RUNNING  
[NESTATNAIT.CA](http://NESTATNAIT.CA)



NOTES





THURSDAY

08

MAY

FRIDAY

09

SATURDAY

10

SUNDAY

11

MOTHER'S DAY

NOTES



Start a chat at [naitsa.ca/peer-support](https://naitsa.ca/peer-support)



NOTES

MONDAY

19

VICTORIA DAY NAITSA CLOSED

TUESDAY

20

WEDNESDAY

21



# GET CONNECTED

## GET INVOLVED ON CAMPUS

CLUBS | EVENTS | VOLUNTEER OPPORTUNITIES  
VISIT [NAITSA.CA/CLUBS](http://NAITSA.CA/CLUBS) FOR MORE INFO

THURSDAY

22

MAY

FRIDAY

23

SATURDAY

24

SUNDAY

25

NOTES



#1 EDMONTON CAMPUS BAR  
EIGHT YEARS RUNNING  
[NESTATNAIT.CA](http://NESTATNAIT.CA)



NAITSA CLOSED

NOTES



# JUNE

SUNDAY

MONDAY

TUESDAY

WEDNESDAY

01

02

03

04

08

09

10

11

15

16

17

18

FATHER'S DAY

22

23

24

25

29

30

MAY

27	28	29	30	01	02	03
04	05	06	07	08	09	10
11	12	13	14	15	16	17
18	19	20	21	22	23	24
25	26	27	28	29	30	31

JULY

29	30	01	02	03	04	05
06	07	08	09	10	11	12
13	14	15	16	17	18	19
20	21	22	23	24	25	26
27	28	29	30	31	01	02

THURSDAY

FRIDAY

SATURDAY

<b>05</b>	<b>06</b>	<b>07</b>	
<b>12</b>	<b>13</b>  <small>NAITSA CLOSED</small>	<b>14</b>	
<b>19</b>	<b>20</b>	<b>21</b>	
<b>26</b>	<b>27</b>  <small>NAITSA CLOSED</small>	<b>28</b>	



EMERALD  
PROPERTIES

## PREMIUM RENTAL PROPERTIES

Providing exceptional off-campus accommodations in Edmonton, featuring comfortable townhomes and apartment-style units in fantastic neighborhoods close to campus!

(780)996-5158

[www.live-emerald.com](http://www.live-emerald.com) [request@live-emerald.com](mailto:request@live-emerald.com)



NOTES

MONDAY  
09

TUESDAY  
10

WEDNESDAY  
11



#1 EDMONTON CAMPUS BAR  
EIGHT YEARS RUNNING  
[NESTATNAIT.CA](http://NESTATNAIT.CA)



THURSDAY

12

FRIDAY

13

NAITSA CLOSED

SATURDAY

14

SUNDAY

15

FATHER'S DAY

NOTES



NOTES



# TAKE YOUR LEARNING TO NEW HEIGHTS

Need extra help with your classes?  
Download the Nimbus Learning app!\*

*\*Available on Google Play and the App Store*

Visit [naita.ca/nimbus](http://naita.ca/nimbus) for more information.



Nimbus

THURSDAY

26

FRIDAY

27

NAITSA CLOSED

SATURDAY

28

SUNDAY

29

NOTES



JUNE

01 02 03 04 05 06 07  
 08 09 10 11 12 13 14  
 15 16 17 18 19 20 21  
 22 23 24 25 26 27 28  
 29 30 01 02 03 04 05

AUGUST

27 28 29 30 31 01 02  
 03 04 05 06 07 08 09  
 10 11 12 13 14 15 16  
 17 18 19 20 21 22 23  
 24 25 26 27 28 29 30

THURSDAY

FRIDAY

SATURDAY

03	04	05	
10	11	12	
17	18	19	
24	25	26	
31			



EMERALD  
PROPERTIES

## PREMIUM RENTAL PROPERTIES

Providing exceptional off-campus accommodations in Edmonton, featuring comfortable townhomes and apartment-style units in fantastic neighborhoods close to campus!

(780)996-5158

[www.live-emerald.com](http://www.live-emerald.com) [request@live-emerald.com](mailto:request@live-emerald.com)



THURSDAY

03

JULY

FRIDAY

04

SATURDAY

05

SUNDAY

06

NOTES



**GET CONNECTED**  
GET INVOLVED ON CAMPUS

CLUBS | EVENTS | VOLUNTEER OPPORTUNITIES  
VISIT [NAITSA.CA/CLUBS](http://NAITSA.CA/CLUBS) FOR MORE INFO

THURSDAY

10

JULY

FRIDAY

11

SATURDAY

12

SUNDAY

13

NOTES





Start a chat at [naitsa.ca/peer-support](https://naitsa.ca/peer-support)



THURSDAY  
**17**

FRIDAY  
**18**

SATURDAY  
**19**

SUNDAY  
**20**

NOTES



#1 EDMONTON CAMPUS BAR  
EIGHT YEARS RUNNING  
[NESTATNAIT.CA](http://NESTATNAIT.CA)



NOTES



NOTES

# AUGUST

SUNDAY

MONDAY

TUESDAY

WEDNESDAY

SUNDAY	MONDAY	TUESDAY	WEDNESDAY
03	04  <small>CIVIC HOLIDAY NAITSA CLOSED</small>	05	06
10	11	12	13
17	18	19	20
24	25	26	27
31			

**JULY**

29 30 01 02 03 04 05  
 06 07 08 09 10 11 12  
 13 14 15 16 17 18 19  
 20 21 22 23 24 25 26  
 27 28 29 30 31 01 02

**SEPTEMBER**

31 01 02 03 04 05 06  
 07 08 09 10 11 12 13  
 14 15 16 17 18 19 20  
 21 22 23 24 25 26 27  
 28 29 30 01 02 03 04

**THURSDAY**

**FRIDAY**

**SATURDAY**

	<b>01</b>	<b>02</b>	
<b>07</b>	<b>08</b>	<b>09</b>	
<b>14</b>	<b>15</b>	<b>16</b>	
<b>21</b>	<b>22</b>	<b>23</b>	
<b>28</b>	<b>29</b>	<b>30</b>	



MONDAY

04

CIVIC HOLIDAY NAITSA CLOSED

TUESDAY

05

WEDNESDAY

06



EMERALD  
PROPERTIES

## PREMIUM RENTAL PROPERTIES

Providing exceptional off-campus accommodations in Edmonton, featuring comfortable townhomes and apartment-style units in fantastic neighborhoods close to campus!

 (780)996-5158

 [www.live-emerald.com](http://www.live-emerald.com)  [request@live-emerald.com](mailto:request@live-emerald.com)



THURSDAY

07

AUGUST

FRIDAY

08

SATURDAY

09

SUNDAY

10

NOTES



Start a chat at [naitsa.ca/peer-support](https://naitsa.ca/peer-support)



THURSDAY

14

AUGUST

FRIDAY

15

SATURDAY

16

SUNDAY

17

NOTES

# TAKE YOUR LEARNING TO NEW HEIGHTS

Need extra help with your classes?  
Download the Nimbus Learning app!\*

*\*Available on Google Play and the App Store*

Visit [naita.ca/nimbus](http://naita.ca/nimbus) for more information.



THURSDAY

21

AUGUST

FRIDAY

22

SATURDAY

23

SUNDAY

24

NOTES

MONDAY  
25

TUESDAY  
26

WEDNESDAY  
27



**GET CONNECTED**  
GET INVOLVED ON CAMPUS

CLUBS | EVENTS | VOLUNTEER OPPORTUNITIES  
VISIT [NAITSA.CA/CLUBS](http://NAITSA.CA/CLUBS) FOR MORE INFO

THURSDAY

28

AUGUST

FRIDAY

29

SATURDAY

30

SUNDAY

31

NOTES





# NOBODY SHOULD GO HUNGRY.

---

The NAITSA Emergency Food Centre provides food hampers to students in need on a monthly basis. Visit [naitsa.ca/food-centre](https://naitsa.ca/food-centre) for more information.

*If you'd like to support the NAITSA Emergency Food Centre, drop off your non-perishable and non-expired foods at NAITSA (O108), or send an Interact transfer to [accounts@naitsa.ca](mailto:accounts@naitsa.ca)*

**naitsa**

AUPE

## We're here for you.

Welcome to NAIT and your journey to an education and a better future.

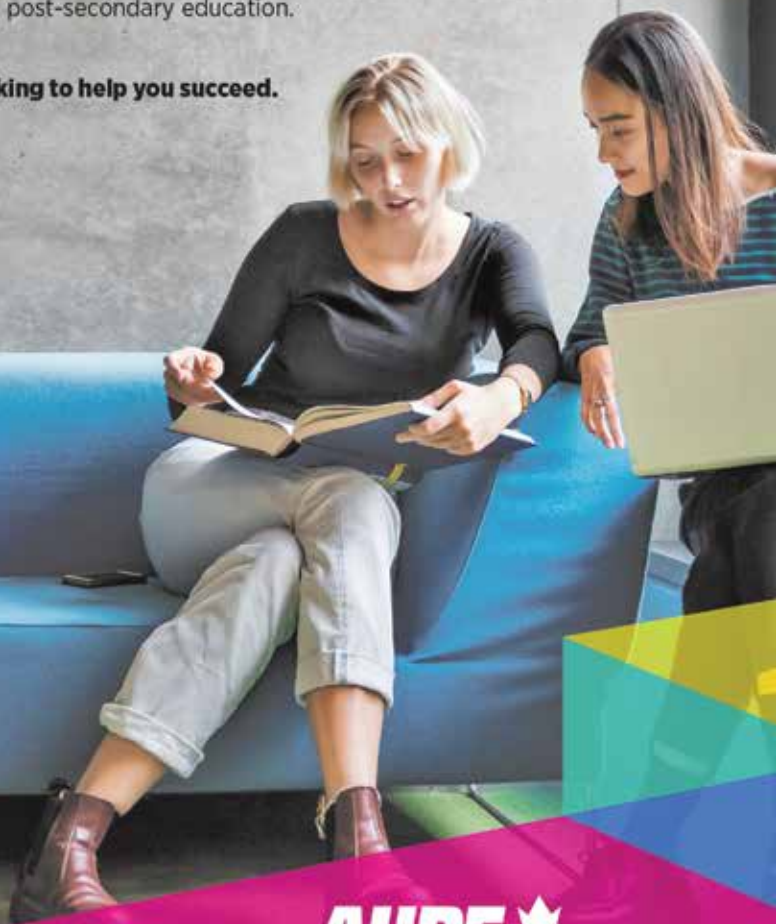
We're here to help you succeed.

As you walk around campus, and as you work from home, you'll find members of the Alberta Union of Provincial Employees (AUPE) everywhere – maintaining the technology you need to learn, keeping the buildings and equipment safe, helping you navigate through administrative hurdles and in many other ways.

Every day, we fight for:

- Affordable post-secondary education.
- Properly funded post-secondary education.

**AUPE: We're working to help you succeed.**



**AUPE** 

[www.aupe.org](http://www.aupe.org) • [facebook.com/yourAUPE](https://facebook.com/yourAUPE) • [Twitter/Instagram: @\\_AUPE](https://twitter.com/_AUPE)



THE ASSOCIATION OF SCIENCE  
AND ENGINEERING TECHNOLOGY  
PROFESSIONALS OF ALBERTA

## ENGINEERING TECHNOLOGY STUDENTS!

### Are you seeking guidance and support as you start your career?

Join ASET as a **student member** to help you  
grow in your field with access to resources like:

- mentorship and connection with experienced professionals;
- the members-only ASET Career Centre; and
- scholarships.



Scan this QR code or  
visit [aset.ab.ca/student](http://aset.ab.ca/student)  
to apply for your **FREE**  
membership today!



## Turning jobs into careers



For more information visit our websites:

[streamflo.com/careers](http://streamflo.com/careers) & [masterflo.com/en/careers](http://masterflo.com/en/careers)





**MacEwan**  
UNIVERSITY

SCHOOL OF CONTINUING  
EDUCATION

Learning doesn't  
stop after graduation.  
Enhance your career with

# CONTINUING EDUCATION.



View the  
program guide,  
[MacEwan.ca/SCE](http://MacEwan.ca/SCE)



**NEW YORK INSTITUTE  
OF TECHNOLOGY**

Vancouver

## CULTIVATING SKILLED LEADERS

MASTER'S DEGREE IN CYBERSECURITY,  
ENERGY MANAGEMENT, AND BUSINESS  
ADMINISTRATION (MBA)



**START NOW**  
IN VANCOUVER, CANADA  
[VANCOUVER.NYIT.EDU](http://VANCOUVER.NYIT.EDU)

+1.604.639.0942 // [VANCOUVERINFO@NYIT.EDU](mailto:VANCOUVERINFO@NYIT.EDU)





# 25% OFF REGULAR MENU PRICE PIZZAS!

Enter promo code:

**NAIT25**

at the start of each  
pizza in your order.

**PAPAJOHNS.CA**

**PAPAJOHNS**  
Better Ingredients. Better Pizza.

Restrictions apply. Valid at participating  
Edmonton locations. Expires June 30, 2025



## RIGHT BY YOU

### WE'RE HIRING

- Agriculture Equipment Technicians
  - Heavy Equipment Technicians
  - Parts Technicians
- PLUS MANY MORE!**



**ROCKYMTN.COM/CAREERS**



**In Pursuit of**  
the next generation  
of aspiring leaders



Join Bird's National Campus program, where you will be part of a collaborative team, experience meaningful, and challenging work opportunities, and expand your professional network in a supportive learning environment!

Learn more at our National Campus program at [www.bird.ca/careers/campus](http://www.bird.ca/careers/campus)



Creating a Sustainable Modern World with Innovative Automation

**SPARTAN CONTROLS**

Experience Industrial Innovation

[www.spartancontrols.com](http://www.spartancontrols.com)

Scan QR code to visit Spartan's CAREER page



Career Club at the Aurum Group  
wants you to know

**Our People Make the  
Difference**

Visit us at...



**THE AURUM GROUP**

[careernewsroom@aurumgroup.com](mailto:careernewsroom@aurumgroup.com)

**Build Your  
Future  
With Us**



**TRANSMOUNTAIN**

[transmountain.com/careers](http://transmountain.com/careers)



# DISCOVER YOUR POTENTIAL AT CENOVUS



We know today's students are Cenovus's future experts and leaders.

If you're a student or recent graduate looking to join a dynamic, technology-driven and sustainably-focused company to broaden and apply your skills, we have a fantastic range of opportunities for you.

Follow us to be the first to know about our positions.



**cenovus**  
ENERGY

	MONDAY	TUESDAY	WEDNESDAY	THURSDAY	FRIDAY
8:00AM					
8:30AM					
9:00AM					
9:30AM					
10:00AM					
10:30AM					
11:00AM					
11:30AM					
12:00PM					
12:30PM					
1:00PM					
1:30PM					
2:00PM					
2:30PM					
3:00PM					
3:30PM					
4:00PM					
4:30PM					
5:00PM					
5:30PM					
6:00PM					



# NEW STUDENT EXPERIENCE

**Navigating your first year at NAIT can be tough.** To help you make the most of your first year, NAITSA has created the New Student Experience (NSE). This self-led program was designed to help you sample a little bit of everything NAIT has to offer and have a chance to win some cool prizes along the way! The NSE will help you navigate over 2,000 campus opportunities to create a custom campus life experience, just for you!

Complete the New Student Experience to receive:

- a limited-edition NAITSA swag item
- a digital badge to showcase on your Milestone e-portfolio
- Inclusion on your [lookslife.ca](https://www.nait.ca/lookslife) Involvement Record
- a chance to win great monthly prizes

**Now it's time to start making the most of your time at NAIT!**



**Orientation**  
*1 experience required*



**Personal & Professional Development**  
*1 experience required*



**Social**  
*2 experiences required*



**Equity, Diversity & Inclusion**  
*1 experience required*



**Wellness**  
*2 experiences required*



**Campus Tour**  
*10 location visits required*



**Environmental Sustainability**  
*1 experience required*



**Volunteer**  
*2 hours of service required*



**Reflections**  
*2 experiences required*



**Career Planning**  
*1 experience required*



**NAIT Spirit**  
*1 experience required*



**Bonus Experiences**  
*5 optional bonus activities*

	MONDAY	TUESDAY	WEDNESDAY	THURSDAY	FRIDAY
8:00AM					
8:30AM					
9:00AM					
9:30AM					
10:00AM					
10:30AM					
11:00AM					
11:30AM					
12:00PM					
12:30PM					
1:00PM					
1:30PM					
2:00PM					
2:30PM					
3:00PM					
3:30PM					
4:00PM					
4:30PM					
5:00PM					
5:30PM					
6:00PM					

WINTER TERM

JANUARY – APRIL 2025

# SCORE WITH OILERS TREATS

## WIN OILERS TICKETS

### Snag two tickets to an upcoming Edmonton Oilers game!

When you order any of the Nest featured menu items during the promo weeks, you'll automatically be entered into a draw for the chance to win.

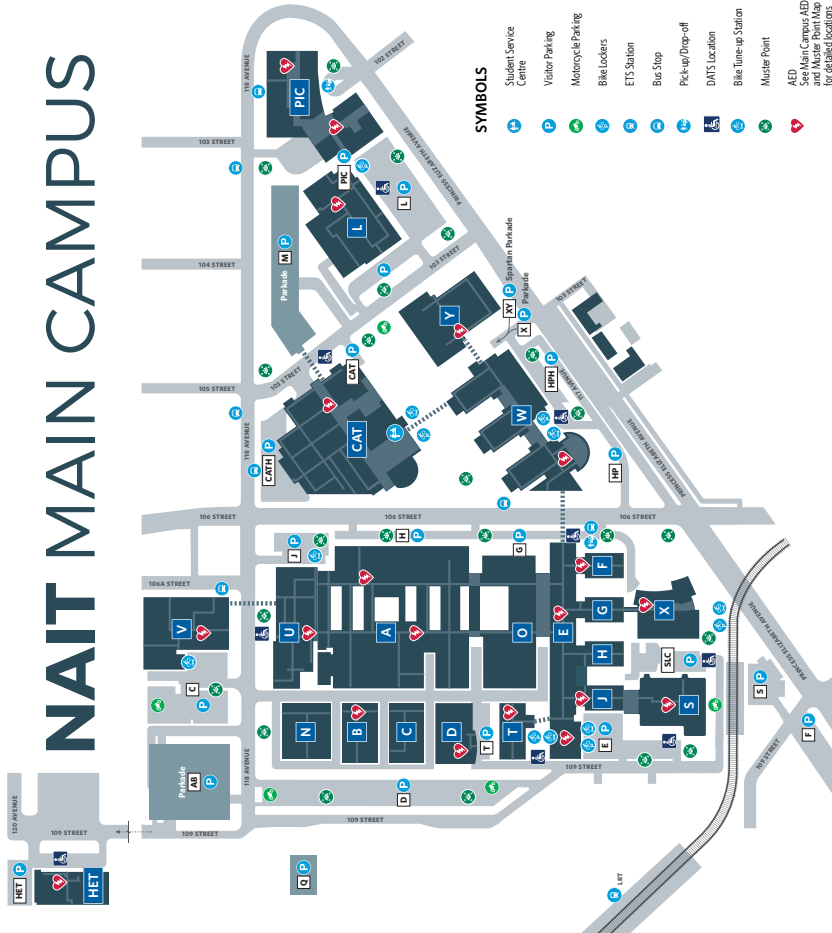
Raffle drawings will take place shortly after the end of each featured menu item week. We'll be announcing the winners on our social media platforms, follow [@nestatnait](https://twitter.com/nestatnait)

Gather your friends and taste the win with the Nest!

S110  
[nestatnait.ca](https://www.nestatnait.ca)



# NAIT MAIN CAMPUS



## SYMBOLS

- Student Service Centre
- Visitor Parking
- Motorcycle Parking
- Bike Loaders
- ETS Station
- Bus Stop
- Pick-up/Drop-off
- DMTS Location
- Bike Tune-up Station
- Muster Point
- AED
- See Main Campus AED for location or map for detailed locations

## BUILDINGS

- |            |  |            |  |
|------------|--|------------|--|
| <b>A</b>   | Industrial Building  | <b>N</b>   | Sandvik Coromant Centre for Machinist Technology     |
| <b>B</b>   | Centre for Manufacturing Solutions                                       | <b>O</b>   | Central Building                                     |
| <b>C</b>   | Gateway Mechanical Services Centre for Building Environmental Technology | <b>PIC</b> | Productivity and Innovation Centre                   |
| <b>CAT</b> | Feltham Centre   | <b>S</b>   | Activities Centre                                    |
| <b>D</b>   | Alternative Energy Centre  | <b>T</b>   | Administration Building                              |
| <b>E</b>   | Technical Building   | <b>U</b>   | Learning Resources Centre                            |
| <b>F</b>   | Medical Wing   | <b>V</b>   | Industrial Technical Building                        |
| <b>G</b>   | Centre for Chemical Studies  | <b>W</b>   | Centre for Information and Communications Technology |
| <b>H</b>   | Electronics Wing   | <b>X</b>   | South Learning Centre                                |
| <b>HET</b> | Distribution Centre  | <b>Y</b>   | Spartan Centre for Instrumentation Technology        |
| <b>J</b>   | Centre for Electrical Technology   |            |  |
| <b>L</b>   | Continuing Education and Industry Training Centre                        |            |  |

## OFFICES AND SERVICES

- |               |  |               |                         |
|---------------|--|---------------|-------------------------|
| <b>S221</b>   | Arena  | <b>O108</b>   | NAITSA Office           |
| <b>E131</b>   | Athletics  | <b>O105</b>   | NAIT Nugget             |
| <b>E140</b>   | Gymnasium  | <b>S110</b>   | Nest Eatery             |
| <b>CAT215</b> | CAT Computer Commons                             | <b>E121</b>   | Nisichkamatiān Centre   |
| <b>W111</b>   | Computer Training Centre                         | <b>T409</b>   | Office of the Registrar |
| <b>U121</b>   | Ernest's   | <b>CAT180</b> | OneCard Office          |
| <b>S105</b>   | Health Services                                  | <b>CAT180</b> | Parking Office          |
| <b>W101</b>   | International and Intercultural Community Centre | <b>J209B</b>  | Peer Support            |
| <b>E105</b>   | Learning Services                                | <b>D104</b>   | Protective Services     |
| <b>U310</b>   | Library Services                                 | <b>X114</b>   | Shop@NAIT               |
| <b>W203</b>   | NAITSA Computer Commons                          | <b>CAT180</b> | Student Service Centre  |
|               |  | <b>U210</b>   | Student Study Lounge    |

## CAMPUS LOCATIONS

- |             |                       |                 |                       |              |                           |
|-------------|-----------------------|-----------------|-----------------------|--------------|---------------------------|
| Main Campus | 11762 - 106 Street NW | Patricia Campus | 12204 - 149 Street NW | Souch Campus | 7110 Gateway Boulevard NW |
|-------------|-----------------------|-----------------|-----------------------|--------------|---------------------------|

**RCMP·GRC**



ROYAL CANADIAN MOUNTED POLICE • GENDARMERIE ROYALE DU CANADA

# WE'RE HIRING NEW AND EXPERIENCED POLICE OFFICERS IN ALBERTA

Apply today

[rcmpcareers.ca](http://rcmpcareers.ca)



# NOUS RECRUTONS DES AGENTS DE POLICE NOUVEAUX ET EXPÉRIMENTÉS EN ALBERTA

Postulez aujourd'hui

[carrieresgrc.ca](http://carrieresgrc.ca)



Royal Canadian  
Mounted Police

Gendarmérie royale  
du Canada

Canada