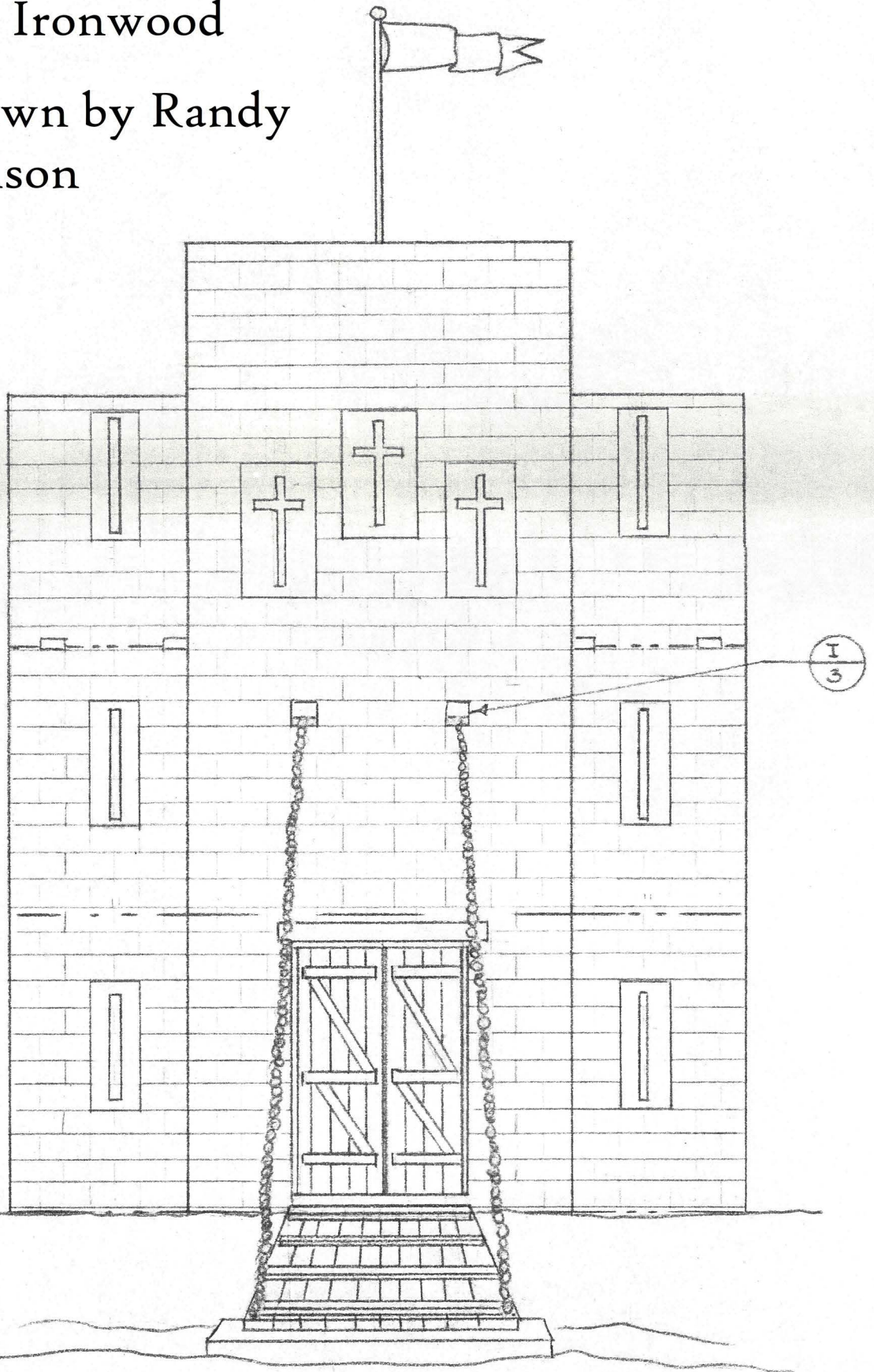


# Castle Ironwood

Drawn by Randy  
Wilson



FRONT ELEVATION

## CASTLE IRONWOOD

### FUNCTION:

Castle Ironwood has several different functions. It will be used for educational and ministry purposes. It will allow Royal Rangers to see medieval life during the classic age of chivalry. They can see how the knight lived and see the different crafts that were part of their lives. It will also serve as a place where special groups, such as Chi Omega Rho, can have special events and activities. It will add another attraction to the Training Center as well as another theme for ministry.

### DESCRIPTION

#### Gatehouse

This one story structure will have a large solid wood drawbridge to allow entrance into Castle Ironwood. The Gatehouse will have an area on top for a person to walk around on.

#### The Armoury

This one story structure will contain the castle's Armoury and Smithy shop. In it will be the tools and different instruments to make medieval armour and other related items. Rangers can visit the Armoury and see how medieval armour was produced and repaired. They can also see how swords and other weapons were made.

#### Kitchen/Bakery

This one story structure will have a medieval hearth and kitchen. Here is where the food for the castle-dwellers is prepared. Rangers can see how foods were prepared and what different kinds of dishes were favored. The Kitchen will also be used to actually prepare food for those using the castle.

### The Courtyard

Contains a area for Rangers to gather and a pedestal for a speaker.

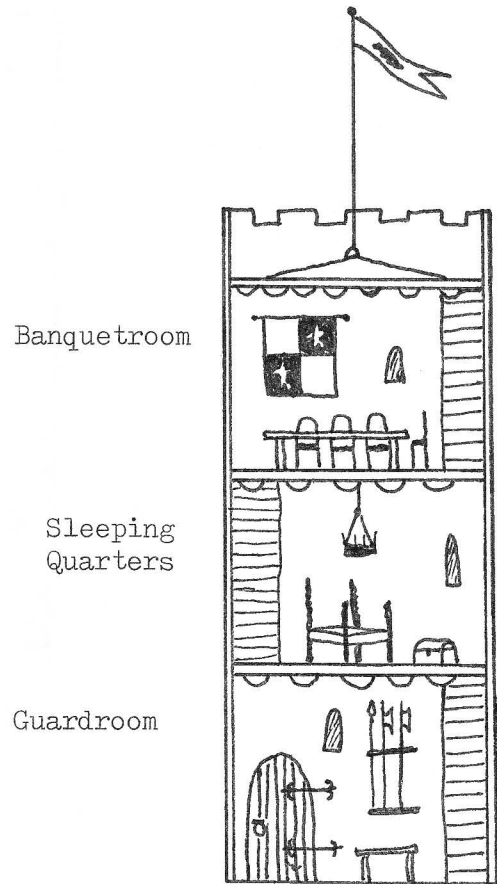
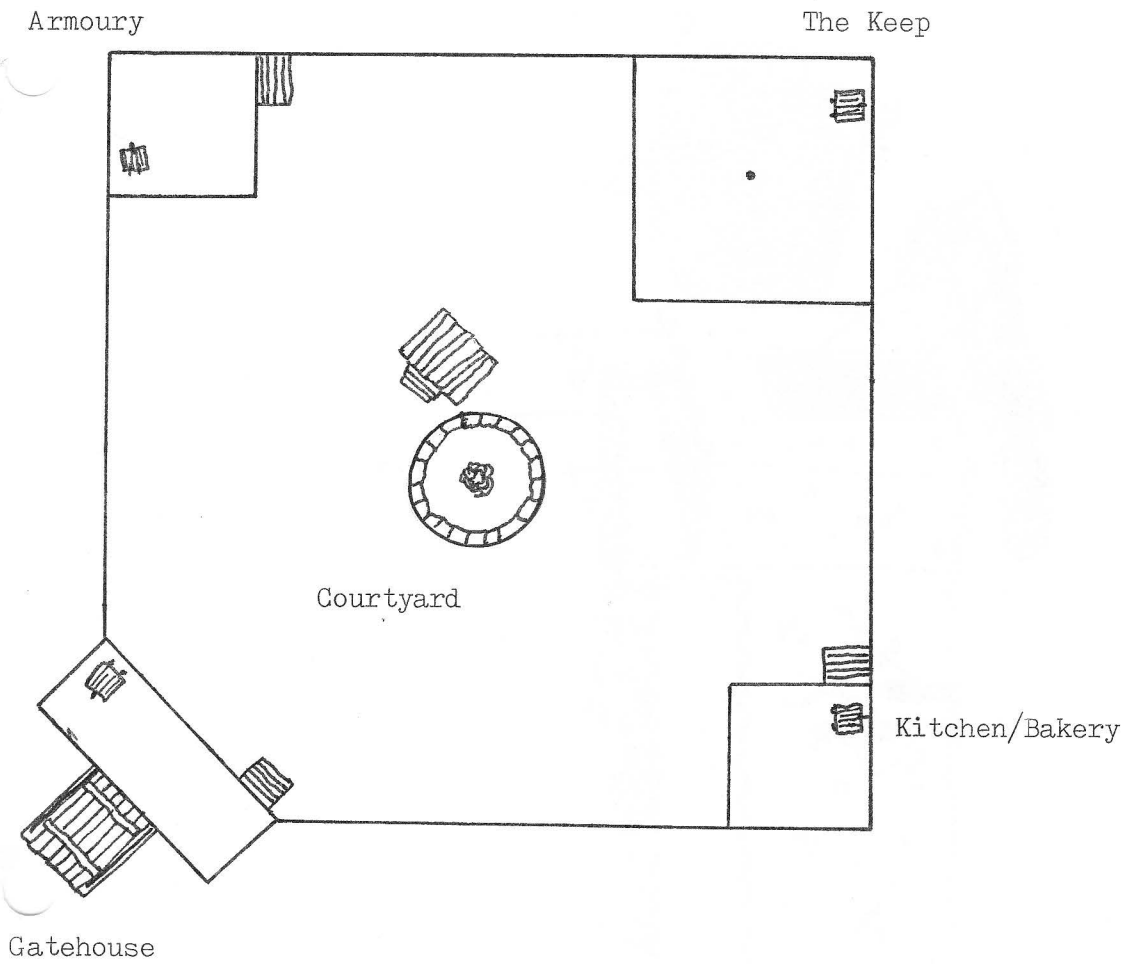
### The Keep

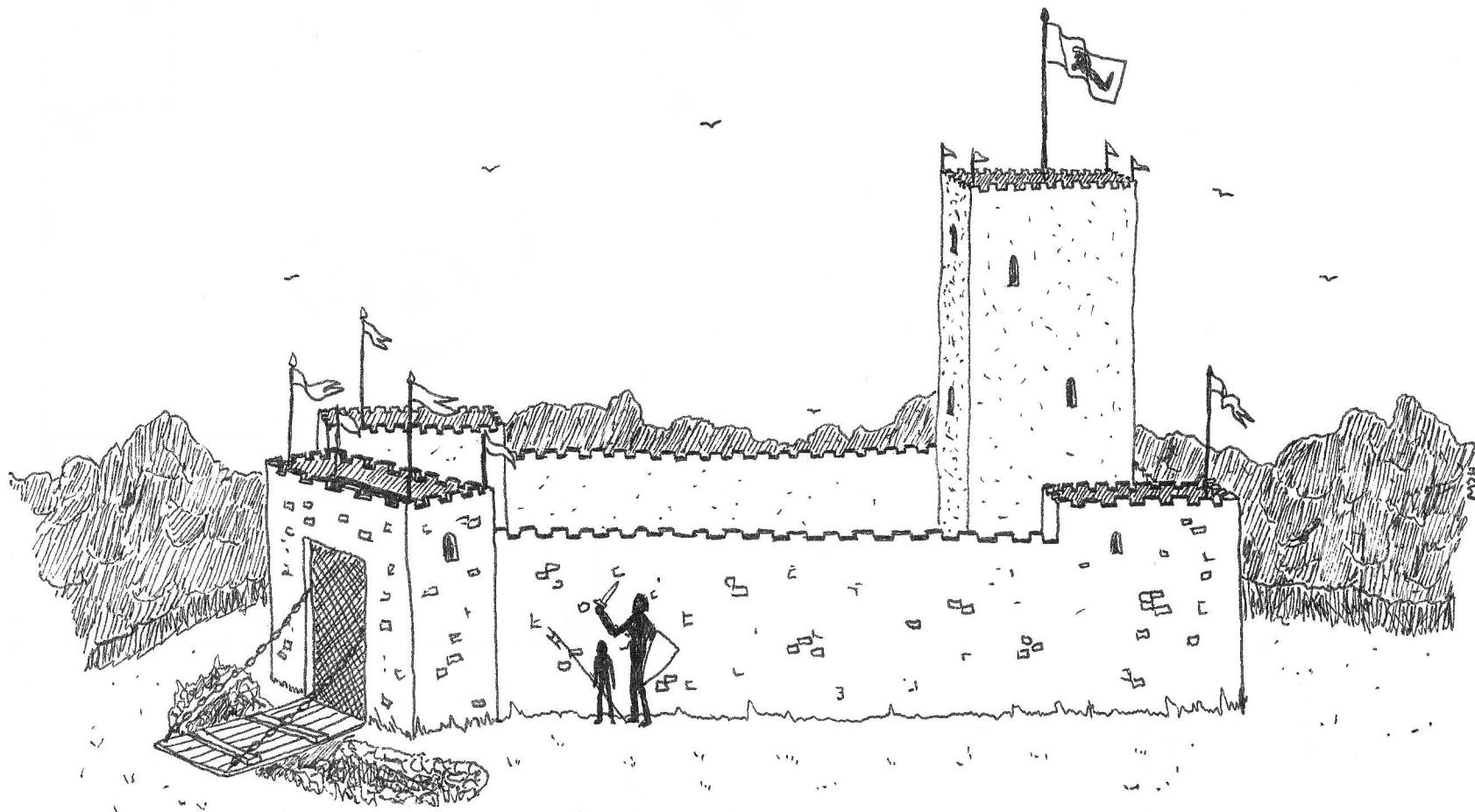
This three story structure contains a guardroom on its bottom story. The guardroom will contain basic pieces of furniture and weapons that the guards would use. The second floor contains the castle's sleeping quarters. In it will be beds used by the castle-dwellers. Other furniture that the knight would have for his private use will also be present. The third floor will be the banquet room. In it will be a large table and chairs. Instruments for eating will be kept there in the furniture that is present. The Banquet room will also double as a meeting room. A trapdoor will lead up to the roof where one can walk around and look over the entire area.

### BUILDING MATERIALS:

Cinder (concrete) blocks will be used over the entire castle to build the Keep, Gatehouse, Armoury, Kitchen and the walls that connect the structures. The footing will be poured concrete. The flooring in the Keep will be made up of beams and planks of wood. The finishing of the other structures on the inside will use wood planking and beams also. Costs will be primarily on concrete blocks, cement, labor(?) and possibly some planking. Estimated cost: \$9,000.

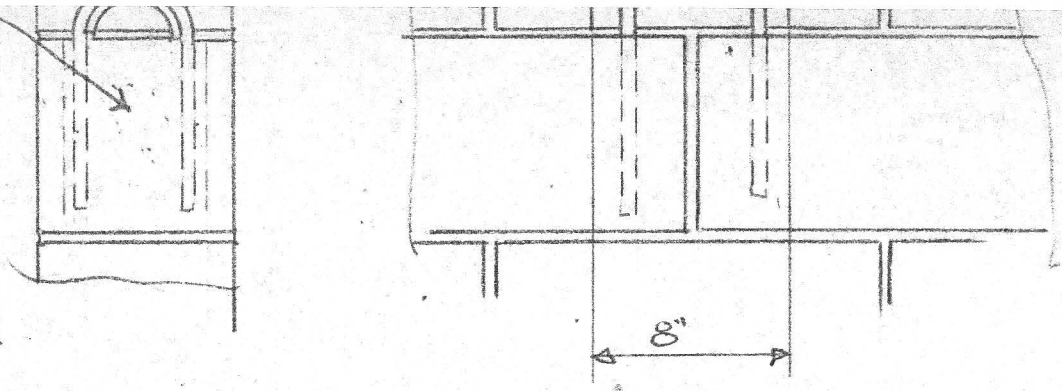
CASTLE IRONWOOD LAY-OUT





CASTLE IRONWOOD

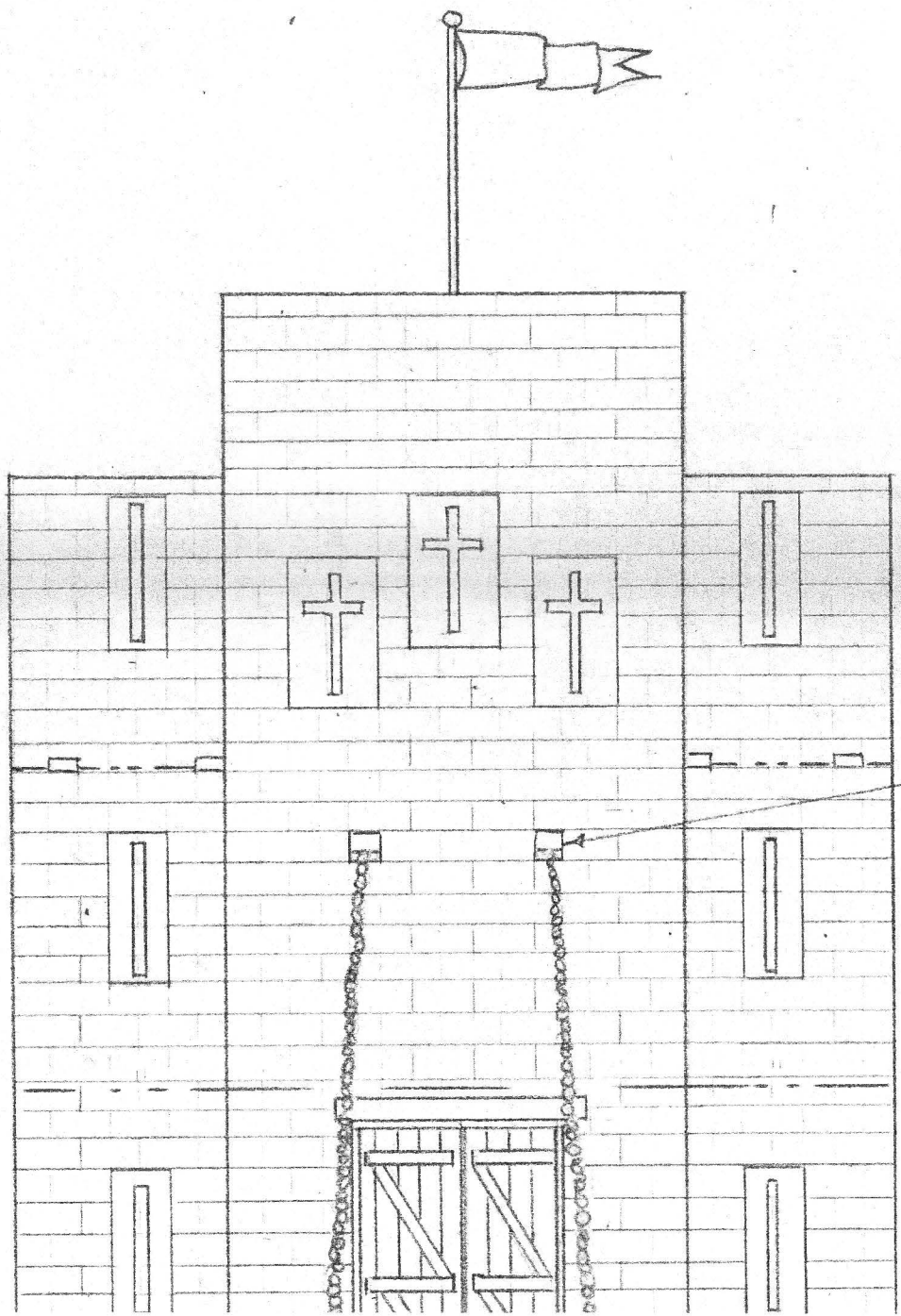
1R



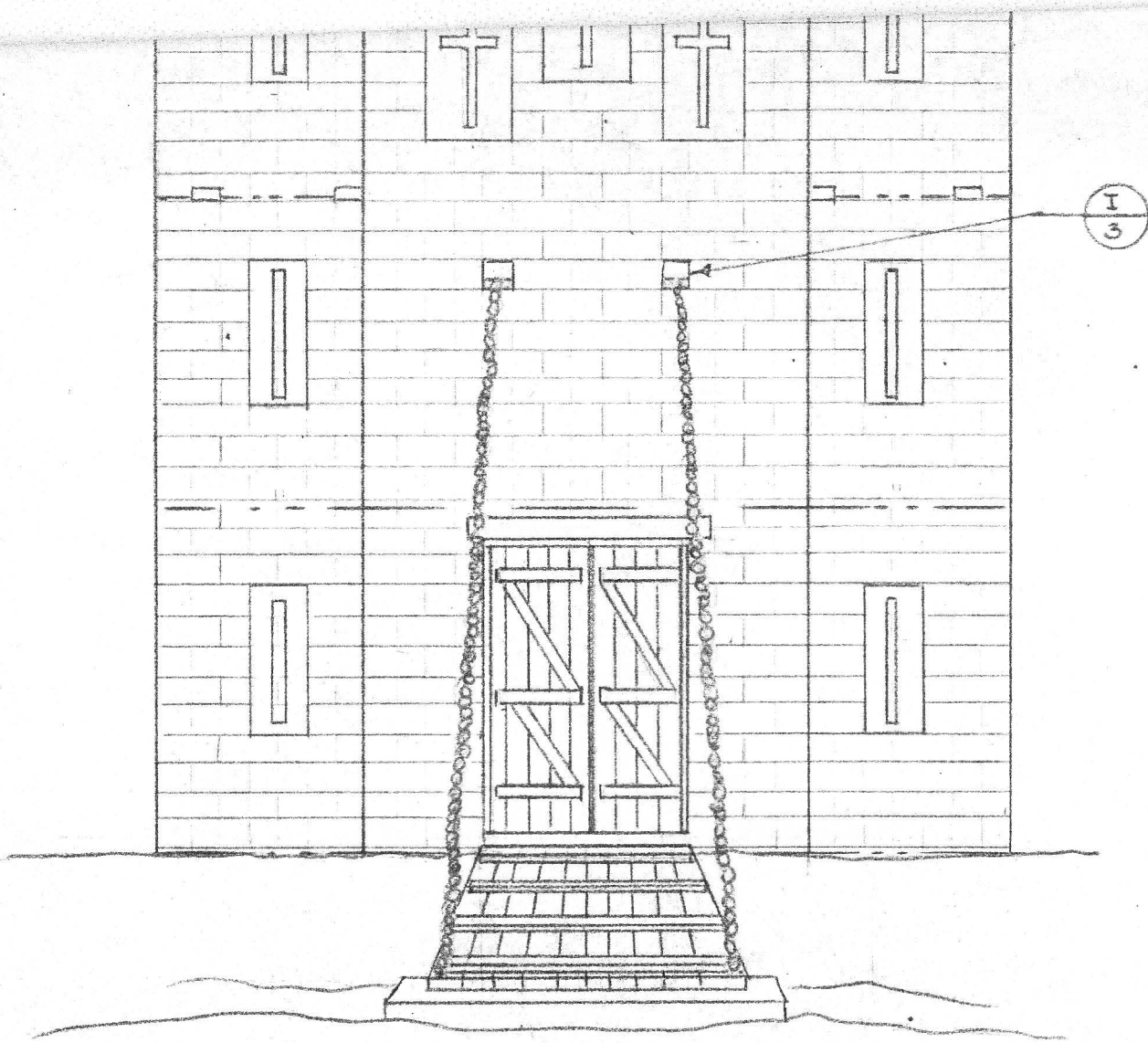
I  
3

DRAW BRIDGE DETAIL (MECH.)

1 1/2" = 1'-0"

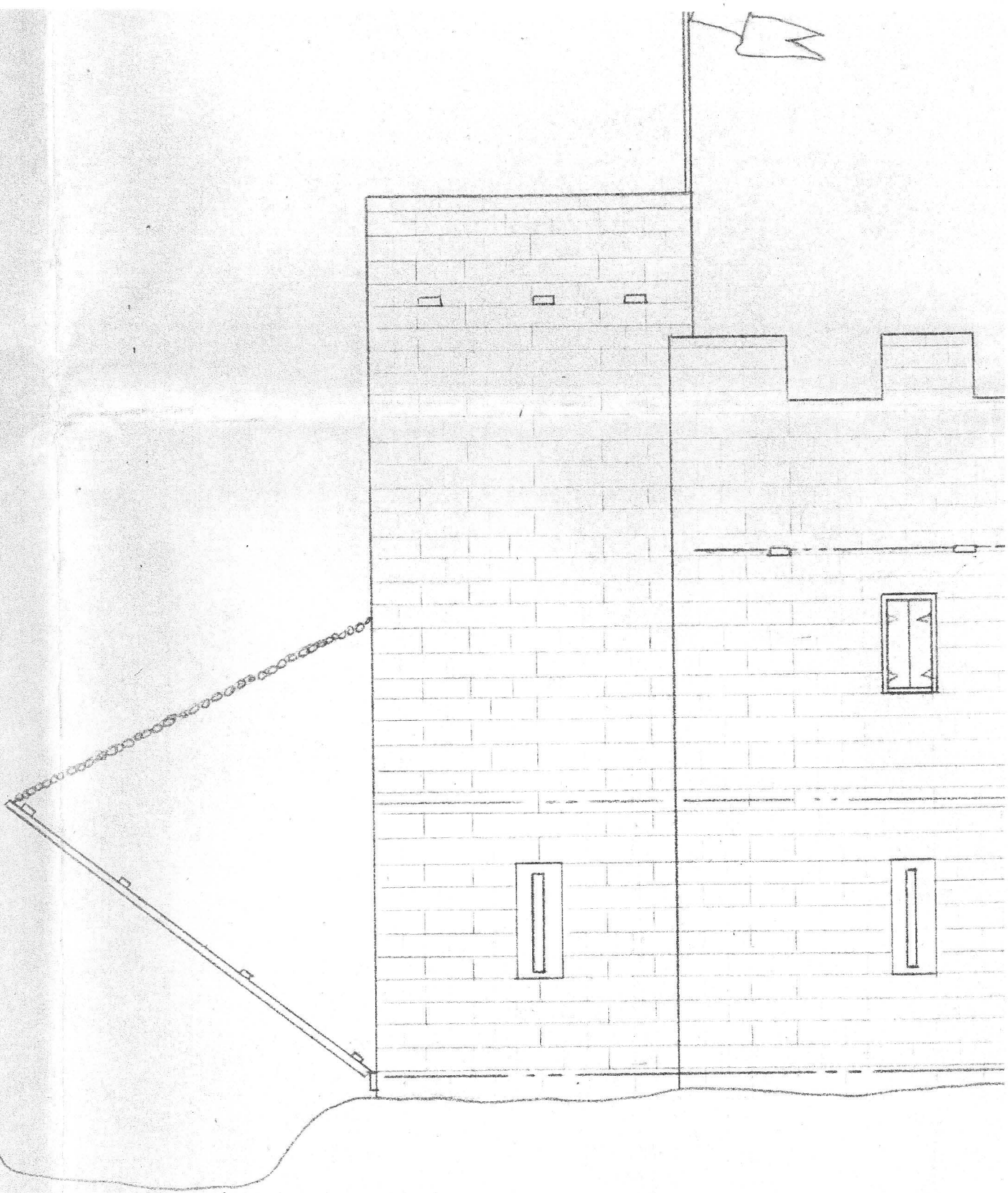


I  
3



FRONT ELEVATION

SCALE 1/4" = 1'-0"



SIDE ELEVATION  
SCALE 1/4" = 1'-0"

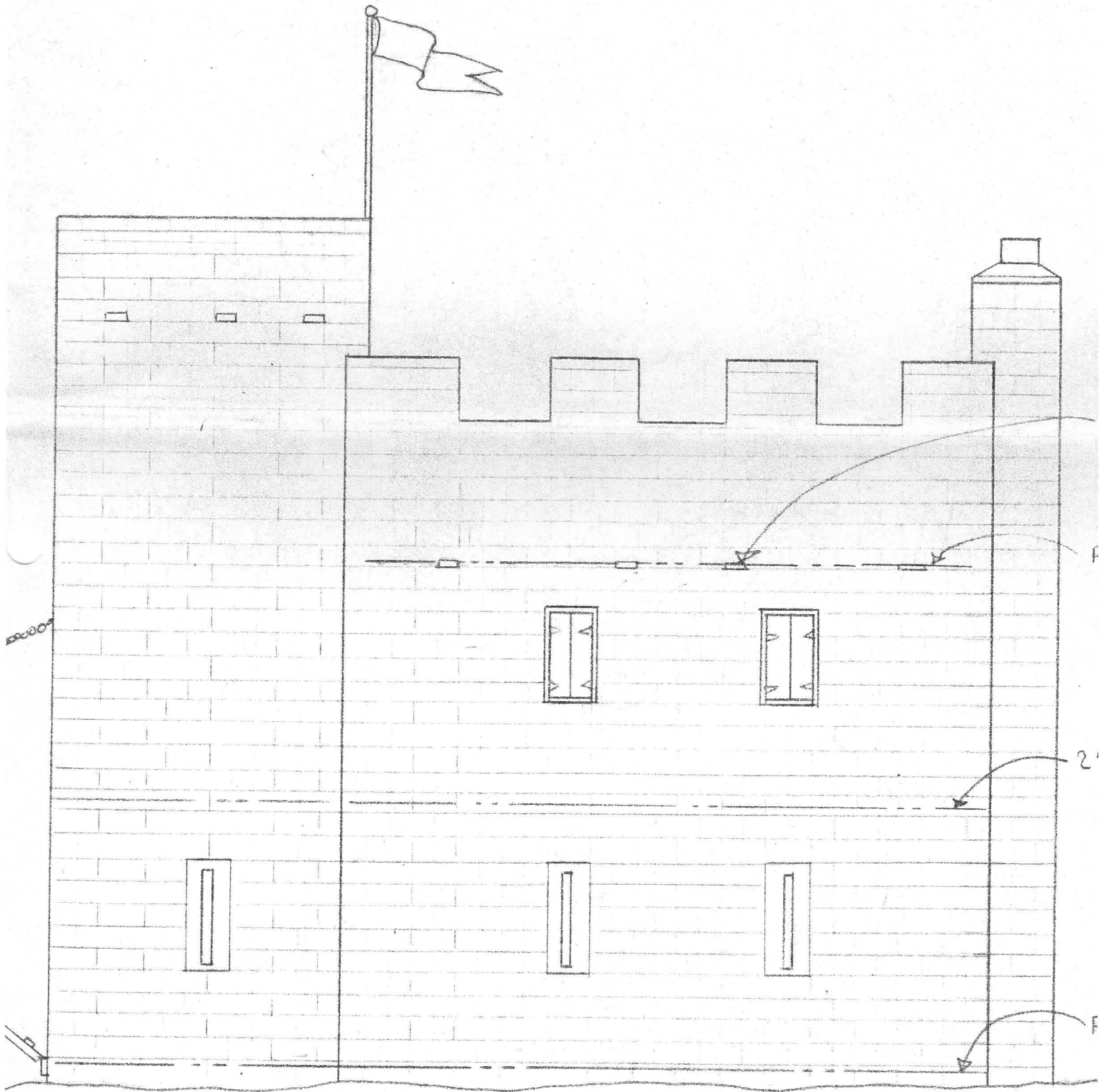
CH
K
DATE



U  
3

ROOF DETAIL  
1/2" = 1'-0"

PER F  
SOLD

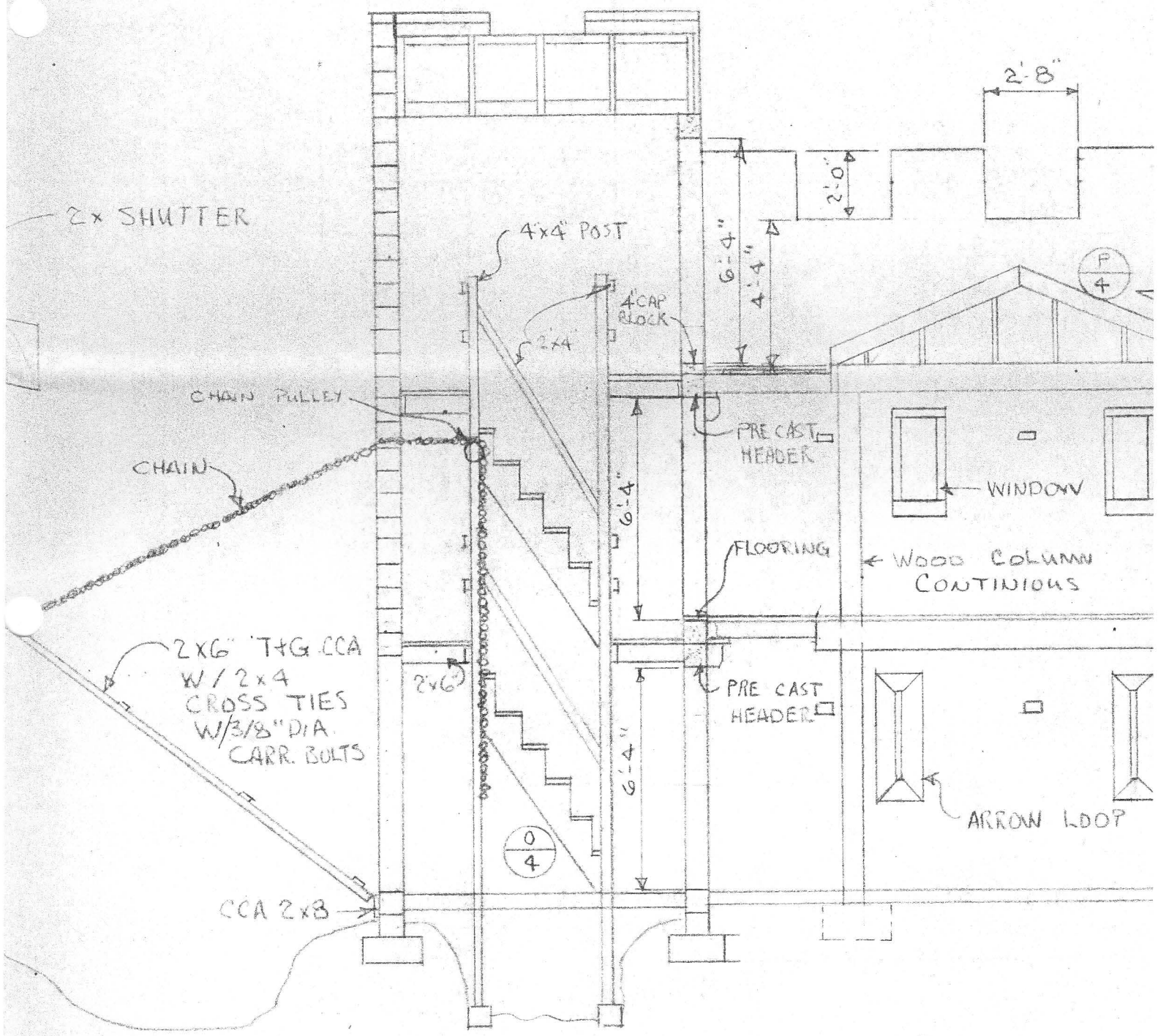


SIDE ELEVATION  
SCALE 1/4" = 1'-0"

(P/2)

FLOOR SUPPORTING CORBEL  
1 1/2" = 1'-0"

2x SHUTTER



2x SHUTTER

CHAIN PULLEY

CHAIN

2x6" T&G CCA  
W/ 2x4  
CROSS TIES  
W/ 3/8" DIA.  
CARR. BOLTS

2x6"

CCA 2x8

(O/4)

4x4 POST

2x4

4x4 CAP BLOCK

PRE-CAST  
HEADER

WINDOW

FLOORING

WOOD COLUMN  
CONTINUOUS

PRE-CAST  
HEADER

ARROW LOOP

(C/2)

SECTION 1/4" =

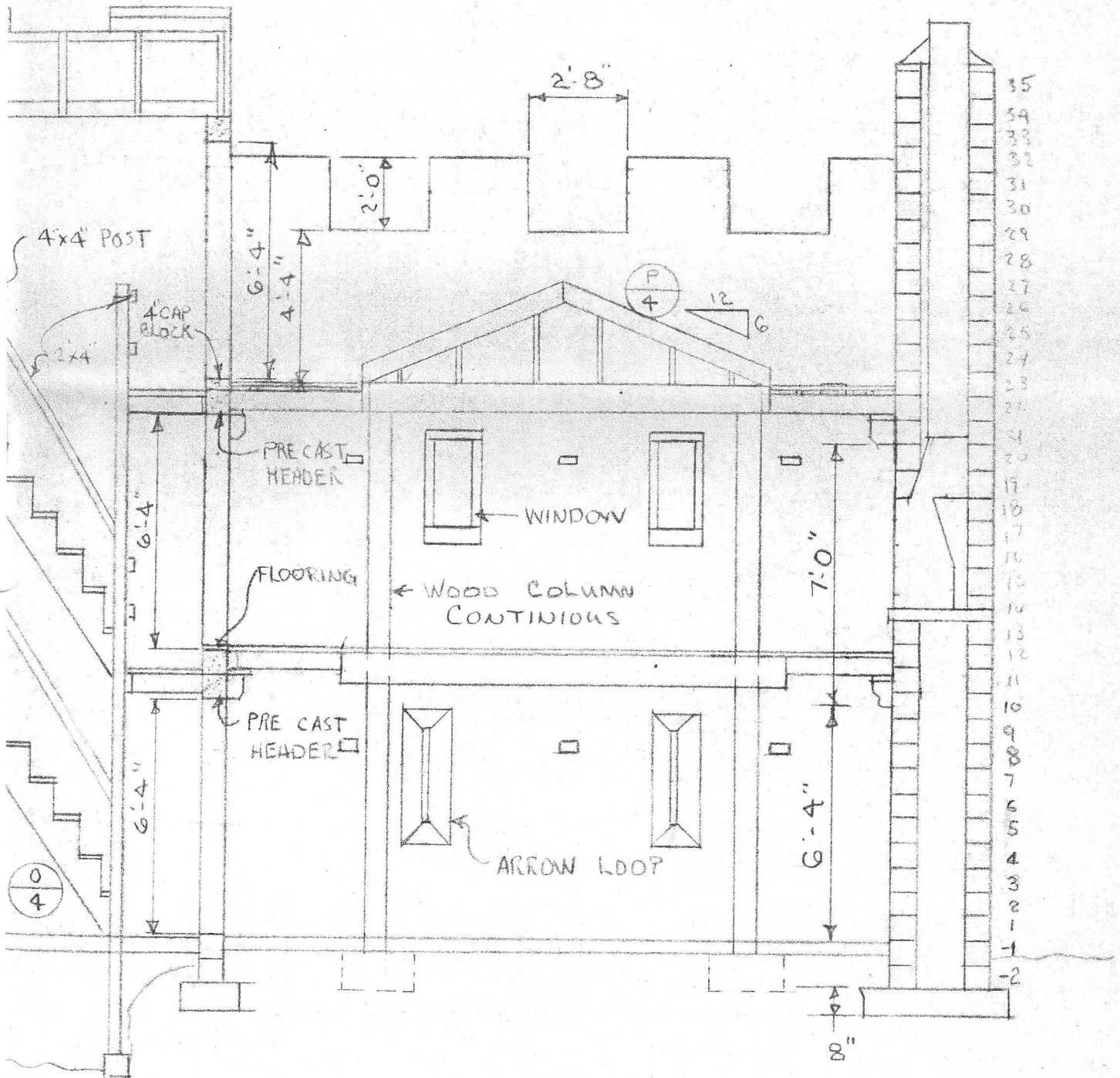
FINISH TO BE 2 COATS EXT. LATEX  
ONE COAT BLOCK FILLER, WHITE.  
OR FINISH TO BE TWO COATS INT. LATEX  
ONE COAT BLOCK FILLER, WHITE.  
PLACE ALL BLOCK WALLS W/ STANDARD DUTY  
TYPE MASONRY WALL REINFORCEMENT

CHI OMEGA  
K F E D

H  
2

FLOOR SUPPORTING CORREL

1/2" = 1'-0"



C  
2

SECTION

1/4" = 1'-0"

EXT. LATEX  
, WHITE.  
INT. LATEX  
ITE.

CHEMICALS