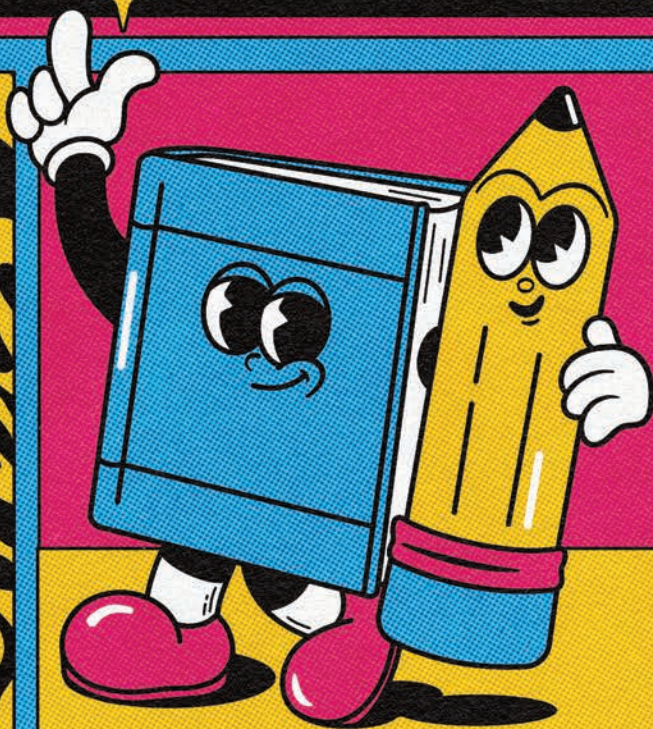




STUDENT HANDBOOK



25
26



See your dentist between classes!

With direct billing, a focus on patient comfort, and a wide range of services right down the street, we're more than just convenient!

Come see for yourself! Visit us in person at 9915 108 Street, or online: toothworksonline.com

NOTES

NETFLIX + MASSAGE CHAIR!?
YES PLEASE!!

DIRECT-BILLING
TO UNI INSURANCE

HAND FREEZING IS
VIRTUALLY PAINLESS
— NO PINCHING!

SO MANY SERVICES:
INVISALIGN, CROWNS,
WISDOM TOOTH EXTRACTION,
SEDATION + MORE!!



TOOTHWORKSONLINE.COM
780-428-7830

7 AM

8 AM

9 AM

10 AM

11 AM

12 PM

1 PM

2 PM

3 PM

4 PM

STATISTICS

DENTIST

ENGLISH

TOOTHWORKS
DENTISTRY

9915 108 Street
Petroleum Plaza South
Edmonton AB T5L 2G8
toothworksonline.com



DR JENNA + DR SAM

TOOTHWORKS
DENTISTRY

CONTENTS

SAMU

02 Welcome

03 Our Mission at SAMU

04 Fee Breakdown

06 Letter from the President

07 Student Leadership

SAMU STUDENT RESOURCES

09 Student Life - Events

11 Student Groups

12 The Griff x Volunteer Opportunities

13 Health and Wellness - Student Benefits Plan

14 Mental Health and Wellness x Legal Care Program

15 Benefits Management Program

16 Breakfast Club x Farmers' Market x Peer Support

17 Safe Walk x The Pantry x Support Hub

18 Financial Supports - Samu Cares x Part-Time Employment x Student Refugee Program

19 Student Resources - Student Advocacy Centre x U-Pass

20 How to Talk to Your Professor

MACEWAN RESOURCES

21 Office of the University Registrar x Community Nest Program x Student Success Navigator

22 Student Leadership & Volunteering x Student Experience Record x MacEwan ID

23 Access and Disability Resources x Student Conduct

24 Student of Concern x Academic Integrity x Academic Advising

25 Wellness and Psychological Services x kihêw waciston

26 Career Services x Office of Research Services

27 Work Integrated Learning x Office of Sexual Violence Prevention, Education, and Response

28 Sexual Violence Policy x Childcare on Campus

29 Library

30 Locker Registration x MacEwan University Health Centre

31 Print Services x Technology Support Desk

32 Transportation Services x MacEwan International

33 MacEwan University Alumni Office

34 MacEwan University Sport and Wellness

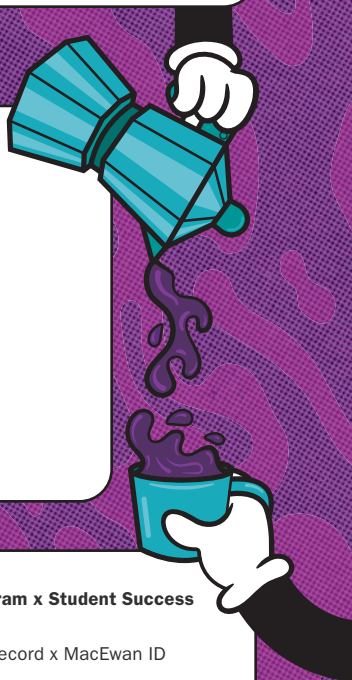
35 MacEwan University Athletics x The Centre for Sexual and Gender Diversity

36 Office of Human Rights

37 Confidence Line x C.H.A.R.M.

38 Faculty listings

39 Tutoring Resources



Welcome to SAMU

SAMU

SAMU is here for you, whether you are just starting university or almost graduating. Our many programs, events, and services aim to make your student journey easier and a little more fun.

Situated in the middle of campus, your SAMU Building features delicious food vendors, tons of seating with charging stations, a student lounge with a full kitchen and microwaves, portable chargers to rent for free, a dedicated quiet study room, event space, the Support Hub with access to many services, the Student Groups area and more!

Watch for our biweekly newsletter in your MyMacEwan email to stay current on everything we're offering. Inside you'll find details on prizes, free food, student services, thrilling events, activities and exciting opportunities to get to know your student community!

Above all, SAMU is here for you. Whether that's through academic, financial, health or wellness support, a fun break from studies, or just a cool place to hang out. Get to know us at samu.ca/experience

LAND ACKNOWLEDGEMENT

We acknowledge that the land on which we gather in Treaty Six Territory is the traditional gathering place for many Indigenous people. We honour and respect the history, languages, ceremonies and culture of the First Nations, Métis and Inuit who call this territory home.

The First Peoples' connection to the land teaches us about our inherent responsibility to protect and respect Mother Earth. With this acknowledgement, we honour the ancestors and children who have been buried here, the missing and murdered Indigenous women and men, and the process of ongoing collective healing for all human beings. We are reminded that we are all treaty people and of the responsibility we have to one another.



CONTACT US

SAMU Building
Rm. SA-301, 10850-104 Ave
Edmonton, AB T5H 0S5

Email: info@samu.ca
Phone: 780.497.5631
samu.ca

MISSION, VISION & *Values*

OUR MISSION AT SAMU

SAMU builds a positive student experience by creating a place to engage and connect, being a champion for all students, and providing opportunities that allow them to get the most out of their educational journey.

VISION

All students benefit from a vibrant student life and culture of empowerment.

OUR VALUES

Our five values are the basic tenets of how we as SAMU staff and elected student representatives act and make decisions.



STUDENTS FIRST

SAMU is here for the students. As such, our decisions and actions need to be in the best interest of current and future students.

INCLUSIVENESS

All students belong to SAMU and should feel welcomed and safe. Diversity is embraced, and we continue to learn new ways of being respectful and empathetic to all students and each other.

ADAPTABILITY

Underlying all the values is SAMU's ability to adjust and respond quickly to meet students' needs.

RELEVANCE

SAMU continually listens to students, monitors trends, builds partnerships and works to be on point to the changing student population.

ACCOUNTABILITY

At SAMU, we take responsibility for our actions and decisions. Likewise, we are responsible stewards of the resources entrusted to us by students.

★ FEE Breakdown ★

SAMU is about students helping students. To meet diverse goals, your SAMU fees are instrumental in making sure that all MacEwan students get the support they need and experience an equal chance at success.

SAMU Fees enable our team to enrich the student experience by delivering support and services to students. To offer the greatest amount of support through these funds, we are guided by four strategic goals:

STRENGTHENING SAMU OPERATIONS

SAMU is an innovative and sustainable organization with an engaging work environment.

- Providing job opportunities for students
- Building an organization that is sustainable and supportive of students

STUDENT EXPERIENCE AND ENGAGEMENT

Your student experience is enhanced by the opportunities SAMU provides. Fees guarantee the student body equal access to the fun events and programs SAMU hosts, such as:

- Fall Fest • Student Groups • The Griff student magazine
- SAMU Speaker Series and Live Comedy Show
- Meet SAMU • And more!

STUDENT SUPPORTS

SAMU's student supports respond to unique and evolving needs. Your fees enable programs and services that help students manage financial, mental, physical and social stresses, including:

- Peer Support • The Pantry • Breakfast Club
- Safe Walk • Student Advocacy Centre

STUDENT VOICE

SAMU amplifies the student voice.

- Advocacy to the different levels of Government and MacEwan University
- Opportunities to get involved yourself and represent your fellow students on Students' Council, Executive Committee or various MacEwan and SAMU Committees
- Easy access to voting in Executive Committee and Students' Council elections



PER STUDENT PER SEMESTER

\$44.97

22.21% of
total fees

\$91.14

45.01% of
total fees

\$40.98

20.24% of
total fees

\$25.40

12.55% of
total fees

Total cost per student per Fall/Winter semester:

\$13.50/credit

\$202.50 based on a
15-credit course load

Total cost per student per Spring/Summer semester:

\$7.75/credit

Deadline for payment of Regular Session fees:

Fall - September 29 | Winter - January 30

HEALTH INSURANCE FEE

Provides students with healthcare insurance. Visit samu.ca/insurance for more info.

\$114.75 per semester

Opt-out Available*

Opt-out deadlines: Sept. 29 & Jan. 30

DENTAL INSURANCE FEE

Provides students with dental insurance. Visit samu.ca/insurance for more info.

\$93.37 per semester

Opt-out Available*

Opt-out deadlines: Sept. 29 & Jan. 30

MYLEGALPLAN FEE

Student plan that addresses the concerns over financial pressures of pursuing legal consultation or action. Visit samu.ca/insurance for more info.

\$18^

Opt-out Available

Opt-out deadlines: Sept. 29 & Jan. 30

U-PASS FEE

U-Pass provides students with affordable transit options for the school term. See page 19 for more info.

\$180

Opt-out Available*

Opt-out deadlines: Sept. 30, Jan. 31 & May 30

SAMU BUILDING LEVY FEE

The SAMU Building focuses on student space and was voted for by the students in the 2015 referendum. This fee goes directly to paying off the Students' Association building mortgage, and enables an ongoing hub for students to gather, relax and study.

\$35 per semester

Opt-out Not Available

GLOBAL EDUCATION FEE

This fee provides funds to sponsor refugee students' attendance at MacEwan University.

\$3.50†

Opt-out Not Available

*Some conditions apply.

^Fee is assessed per academic year, not term.

†Fee applied to students enrolled in 9+ credits.

Letter from the **PRESIDENT**

DEAR STUDENTS,

The yellowing leaves and cooling weather are hallmarks of the Autumn season, but they also mark another major event on campus: the arrival of students! Whether you are new to campus or you're returning to continue your studies, welcome to MacEwan's halls. As your Students' Association, we have been hard at work all summer — planning programs, services, events, and advocacy that best serve your needs and interests as members of SAMU.

Over the past year, SAMU focused on supporting students through an overwhelming affordability crisis, created in large part by skyrocketing costs of living and education. Through our advocacy, we managed to ensure Fall Reading Break lives on, secured nearly \$1.6 million in additional funding for student supports, successfully advocated to remove the tech fee and the deferred exam fee for students, and boosted SAMU's own food support offerings in response to overwhelming food insecurity among students.

Our work is far from over, though, and over the next year, you can expect us to keep pushing on the issues that matter most to you. While SAMU's staff continue to develop and grow the offerings that enrich your student experience, your elected representatives at SAMU are busy advocating to decision makers on your behalf. Within MacEwan's walls, we will be busy working within the university's governance bodies to ensure students are the top priority. Whether at a General Faculties Council meeting or in conversation with program partners on campus, you can rest easy knowing you are well-represented and that your voice is being heard.

Out in the community, your representatives are meeting with all levels of government, as well as non-profit and business leaders, to ensure we exhaust every possible avenue of advocacy on your behalf. Federally and provincially, our focus is on affordability, including the cost of tuition, the availability of grants for students, and mental health funding. Municipally, our focus is turning to housing affordability and transit safety and availability.

As you go into this new academic year, know that SAMU is with you every step of the way to help you navigate the complexities of post-secondary education while providing you with plenty of opportunities to have fun and meet new people. It's true that university is what you make of it, so I invite you to be open, curious, and adventurous as you make your way through your journey at MacEwan.

Warm regards,



Nathan Poon,
SAMU President 2025/26



STUDENT Leadership

SAMU has numerous opportunities for students to gain experience, lead change, build connections and even earn some income while attending university. Get a head start on your career and explore all the options available including running for a position on Students' Council or the Executive Committee, or applying to sit on a SAMU or MacEwan Committee.

samu.ca/student-leadership

STUDENT GOVERNANCE

Student governance at SAMU works like this: MacEwan students elect 14 of their peers to represent them as Students' Councillors and five to serve as the Executive Committee. Together, they form the Students' Council. The Students' Council is the highest governing body within the Students' Association. With student consultation, they set SAMU's direction through bylaws and policies.

The Executive Committee oversees the SAMU General Manager. In addition, each member of the Executive Committee is responsible for advising both Students' Council and other Executive Committee members on their portfolios.

It may sound complicated, but this system ensures that the needs of MacEwan students are met in a diplomatic manner and that everyone is held accountable to MacEwan students.

Elections

Eligible students are welcome to run for a Councillor or an Executive position. The election for Student Council takes place in the Fall, and the Executive Committee election takes place in the Winter. All Executives are responsible for their specific portfolios and other responsibilities as described in SAMU Policies.



2025/2026 SAMU EXECUTIVE COMMITTEE



Nathan Poon | President | He/Him

The President supports the direction, initiatives and advocacy efforts of all other Executive Committee members. They also serve as the official spokesperson of SAMU and the principal contact for SAMU legal affairs.

sapresident@macewan.ca | 780.497.5472



Chioma Uzor | Vice President Academic | She/Her

The Vice President Academic is the direct contact for academic relations of SAMU, including university committees and academic initiatives.

savpacademic@macewan.ca | 780.497.5476



Wilfrid Youbi Fansi | Vice President External | He/Him

The Vice President External is responsible for developing the external advocacy priorities for SAMU, and engages with relevant external stakeholders (including elected government officials) on matters concerning SAMU and its members.

savpexternal@macewan.ca | 780.633.3763



Andrei Santiago | Vice President Governance and Finance
He/Him

The Vice President Governance and Finance is the direct contact for the internal affairs of SAMU, including SAMU Building operations, financial planning, governance and administration.

savpoperations@macewan.ca | 780.497.5479



Alem D. Tesfay | Vice President Student Life | He/Him

The Vice President Student Life is the direct contact for the non-academic affairs of SAMU, including SAMU's programs, services, student groups and events.

savpstudentlife@macewan.ca | 780.497.5468



Welcome to your

SAMU

BUILDING



PASSING THROUGH?

WHY NOT STOP AND ENJOY OUR:

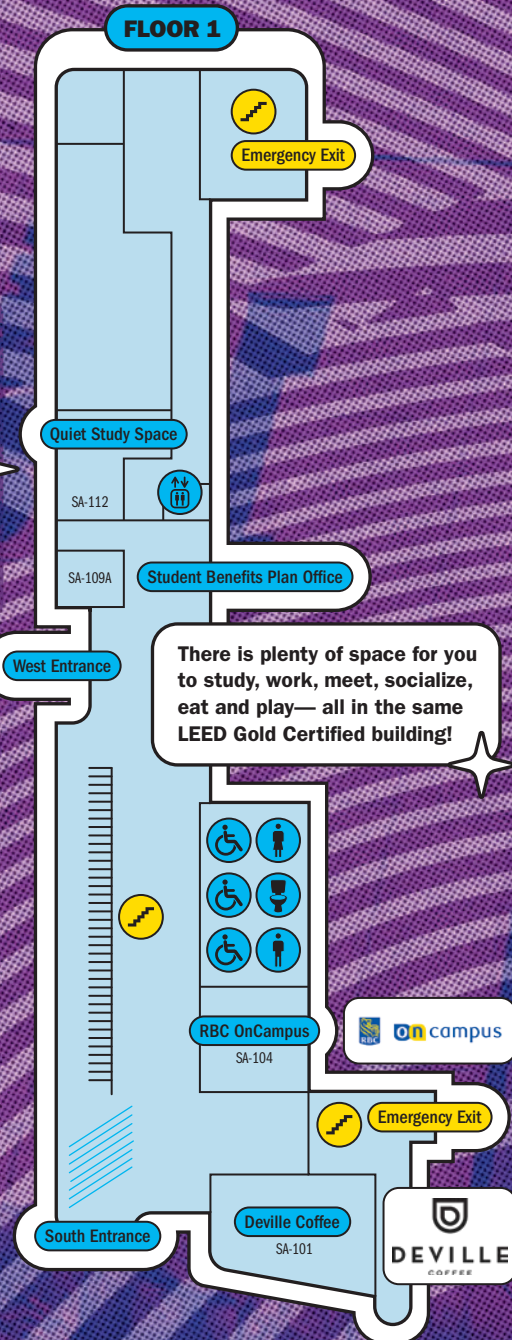
Quiet study space • Student Lounge with microwaves • Charging ports and plugins • Support Hub • Seating areas to eat, work and relax • RBC On Campus and no-fee ATM • Deville Coffee, Chachi's, EDO Japan and OPA! of Greece • Student Groups space (with rooms to book) • Student Benefits Plan Office • SAMU Admin offices & Student Council Chambers

**CHECK OUT YOUR NEW FAVOURITE
BUILDING ON CAMPUS HERE**



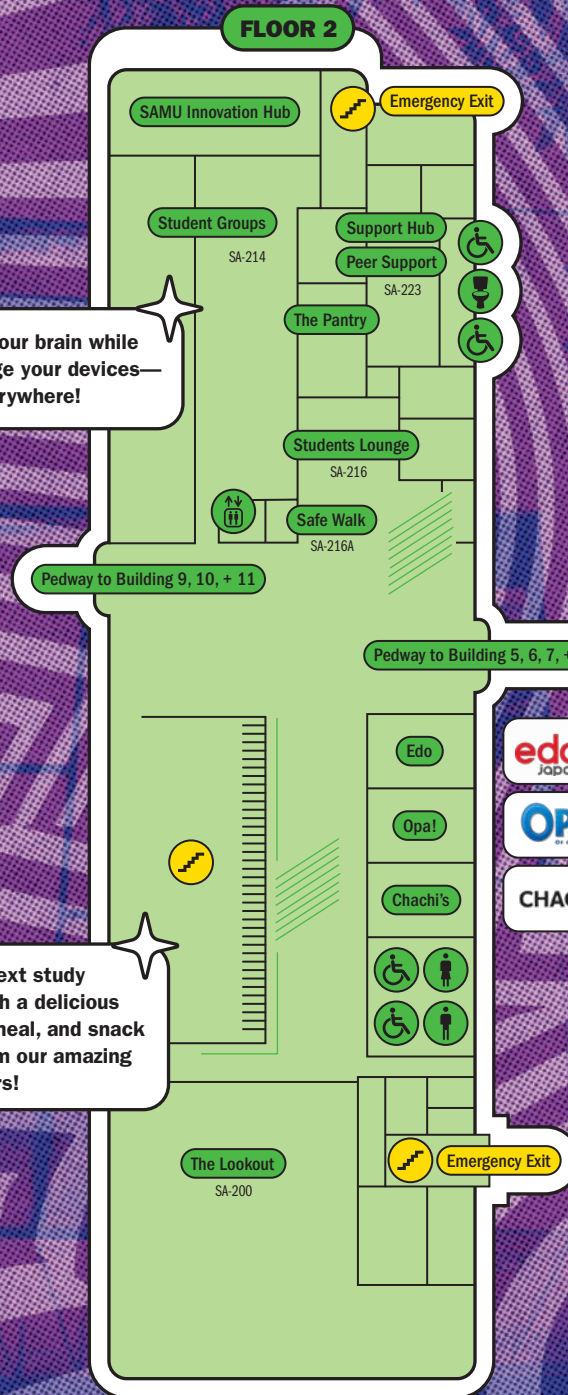
HOW CAMPUS ROOM NUMBERING WORKS:

SA-112
BUILDING | ROOM
FLOOR



Recharge your brain while you recharge your devices— plugins everywhere!

Fuel your next study session with a delicious beverage, meal, and snack options from our amazing food vendors!

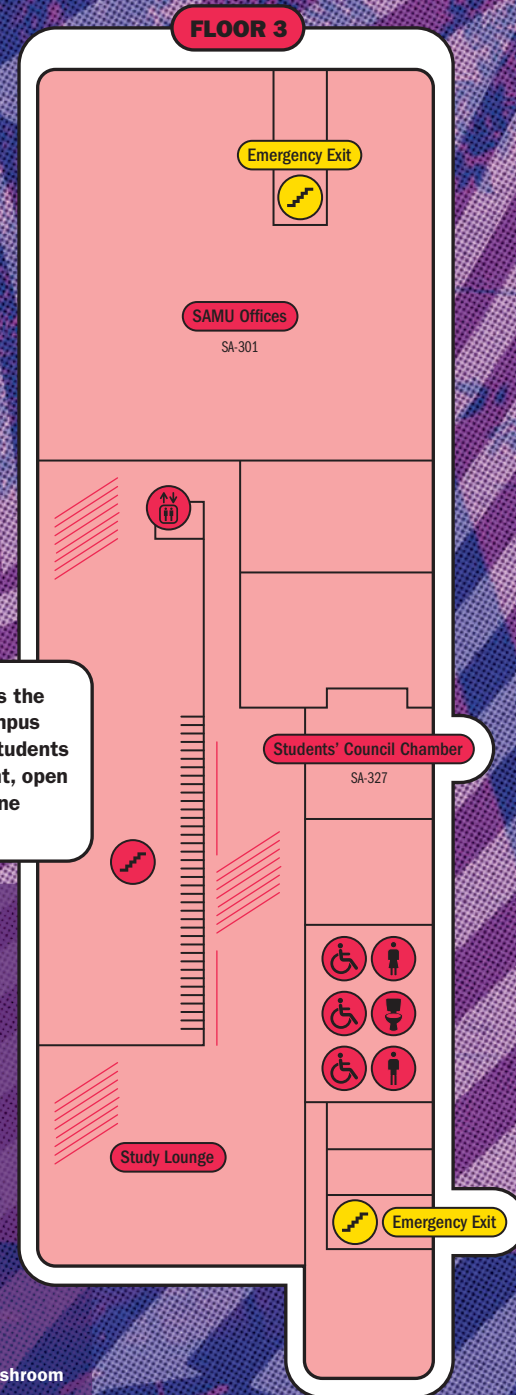


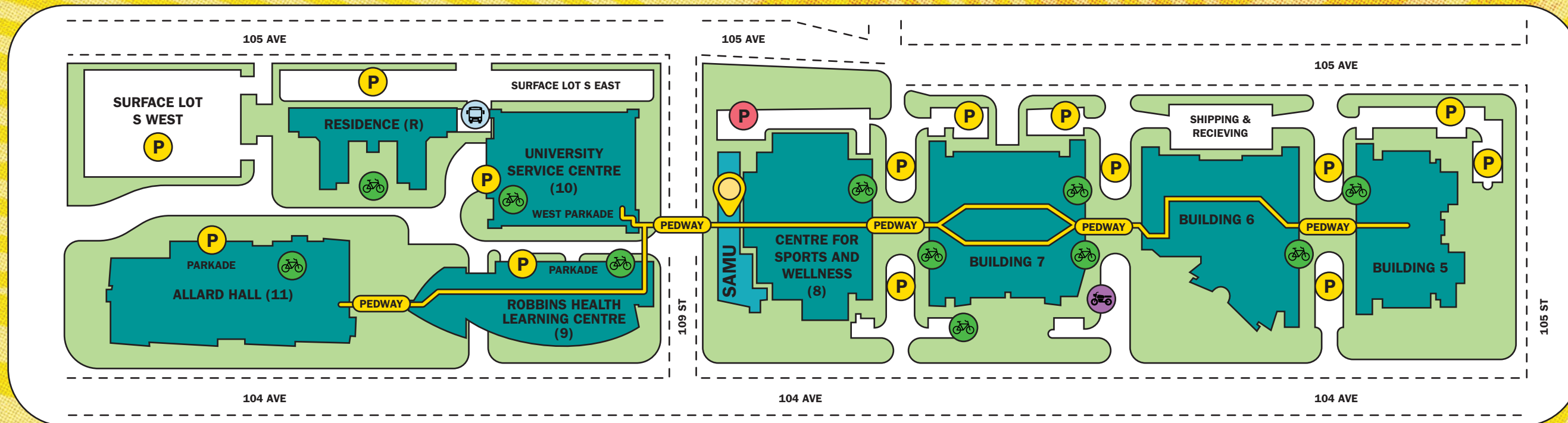
SAMU BUILDING

THE SAMU BUILDING is the newest building on campus and was designed by students for students. This bright, open building was built for one purpose, you!

LEGEND

- Stairwell
- Seating Area
- Elevator
- Women's Washroom
- Men's Washroom
- Gender Neutral Washroom
- Wheelchair Accessible Washroom





Amenities

BUILDING 5

The Bean's List • ATM

BUILDING 6

MacEwan Bookstore • Starbucks • Tim Hortons • Subway
Towers Pub • Cafeteria • Parking Services • Print Services
ATM • Griffins Landing Convenience Store

BUILDING 7

Underground Parkade • Welcome Centre • MacEwan International
MacEwan Careers & Experience • Office of the University Registrar
Early Learning Centre • John L. Haar Library • Makerspace
Technology Support

BUILDING 8 (CENTRE FOR SPORT & WELLNESS)

Sport and Wellness • Swimming Pool • Gymnasium

SAMU BUILDING (SA)

See map on reverse side for amenities and services.

BUILDING 9 (ROBBINS HEALTH LEARNING CENTRE)

Paul Byrne Hall • kihew waciston • Takam Market (Food Vendors)
Pizzaforno Automated Pizza • Security Services • ATM

BUILDING 10

West Parkade • University Services Centre

RESIDENCE (R)

Student Residences • ATM

BUILDING 11 (ALLARD HALL)

Centre for Sexual & Gender Diversity • Roundhouse Innovation Hub
Triffo Theatre • Underground Parkade • ATM

CAMPUS

LEGEND

-  **PUBLIC PARKING**
-  **PERMIT ONLY PARKING**
-  **BUS PARKING**
-  **MOTORCYCLE PARKING**
-  **BIKE PARKING**



STUDENT



EVENTS

SAMU runs a variety of events on and off campus throughout the year. Our events are primarily in-person but are occasionally offered online or in a hybrid format. Please visit samu.ca/events for the most recent updates and to see our full calendar.

MEET SAMU

Come hang out with SAMU and learn what we can do for you each semester. Find us during the first week of classes (in Fall and Winter) in the SAMU building for games, prizes and most importantly, information about SAMU.

FALL FEST

Fall Fest takes place on campus during the first week of the Fall Semester and is the largest event that SAMU hosts. This free event on the front lawn includes a concert, food trucks, beer gardens, exhibitor tents and other activities for students to enjoy! Past performers include Mother Mother, bbno\$, Tai Verdes and Mark Ambor.

SAMU SPEAKER SERIES AND LIVE COMEDY SHOW

SAMU brings in professional speakers and comedians once per semester to discuss different topics of relevance to students or to entertain with stand-up comedy. Some previous speakers have included Tegan and Sara, Bill Nye and Josh Peck. We've also had the pleasure of hosting comedians Trevor Wallace, Atsuko Okatsuka and Connor Wood!

DIRTY SEXY BINGO

Dirty Sexy Bingo is bingo with prizes that feature both SFW and NSFW items, hosted by drag queen Vanity Fair! This ticketed event sells out quickly every semester.

BATTLE OF THE BANDS

Five MacEwan student bands compete on the Starlite Room stage for a chance to play the next edition of Fall Fest. Enter your band! Past champions include Misfortune Tellers and Blood Pressure.



WINTER FEST

The Winter term's answer to Fall Fest. Winter Fest is a ticketed indoor concert featuring touring acts at The Starlite Room. Last year's lineup included WHIPPED CREAM, Preston Pablo and Ari Hicks.

SPLASH & BASH

Enjoy an 18+ pool party with 1800 of your closest university friends from SAMU and NAITSA at the World Water Park in West Edmonton Mall!

SAMU AWARDS NIGHT

SAMU Awards Night is when we honour the students, volunteers and student groups who contribute to SAMU's mission of creating a vibrant campus life. This ceremony takes place every year at the end of the Winter Semester. Awards include Student of the Year, Campus Champion, SAMU Volunteer of the Year, the Dorothy Gray Award and more. Nomination forms for these awards are distributed in February.

OTHER SAMU EVENTS

SAMU also hosts drop-in events throughout the year, such as our Maker Series, Music Bingo, Trivia, SAMU Cinema and more! We also partner with MacEwan for initiatives such as New Student Orientation, MacEwan Open House, Brain Freeze and Pride Week. For more information on upcoming events, visit samu.ca/events.

SAMU MARKETS

Every semester, SAMU welcomes student, staff and community vendors to sell their wares at our markets! Looking to treat yourself, or grab that perfect handcrafted gift? Keep your eyes open for Holiday Market (December) and Spring Market (March) from your SAMU Events team.

STUDENT GROUPS

Joining a student group is a great way to meet new people with similar interests, get involved in campus life and attend student-led events. Student groups are also a fantastic way to network and learn a variety of important skills, including event planning, leadership, financial management and marketing. Student groups offer students both opportunities and a sense of community.

SAMU is home to over 100 diverse groups, which include, but are not limited to, educational, political and awareness, interest and hobby-based, and spiritual and cultural groups. There's something for everyone, and if you have a new idea and want to start a group, we'll gladly help you create one.

Please find our new group application, news and updates, upcoming events and a list of current student groups here: samu.campuslabs.ca/engage/. You may click on any of these groups and click "join" to join a group.

STUDENT GROUPS SPACE

The Student Groups Space is located on the second floor of the SAMU Building next to the elevator (SA-214). The Student Groups Space provides bookable study rooms, additional seating and a small event space for all MacEwan students. This space is also where you can find the Student Groups Assistants, who are happy to answer any questions you have about Groups or the space. The space is open 9 a.m. to 9 p.m. Monday to Thursday, and 9 a.m. to 4:30 p.m. on Fridays. It is closed on weekends and holidays.

Visit samu.ca/studentgroups to learn more about the Student Groups Space.



THE GRIFF

We're MacEwan University's student publication. Find our magazine for free on stands around campus!

We cover the latest goings-on around the city centre campus, Edmonton's downtown core, and whatever else matters to MacEwan students. Our team is composed of journalists, writers, and creatives. We try to supply MacEwan with honest reporting, quality media, and good vibes.

The Griff has been around since 2011 as a campus newspaper before becoming a magazine in 2015. We currently print seven issues from September to April, excluding December.

Want to contribute with us? The Griff is open to all students, no experience needed. Find more info about contributing on our website.

Read the news, send news tips, and get ahold of us here:

thegriff.ca
contact@thegriff.ca
780-497-5715

VOLUNTEER OPPORTUNITIES

Volunteering is an easy way to expand your resume, gain experience in your field, network across campus and have a great time with like-minded folks. SAMU offers many different ways to volunteer depending on your interests, skills and availability. We are, however, looking for people with dedication, commitment and at least 10 hours of available time to give per semester.

Getting some volunteer work under your belt can lead to having an excellent reference for future job interviews. It can also open you up to many bursaries and awards that require some serious volunteer hours. For more information and to sign up, visit samu.ca/volunteer.

Volunteer Manager
savolunteer@macewan.ca
samu.ca/volunteer

HEALTH & Wellness

STUDENT BENEFITS PLAN

The Students' Association of MacEwan University - SAMU, provides students with essential programs and services to make sure students have affordable health & wellness coverage.

HEALTH AND DENTAL

Coverage for prescription drugs, dental care, health services, ambulance, paramedical practitioners, mental health experts and more—help with costs your provincial health plan doesn't cover.

Your health plan provides additional coverages such as emergency travel assistance, dental accident, critical illness insurance, tuition insurance, tutorial insurance and accidental death and dismemberment.

PLAN ELIGIBILITY

Students enrolled in at least one university credit-level course within an eligible program are automatically covered by the Student Benefits Plan. To confirm your eligibility, please check your student account to ensure that the Health and Dental Insurance fees have been assessed.

FLEXIBLE PLAN OPTIONS

You can compare plan options offered on the plan website at no additional cost. If you wish to change your coverage limits, you must meet the eligibility requirements and apply before the applicable deadline.

- Balanced Plan
- Paramedical & Vision
- Drugs & Paramedical
- Dental

All students are automatically enrolled in the Balanced Plan, so no application is required for this option. You only need to apply if you wish to select a different coverage option.

Link: <https://www.mystudentplan.ca/macewan/en/mybenefits>

MORE SERVICES DESIGNED TO SUPPORT YOU

MENTAL HEALTH AND WELLNESS

24/7 access to mental health services and resources, providing immediate support whenever you need it.

- Take the first step towards better mental health by completing the anonymous, free mental health assessment
- Receive a free initial 15-minute online counselling consultation
- Benefit from budget-friendly fees for online counselling sessions
- Access financial tools, coaching, and interactive courses to manage your personal finances
- Find supportive organizations in our directory that can offer support when you need it
- 3 hours free counselling

Link: <https://www.mystudentplan.ca/macewan/en/mywellness>

LEGAL CARE PROGRAM

Expert advice on civil legal matters, plus access to dynamic, customizable do-it-yourself legal documents, forms, contracts and more.

- Book a virtual consultation with a legal advisor
- Get a referral for virtual, phone, or in-person consultations with a lawyer
- Access legal research and explanations of legal concepts
- Access do-it-yourself legal documents such as common law partner agreements, purchase agreements, resumes, cover letters, and more
- Use the promo code Mac2024 to register

Link: <https://www.mystudentplan.ca/macewan/en/mylegalplan>

ONLINE APPLICATIONS

Visit the plan website to learn about application deadlines and eligibility criteria.

- Opt-Out: If you are already covered by a comparable Health and Dental Plan
- Family Add-On: If you wish to purchase coverage for your dependents
- Re-Enroll: If you wish to reinstate your student plan

Applications must be submitted online.

Link: <https://www.mystudentplan.ca/macewan/en/forms>

BENEFITS MANAGEMENT PROGRAM

Register on the Benefits Management Platform to access your plan anytime, anywhere, and enjoy a variety of features:

- View the coverage details by category: Drug, Health, and Dental
- Verify if prescriptions are covered by the plan
- Check plan usage and balances remaining
- Get your Benefit Cards for direct billing
- Submit pre-authorization forms and online claims
- Track the status and history of your claims
- Learn about additional insurance options included in the Student Benefits Plan
- Stay informed with notifications and alerts

Complete the registration form. You will need to provide the Group number **(60867)** and your student ID (omitting letters or leading zeros) as the certificate number.

New eligible Students: Please note that you must wait up to 60 days after the term begins to register on the platform. In the meantime, be sure to keep receipts for expenses, as you can submit claims for eligible expenses incurred from the effective date of your plan.

Link: <https://students.onlineclaimsaccess.net/en/register>

Do you still have questions? Visit our website, send us an email, or stop by the SAMU Benefits Plan Office to speak with your Benefits Coordinator.

SAMU Benefit Plan Office

SA-109A, SAMU Building 10850-104 Ave NW

Website: www.mystudentplan.ca/macewan

Email: macewanplan@mystudentplan.ca

Phone: 587-881-2169



BREAKFAST CLUB

SAMU's Breakfast Club offers a free nutritious breakfast for all MacEwan students, because we know that it is hard to operate on an empty stomach. Our pop-up schedule changes each semester—check out our website for our current pop-up times.

| sabreakfastclub@macewan.ca
| samu.ca/breakfastclub

FARMERS' MARKET

Join us for the SAMU Farmers' Market, where you can get a FREE bundle of local, farm-fresh produce! You'll have the opportunity to choose from a variety of options to build a custom bundle that provides you with a basket of produce to use in your home cooking.

HOW IT WORKS

You may choose from a variety of fresh produce items* to build your own bundle:

- Root vegetables such as potatoes and carrots
- Leafy greens, such as lettuce and spinach
- Fruiting vegetables, such as cucumbers and tomatoes

* items are subject to availability; item availability may vary between dates.

* Students must present their valid MacEwan student ID to build and receive a bundle.

SCHEDULE

Please note that the Farmers' Market is available on a first-come, first-served basis (while supplies last). Keep an eye on our SAMU Newsletter or the events page at samu.ca/events for upcoming Farmers' Markets!

PEER SUPPORT

No issue is off limits for SAMU's Peer Support. Our highly trained student volunteers provide a safe and confidential listening service for students to share personal concerns. Volunteers also provide information about a variety of resources at MacEwan and the Edmonton area.

| sapeersupport@macewan.ca
| samu.ca/peersupport

SAFE WALK

Safe Walk volunteers are dedicated to providing clients with safe passage on or around campus by walking with them to their car, transit station, or other nearby destination. We strive to help everyone feel safe and secure at MacEwan through proactive student participation and harm reduction practices.

| sasafewalk@macewan.ca
| samu.ca/safewalk



THE PANTRY

Short on groceries? Add to your cabinets by building a hamper from SAMU's Pantry. The Pantry is entirely confidential, and your hamper can include non-perishable food and/or household items. To begin accessing The Pantry, complete your registration today.

| 780.633.3163
| safoodsupport@macewan.ca
| samu.ca/pantry

SUPPORT HUB

The Support Hub is home to Safe Walk, The Pantry, and Peer Support. Here, students can come to this centralized space to find resources regarding a variety of concerns and pick up safe sex supplies, menstrual products or hygiene items.

| City Centre Campus, SAMU Building, SA-223
| 780.497.5027
| sasupporthub@macewan.ca

FINANCIAL

Supports



SAMU CARES

The SAMU Cares program is a bursary funded by SAMU for MacEwan students in financial need. We provide bursaries that help students and their families with financial assistance in the Fall and Winter terms. The program has grown to assist 60+ families each year and is funded through the efforts of the SAMU community.

We do everything we can to allocate a bursary to every student who applies. The amount of bursary depends on the number of applications and the dollars available.

| samu.ca/financialsupports



PART-TIME EMPLOYMENT

Looking for flexible on-campus work that fits around your MacEwan schedule? SAMU's got you covered! Every year, we hire over 30 students for part-time roles. Regardless of your background or experience, there's a spot for you to grow and gain work experience while completing your education. Think you'd be a great fit? Most part-time roles recruit once a year, with applications opening in early March.

Check out available positions and apply during our annual hiring period at samu.ca/hiring.

STUDENT REFUGEE PROGRAM (SRP)

In partnership with the World University Service of Canada (WUSC), a portion of your SAMU fees goes towards supporting SAMU's Student Refugee Program (SRP). This program funds the tuition and housing of a refugee student for four years. With the help of a Local Committee Group made up of students and staff, SAMU ensures all the sponsored students' needs are met throughout their time at MacEwan.

Learn more about the Student Refugee Program at samu.ca/srp.

★ STUDENT Resources

SAMU STUDENT ADVOCACY CENTRE

Advocacy is important to SAMU. At the Student Advocacy Centre, we empower students to build a foundation of self-advocacy to address their academic or non-academic issues. The Centre provides a confidential and judgment-free space where students can share their situation and receive personalized support.

Types of support that students can access through the Advocacy Centre include information about MacEwan policies and procedures, assistance preparing for meetings or hearings, a silent support for meetings or hearings and help reviewing emails or forms sent to MacEwan.

To receive support from the Student Advocacy Centre, contact us via email at sapss@macewan.ca or through the SAMU website.

U-PASS

The Universal Transit Pass (U-Pass) provides students with affordable transit options for the school term and gives students unlimited regular transit access to Edmonton, St. Albert, Strathcona County, Spruce Grove, Fort Saskatchewan, Leduc and Beaumont Transit systems. To access the U-Pass, a student must be enrolled in an on-campus program, taking at least one on-campus class and assessed the U-Pass fee of \$180/term.

To use your U-Pass:

1. REGISTER an ARC Card* on your myStudentSystem in the fees tile
2. ADD the current term U-pass onto the card **
3. TAP on and off when riding transit
4. REUSE the ARC Card by adding each term U-Pass

* ARC Cards are available at the SAMU Office SA-301 and other retail locations

**Click on the card number to open a U-Pass assessed window. Move the toggle next to the current term to say "yes", accept Terms and Conditions and SAVE

There are three different Term U-Passes with the valid dates as follows:

- Fall Term - August 25 to December 31
- Winter Term - January 1 to April 30
- Spring/Summer Term - April 20 to August 31

For more information on the U-Pass and frequently asked questions, such as terms and conditions, troubleshooting and opt-outs visit samu.ca/u-pass.

HOW TO TALK ★ TO YOUR ★ PROFESSOR *5 Tips*

FOR PRODUCTIVE AND OPEN CONVERSATIONS

TIP 1:

KINDNESS IS KEY

"Treat others the way you wish to be treated." It's an easy concept, but it can go a long way. If you approach the conversation with kindness, you are much more likely to receive kindness in return.

TIP 2:

KEEP IT PROFESSIONAL

Keep your interactions with your professor respectful and professional. Don't be late to meetings, respect their office hours, and remember, "hey man" is not an appropriate way to address your professor in an email.

TIP 3:

COURAGE AND HONESTY

Reaching out for support can be tough and often takes courage. Acknowledging what you need and communicating a realistic timeline helps your professor understand your needs while seeing your commitment to continue your academic journey.

TIP 4:

WORK TOGETHER

Remember that you and your professor share a common goal: your academic success. In order to have a productive conversation, be sure to have an open mind when your professor makes suggestions and be prepared with your own ideas on how you can excel in your studies.

TIP 5:

UTILIZE YOUR SUPPORTS

Besides informal supports such as your peers, SAMU and MacEwan offer a variety of formal supports dedicated to enhancing your student experience. These supports include the SAMU Support Hub, SAMU Student Advocacy Centre and MacEwan Wellness and Psychological Services.

SAMU Student Advocacy Centre: samu.ca/advocacy

SAMU Mental Health Resources: samu.ca/student-resources/health-wellness/mental-health-resources/

Wellness and Psychological Services: macewan.ca/safe-at-macewan/mental-health-counselling/

MACEWAN

Resources

OFFICE OF THE UNIVERSITY REGISTRAR

If you have questions about admissions, enrolment, student records, fees and financial aid or general questions about studying at MacEwan, contact the Office of the University Registrar.

City Centre Campus, Main Floor, Building 7
10700 - 104 Avenue, Edmonton, AB
780.497.5000 • info@macewan.ca
macewan.ca/registrar

COMMUNITY NEST PROGRAM

New to MacEwan? Community Nests help first-year students connect, build friendships and feel part of campus life. Each Community Nest is led by a senior student, known as a Nest Leader, who guides weekly activities and monthly socials that foster a sense of belonging.

Join a Community Nest and start building your campus community today.

Student Life, Rm. 7-112
communitynests@macewan.ca
macewan.ca/communitynests

STUDENT SUCCESS NAVIGATOR

Adjusting to university life can be overwhelming—but you don't have to navigate it alone. Student Success Navigators offer one-on-one support and lead Student Skills Sessions focused on building effective study habits, managing time, reducing procrastination and more.

Connect with a Navigator or attend a session to stay on track and build confidence.

Student Life, Rm. 7-112
studentsuccess@macewan.ca
MacEwan.ca/StudentSuccessNavigators

STUDENT LEADERSHIP & VOLUNTEERING

Looking to build skills, meet new people or give back to the campus community? Get involved through student leadership and volunteer programs like the MacEwan Ambassador Program, Golden Key Honour Society, Emerging Leaders Certificate, Campus Tour Guide Program, New Student Orientation Volunteering and more.

Subscribe to the iVolunteer newsletter or connect with the team to find your fit.

Student Life, Rm. 7-112
ivolunteer@macewan.ca

STUDENT EXPERIENCE RECORD

University is more than lectures and labs—it's also about the experiences that shape your growth. The Student Experience Record (SER) lets you track your involvement outside the classroom and showcase the skills you've gained along the way. It's a great tool for reflecting on your journey and strengthening future job or grad school applications.

SER@macewan.ca
[Macewan.ca/SER](#)

MACEWAN ID

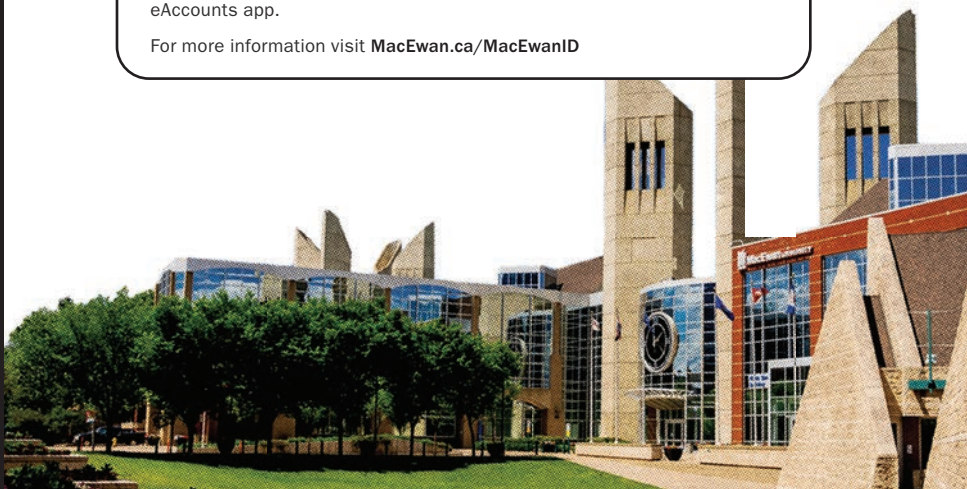
The MacEwan ID is your official University ID and provides access to the John L. Haar Library, Sport and Wellness and campus printers.

To get your MacEwan ID, go to Macewan.ca/MacEwanID to set up MacEwan ID and get tap access from your iPhone, Apple Watch or Android device. If you don't have a smartphone visit the Technology Support desk located at 7-292.

Lost Card or Fraudulent Use

Contact the Technology Support desk at macewanid@macewan.ca or deactivate your mobile MacEwan ID card yourself using the Transact eAccounts app.

For more information visit Macewan.ca/MacEwanID



ACCESS AND DISABILITY RESOURCES (ADR)

If you anticipate, or are experiencing, barriers to learning that are related to a short-term or long-term disability or medical condition, ADR can assist by arranging the accommodations and services you need to remove barriers. We encourage you to schedule a meeting to register with ADR two to four months before the start of term. Our goal is to facilitate the full participation of students with disabilities by sharing information and resources, providing a broad range of services, including access to technology, and recommending academic accommodations for students.

Access and Disability Resources, Rm. 7-166
780.497.5886 • myaccess@macewan.ca
macewan.ca/ADR

Exam accommodations are provided at the **Exam Services Centre**. We support students registered with ADR who encounter barriers with timed assessments, such as in-class essays, quizzes and exams by providing a more accessible environment and implementing exam accommodations.

Exam Services Centre, Rm. 7-198
780.497.4780 • exambooking@macewan.ca
macewan.ca/ExamServicesCentre

STUDENT CONDUCT

The Office of Student Conduct supports a welcoming, positive, and safe learning and working environment for all members of the MacEwan community. Working with students, faculty, and staff, the office investigates and resolves potential policy violations and helps everyone know, understand, and comply with university policies and standards.

Members of the MacEwan community may contact the Office of Student Conduct to discuss situations of potential policy violations, with or without submitting a formal complaint. Formal complaints will be investigated, and appropriate restorative and disciplinary resolutions will be sought.

For more information or to set up a meeting, please contact us and we will be happy to assist you.

Office of Student Conduct, Rm. 7-164
780.633.3422 • studentconduct@macewan.ca
macewan.ca/studentconduct

STUDENT OF CONCERN

The Student of Concern Program works in partnership with campus stakeholders to contribute to the safety and wellbeing of individual students and the broader campus community. Through the provision of support, prevention, and response, the program guides MacEwan students in achieving a meaningful and engaged post-secondary experience.

If you are concerned about another student, please reach out to us. Send an email from your MacEwan email account using "Student of Concern" in the subject line (please do not include names in the subject line of emails), outline the behaviours you have witnessed, and any relevant details such as date, time, and location. If, at any time, there is an emergency or crisis situation, please do not be afraid to call Campus Security (780-497-5555) and/or 911 as appropriate.

780.497.4202

studentofconcern@macewan.ca

ACADEMIC INTEGRITY

We can assist students to identify and avoid academic misconduct, such as plagiarism and improper collaboration. Through our office, students can learn about the values of academic integrity and how they relate to their current studies and future careers. Students can contact the office for more information, or for assistance to understand the process surrounding an instance of academic misconduct.

Academic Integrity Office, Rm. 7-164

780.497.4292 • aio@macewan.ca

macewan.ca/academicintegrity

ACADEMIC ADVISING

Academic Advising is a process where students work with advisors to obtain a solid understanding of what they need to begin, progress through, and complete their educational goals. Academic Advisors support students with admissions and course planning, understanding university policies and procedures relevant to their programs of study, and other academic inquiries related to their programs. When students work with an academic advisor, it is our hope that we empower them with knowledge and support to make their academic decisions.

All students have access to advisors in their programs as well as the Academic Advising Centre. For more information on accessing advising services, visit our website and click on links for Faculty/School Advising for your specific program advising contacts or the link to the Academic Advising Centre.

Academic Advising Centre, Rm. 7-131

advising@macewan.ca

MacEwan.ca/Advising

WELLNESS AND PSYCHOLOGICAL SERVICES

Wellness & Psychological Services (WPS) provides free, confidential mental health services for students enrolled in one or more credit courses at MacEwan. If you are struggling with personal or academic stress and need someone to talk to, we can help support you. The first step is to contact us and request an Initial Consultation to discuss your health and wellness concerns.

WPS also hosts events, workshops and other activities that provide practical strategies on relevant mental health topics. Please visit macewan.ca/counselling for more information on accessing counselling services, to check out online resources, or to find out about the Peer Health Education Team volunteer opportunities.

Wellness & Psychological Services, Rm. 7-103A
780.497.5063 • wps@macewan.ca
macewan.ca/counselling

kihêw waciston

kihêw waciston, which means “eagle’s nest” in nêhiyawewin (Cree), is a home away from home for MacEwan University’s First Nations, Métis, and Inuit students. Here you can gather, work, and grow in a community that honours the distinctive knowledge of Indigenous peoples and supports you on your post-secondary journey. kihêw waciston is a friendly, welcoming place with quiet study space, wellness room, free tutoring, and kitchen facilities.

Students are encouraged to spend time in the Centre to connect with one another, and access resources and student supports. Indigenous student advisors offer comprehensive support in academic program planning, course enrollment, scholarship and funding applications, and navigating the post-secondary environment, while also providing personal support and advocacy. kihêw waciston facilitates recognition and understanding of Indigenous knowledge, culture, and history in the greater campus community through a variety of engaging events throughout the year. It advocates for increased supports for Indigenous initiatives across MacEwan’s campuses and more engaged relationships with Indigenous communities and organizations.

kihêw waciston Indigenous Centre
City Centre Campus, Rm. 9-115
780.497.5382 • kw@macewan.ca
macewan.ca/kw

CAREER SERVICES

Are you uncertain about your career path or future possibilities? Contact the Career Services office to start navigating your career path!

We support guided self-assessment, informed career decision-making, looking for work, preparing for interviews, applying for graduate school, and creating a professional resume and LinkedIn profile through our career appointments, tip sheets, and online resources. Whether you're a first-year student with limited professional experience, a mature student, or alumni looking to make a significant career transition—we're here to help.

We also offer a job board with access to hundreds of vetted employers to support summer jobs, part-time employment, or post-graduation positions. Besides our online job board, we offer career fairs and information sessions where you can meet and interact with employers. Career appointments, events, resources, and job postings are at macewanlife.macewan.ca

Career Services, Rm. 7-121
780.633.3512 • mycareer@macewan.ca
Instagram: [@macewan_cs](https://www.instagram.com/macewan_cs)
Facebook: [facebook.com/MacEwanCS/](https://www.facebook.com/MacEwanCS/)
LinkedIn: [macewan-university-career-services](https://www.linkedin.com/company/macewan-university-career-services)
X: [MacEwan_CS](#)

OFFICE OF RESEARCH SERVICES

At MacEwan University, we value student-engaged scholarship and encourage our students to ask big questions. Our scholarship seeks to answer local and global questions, enrich our city's social and cultural fabric, and provide students with hands-on experiences. You can learn more by visiting MacEwan.ca/Research and looking at the resources and information under the "Student Research" tab.

MacEwan students can be hired by faculty members to work as research assistants, or they can apply for and receive grant funding like the Undergraduate Student Research Initiative (USRI) to conduct their own research and to share their findings with a larger audience at events such as conferences, exhibitions or concerts. MacEwan's annual Student Research Day provides an opportunity for students to develop presentation skills that may support graduate school applications and/or preparation for future careers in academia, the public/private sector, creative industries, and the community. The Office of Research Services, faculty members, and the MacEwan Library all look forward to helping you succeed as an undergraduate researcher.

City Centre Campus, Rm. 7-257
research@macewan.ca
macewan.ca/research

WORK INTEGRATED LEARNING

The Work-Integrated Learning (WIL) team at MacEwan supports students in gaining practical experience through placements and course-based projects that connect classroom learning with community partners. These experiences help students apply their academic knowledge to meaningful challenges, develop essential workplace skills, and build confidence for their future careers. This includes supporting students in developing and articulating transferable skills and competencies like communication, problem-solving, and teamwork. WIL also enables students to explore the breadth of societal and organizational challenges their learning connects to, and from there, the breadth of career pathways they can pursue from their discipline. This helps to develop a sense of professional identity and direction.

As part of facilitating these experiences, the WIL team collaborates with faculty and community partners to design, support, and promote WIL opportunities across a variety of disciplines. Whether you end up working with a non-profit, business, or public organization, the WIL team is here to help guide you through the process—from onboarding to project completion—ensuring a positive and impactful learning experience. These experiences get students directly in front of potential future employers, and allow them to build relationships with, and demonstrate their skills and knowledge to, industry professionals before they even graduate. Let us know if you have any questions or want to learn more about participating in WIL!

I wil@macewan.ca

OFFICE OF SEXUAL VIOLENCE PREVENTION, EDUCATION, AND RESPONSE

The Office of Sexual Violence Prevention, Education, and Response works to create a learning environment free of sexual violence where the university community feels safe and supported.

EDUCATION AND AWARENESS

We provide opportunities throughout the year for you to learn about sexual violence, consent, healthy relationships and how to support someone who has experienced sexual violence.

SUPPORT FOR INDIVIDUALS AFFECTED BY SEXUAL VIOLENCE

Our Sexual Violence Response Coordinator offers free, non-judgmental and confidential support and information to people of all genders affected by sexual violence. We can assist you with accessing resources, academic modifications, reporting options, ongoing support and more. Whether you have experienced sexual violence or are supporting someone else, we are here to listen and support you.

Contact us to learn more about our services or make an appointment.

Office of Sexual Violence Prevention, Education, and Response

Rm. 6-213

780.918.5748 • osvper@macewan.ca

macewan.ca/sexualviolence

Instagram: [@osvper_macewan](https://www.instagram.com/osvper_macewan)

SEXUAL VIOLENCE POLICY

MacEwan's Sexual Violence Policy outlines the university's commitment to addressing sexual violence and your rights and responsibilities as a campus community member. As a MacEwan student, you have the right to:

- A learning environment free of sexual violence
- Receive trauma-informed support after experiencing sexual violence, no matter where or when it occurred
- File a complaint with the university regarding sexual violence that has occurred in the MacEwan environment

All campus community members have the responsibility to engage in consensual and respectful interactions on campus. We all have a role to play in ending sexual violence.

Office of Sexual Violence Prevention, Education, and Response
Rm. 6-213
780.918.5748 • osvper@macewan.ca
macewan.ca/sexualviolence

CHILDCARE ON CAMPUS

Early Learning at MacEwan (ELM) is committed to offering high-quality, supportive childcare for children aged 18 months through five years. ELM provides a creative and safe environment that encourages healthy physical, emotional and social development. The program collaborates with MacEwan University's Early Learning and Child Care program, which supports both staff and students in developing new skills and strengthening professional practices.

City Centre Campus, Rm. 7-153
780.497.5008
macewan.ca/ELM

LIBRARY

MacEwan University Library offers a wide range of resources and services to support students. From the Library website, you can access books, articles, videos and more. Use your MacEwan ID card to borrow materials.

With a large collection of print and online resources, finding what you need can sometimes feel overwhelming. Librarians are available to help with research—visit them in person, book an appointment, or connect through the Library's online chat service.

Other Library services include:

- Quiet study areas and bookable study rooms
- 4-hour loans for required course textbooks
- Lending of laptops, phone chargers, and calculators
- The Makerspace: 3D printing, vinyl cutting, and button making
- The Writing Centre: writing support through in-person and online appointments, workshops, events, and peer feedback
- Computers for student use
- Photocopiers, scanner and printers
- Access to Edmonton Public Library services through the L-Pass program

John L. Haar Library, City Centre Campus, Rm. 7-202
780.497.5850 • library.macewan.ca



**FREE EXTRA
SHOT OF
ESPRESSO
ON MONDAYS!**

**WHEN YOU BUY ANY
ESPRESSO BASED DRINK.**
(AT DEVILLE MACEWAN UNIVERSITY)



DEVILLE™
 COFFEE

**VISIT US IN
THE SAMU BUILDING**

DEVILLECOFFEE.CA | [@DEVILLECOFFEE](https://www.instagram.com/DEVILLECOFFEE)

LOCKER REGISTRATION

Each student has the option to rent a locker through the online system while registered at MacEwan. The cost is \$40 for September-April, or \$20 if just attending one term. Locks must be supplied by the student and can be purchased at the MacEwan Bookstore.

How to get a locker:

- Lockers marked reserved are not available.
- Find an empty locker and put your lock on it.
- Snap a photo of your locker # with your lock on it.
- Immediately following—you need to register & pay for the locker online

Follow the steps that are outlined on the poster affixed to the inside door of every locker on campus.

Go online: myPortal.macewan.ca

- Click Quick Link: Locker Registration.
- Complete all fields for your specific locker number.
- Make the payment with a credit card for the duration of time you are enrolled in classes.

Important tips:

- Do not leave your registered locker without a lock at any time. If you remove your lock, the locker is considered vacated & it will immediately become available for another student to register.
- Without full payment, a locker is not considered registered. Therefore, locks may be cut without notice and the contents donated to a non-profit organization.
- Items left in unregistered or expired lockers will be donated to a non-profit organization after 14 days. There is a \$25.00 fee to reclaim contents within this 14-day period.
- MacEwan University is not responsible for items stored in lockers.
- All payments for locker registrations are final. **No refunds will be given.**

MACEWAN UNIVERSITY HEALTH CENTRE

While enrolled at MacEwan University, you have access to coordinated, comprehensive, team-based health care at the MacEwan University Health Centre. Services at this facility include, but are not limited to, disease prevention, health promotion, mental health services, acute and chronic care needs. This clinic is based on the innovative “Medical Home” model, which gives our student and staff community one-stop access to a spectrum of healthcare professionals. This includes doctors, primary care nurses, mental health professionals, dietitians and kinesiologists. The clinic does not routinely accept walk-ins, so a scheduled appointment is required. Still, all reasonable efforts are made to accommodate urgent concerns on a same-day basis with one of the physicians or allied health staff.

10507 109 St.
780.250.6842
www.muhealth.ca

PRINT SERVICES

Whether you're printing a class assignment, designing promotional materials for a club, or need professional-quality posters and banners—Print Services has you covered. We offer affordable, high-quality printing at student-friendly prices.

With an experienced team, modern equipment and a wide selection of paper types, most print jobs can be completed within 1–3 days. Custom quotes are typically provided within 24–48 hours.

We offer:

- Black and white printing
- Colour printing
- Digital textbook printing
- Coil binding
- Laminating
- Clear report covers
- Posters
- Postcards and flyers
- Brochures
- Banners
- Business cards
- Booklets (folded/stapled)
- Stickers
- Coroplast and foam board signs

HOW TO ORDER

Submit your print job online or visit us in person. Not sure where to start? Need a custom quote or have questions about your project? Our team is happy to help—just stop by, call, or email us.

6-021, Building 6 (parkade level)
780.497.5036 • printservices@macewan.ca
MacEwan.ca/Print

TECHNOLOGY SUPPORT DESK

The Technology Support desk provides many technology-related services and resources, including:

- **Computers and software:** All student-use computers have web access, and many are equipped with software for word processing, graphic image editing, desktop publishing and program-related software. Both Windows and Macintosh machines are available to use.
- **Technology support:** Technology Support staff can assist students with their accounts and answer inquiries about using the technology at MacEwan. Live chat support and additional resources are available for students at helpcentre.macewan.ca
- **MacEwan ID card:** You can set up a digital credential in your phone's wallet or request a physical card from the Technology Support team. This card serves as your campus ID, granting you access to the Sports and Wellness area and enabling quicker sign-in for Library materials and printing while on campus.

City Centre Campus, Rm. 7-292
techsupport@macewan.ca
helpcentre.macewan.ca

TRANSPORTATION SERVICES

Parking permits are available on an hourly, daily or monthly basis depending on the specific parking lot on campus. Parking charges are in effect 24/7. Vehicles with three or more outstanding violations are subject to towing.

APPLY FOR A PARKING PERMIT

Students can purchase parking permits online at macewan.ca/parking. Online payment options include Visa, MasterCard and American Express. Monthly parkers automatically set up a monthly Recurring Payment on the first of every month. Parkade access cards will be available for pick up in the Parking Office. Parking inquiries can also be made in person at the Transportation Services Office within the Bookstore, RM: 6-124.

City Centre Campus, Rm. 6-124

780.497.5875

parking@macewan.ca

macewan.ca/parking

MACEWAN INTERNATIONAL

MacEwan International provides global learning opportunities for the university community and has expertise in international education systems and partnerships, mobility trends, integration and Canadian immigration legislation.

We advise and support students who want to study or work abroad and offer a variety of education abroad programs that fit academic and personal goals.

We also advise and support international students in achieving their academic and immigration goals here in Canada. They can contact us about university programs and registration, student and immigration-related services and documents, travel protocols or adjusting to life in a new community.

City Centre Campus, Rm. 7-105

780.497.5397 • international@macewan.ca

macewan.ca/international

macewan.ca/educationabroad

MACEWAN UNIVERSITY ALUMNI OFFICE

Alumni are MacEwan's greatest legacy!

When you graduate, you'll join a community of over 90,000 MacEwan alumni, become the next wave of inspiration to students following in your footsteps and be a source of pride for your program and alma mater.

Until then, good luck! Study hard and make the most of your university experience – we are cheering for you and are excited to welcome you when you cross that finish line!

For a full listing of services available after graduation, visit MacEwan.ca/Alumni.

City Centre Campus, Rm. 10-600, University Service Centre
780.497.4273 • alumni@macewan.ca
macewan.ca/alumni



the switch

at Station Lands

STUDIO 1, 2, AND 3 BEDROOM RENTALS

Call us today at **780.217.3065**
and quote the code **SWITCH04**

- Pet-Friendly Building
- 24-Hour Security
- Close Proximity to Transit
- Main Floor Retail
- Smart Parcel Room
- Public Plaza... and More!

Ask us about our **RENTAL INCENTIVES!** Book a tour today ➔ switchyeg.com



Modern Suites



Extraordinary Amenities

MACEWAN UNIVERSITY SPORT AND WELLNESS

If you're taking one or more credit courses at MacEwan, your Sport and Wellness membership is included in your term fees—giving you full access to our top-tier fitness, aquatics and recreation facilities.

What's included in your membership:

- Unlimited access to the fitness centre, pool and gymnasium
- Free drop-in classes like spin, cardio, bootcamp, strength training, water fitness and swim training
- Discounted rates on rec leagues, personal training, fitness testing, swim lessons and most registered courses

To access the facility, scan your MacEwan student ID at the front desk.

FIT BUDDY PROGRAM

New to the gym? No problem. The Fit Buddy Program pairs you with a fellow student who knows their way around. Over a few casual sessions, they'll show you around, help you get comfortable with the equipment and work out with you.

REC LEAGUES

Grab your friends or sign up solo and we'll match you with a team. Whether you're a seasoned player or just starting out and want to try a new sport, rec leagues are an awesome way to stay active and meet people. Sports change each term but usually include:

- Badminton
- Dodgeball
- Indoor Soccer
- Volleyball
- Basketball
- Floor Hockey
- Pickleball

Our rec team also hosts events each term that bring the energy, competition, and fun—like volleyball, basketball, and pickleball tournaments, trivia nights and league socials.

SPORT CLUBS

Led by students, for students—Sport Clubs are all about learning new skills, building community, and connecting with people who share your interests—without the pressure of competition. Clubs vary by term based on student interest, but in the past, we've had jiu-jitsu, cheer, barbell, swim, climbing, dragon boat racing and more.

AQUATICS

Take a break and hit the pool! Your membership includes lane swim, rec swim, monthly WIBIT inflatable obstacle course events, and drop-in classes like Coached Swim Training and Learn to Swim. You can also sign up for swim lessons and first aid and aquatic certification courses at student-friendly rates.

PROGRAMS, SCHEDULES & UPDATES

Explore programs, check schedules, and register at

SportAndWellness.MacEwan.ca.

For the latest news, events and contests, follow @MacEwanWellness on Instagram, Facebook and TikTok.

8-121, Christenson Family Centre for Sport and Wellness
780.497.5300 • welcomedesk@macewan.ca
SportAndWellness.MacEwan.ca

MACEWAN UNIVERSITY ATHLETICS

Welcome to GRIFF NATION!

MacEwan University's women's and men's athletic teams compete in basketball, hockey, soccer and volleyball in the Canada West Universities Athletic Association under the U SPORTS umbrella.

Our women's soccer team are the 2021 U SPORTS national champions!

Throughout the 2024-25 season, the Griffins will host numerous special events, so visit macewangriffs.ca for a complete list of dates and details. Show your university pride by wearing maroon and coming out and cheering on your Griffins to victory.

On game day, MacEwan students get in to see the action for FREE through Showpass! Students can use their free tickets once events become available in July. To use a free ticket, visit showpass.com/o/macewangriffs, then select the MacEwan Student ticket in the ticket options and enter your myMacEwan email when prompted. Tickets sent to non-myMacEwan email addresses will be canceled.

Visit our website for schedules, scores, features and much, much more. For the latest news, contests and job postings, follow @MacEwanGriffins on Facebook, Instagram and Twitter.

GO GRIFFS GO!

I Macewangriffs.ca

THE CENTRE FOR SEXUAL & GENDER DIVERSITY

The Centre for Sexual and Gender Diversity serves members of the MacEwan community—students, faculty and staff. We can answer your questions about sexual and gender minority topics and support your ideas for initiatives that increase knowledge about and bring visibility to the 2SLGBTQ+ community. Join us for Pride week in March, check out one of our events or drop by CSGD for some of our ongoing programming like: Common Room with drop-in social time, 2SLGBTQ+ resources and student support. We also provide: 2SLGBTQ+ programming throughout campus; sexual health programming (and supplies); classroom & faculty support; workshops & resources; social & educational events; collaborative projects; volunteer opportunities; scholarships & bursaries; and the Rainbow Health Clinic at the MacEwan University Health Centre.

City Centre Campus, Roundhouse

11-190, Allard Hall

11110 - 104 Avenue, Edmonton, AB

csgd@macewan.ca

macewan.ca/CSGD

@CSGDMacEwan on FB, IG and Twitter

OFFICE OF HUMAN RIGHTS

At MacEwan University, we welcome everyone. We respect human rights, celebrate diversity and embrace equity and inclusion. We build human rights champions who influence our community both within and beyond the university's walls. The Office of Human Rights works with students, staff and faculty to build a campus that is free from discrimination. We can answer your questions about human rights policies, explore your ideas for initiatives that promote diversity and offer volunteer opportunities. If you have experienced discrimination on campus, we can guide and support you.

MACEWAN CHAMPIONS OF DIVERSITY AND EQUITY (CODE)

The Champions of Diversity and Equity (C.O.D.E.) training initiative focuses on creating a space and culture for dialogue, learning, reflection and action on human rights. When you participate in C.O.D.E. training, you explore the theory and practice of human rights. You gain skills in facilitating dialogue and conversations on critical human rights issues. You deepen your understanding and practice of allyship, solidarity and witnessing as basic tools to claim human rights and develop skills to become educators and advocates on human rights issues. C.O.D.E. training is open to all current MacEwan students: full and part-time, International and exchange, continuing education, English as an additional language and university preparation. Check the website for registration dates!

GET INVOLVED

Interested in getting involved in human rights work on campus? Join us for different events, workshops, collaboration projects, and volunteer opportunities throughout the year! Follow our website or your student portal to learn more about what's going on every month and how you can be part of the drive to create a more supportive MacEwan.

Office of Human Rights, Rm. 6-213

780.633.3709 • humanrights@macewan.ca

macewan.ca/humanrights

Insuring today.
Ensuring tomorrow.

mystudentplan is becoming

ALUMO



CONFIDENCE LINE

If you have experienced or witnessed unwanted, uncomfortable or unethical behaviour, one option is to report your concerns to the Confidence Line. We will listen to you, protect your anonymity and direct you to the MacEwan service that can help you best. Phone 1-800-661-9675 or go to <https://macewan.confidenceline.com/>.

C.H.A.R.M.

The Coalition for Harm Reduction at MacEwan (CHARM) is a collaboration between campus and community members with common goals to support the MacEwan University community through a coordinated harm reduction approach. A harm reduction approach aims to reduce the potential negative consequences of higher-risk environments or higher-risk behaviours without necessarily reducing the behaviour itself.

CHARM's objectives include sharing resources, offering connection-based programming, facilitating training, and raising awareness.

! <https://sites.macewan.ca/charm/>

See something, say something.

Call or text Transit Watch:

780-442-4900

In an emergency, call 911



Transit Watch 
edmonton.ca/ETSsafety

Edmonton
Transit
Service

Edmonton

Faculty Listings

Faculty of Arts & Science

MacEwan University City Centre Campus, Rm. 7-310
10700 - 104 Ave Edmonton, AB T5J 4S2

Phone: 780.497.4505

Email: artsandscience@macewan.ca

Website: macewan.ca/academics/faculties-schools/faculty-of-arts-science/

Faculty of Fine Arts & Communications

MacEwan University Allard Hall, Rm. 11-415
11110 - 104 Ave Edmonton, AB T5J 4S2

Phone: 780.497.4450

Email: FFACAdmin@macewan.ca

Website: macewan.ca/academics/faculties-schools/faculty-of-fine-arts-communications/

Faculty of Health & Community Studies

MacEwan University Robbins Health Learning Centre, Rm. 9-407
10910 - 104 Ave Edmonton, AB T5J 4S2

Phone: 780.497.4553

Email: hcsdeansoffice@macewan.ca

Website: macewan.ca/academics/faculties-schools/faculty-of-health-community-studies/

Faculty of Nursing

MacEwan University Robbins Health Learning Centre, Rm. 9-511
10910 - 104 Ave Edmonton, AB T5J 4S2

Phone: 780.497.5152

Email: nursingdeansoffice@macewan.ca

Website: macewan.ca/academics/faculties-schools/faculty-of-nursing/

School of Business

MacEwan University City Centre Campus, Rm. 5-238
10700 - 104 Ave Edmonton, AB T5J 4S2

Phone: 780.497.5162

Email: business@macewan.ca

Website: macewan.ca/academics/faculties-schools/school-of-business/

School of Continuing Education

MacEwan University Allard Hall, Rm. 11-521
11110 - 104 Ave Edmonton, AB T5J 4S2

Phone: 780.497.4400

Email: sce@macewan.ca

Website: macewan.ca/academics/faculties-schools/school-of-continuing-education/

Tutoring Resources

Writing Centre

WritingCentre@MacEwan.ca
library.macewan.ca/writing-centre

Math & Stats Online Learning Centre

mathandstats@macewan.ca
780-497-5786
www.macewan.ca/academics/academic-departments/mathematics-statistics/academics/math-stats-learning-centre

The Churchill Apartments



Big Space. Bold Style. Downtown Living.

Renovated 1 & 2 bedroom suites just steps from the ICE District. Featuring modern finishes, in-suite laundry, and standout amenities like a rooftop patio, fitness centre, and billiards lounge.

Exclusive leasing offers available, call for details.

📞 825.535.3960 | Quote: CHURCHILL25 to book your tour.
📍 10015 103 Avenue NW, Edmonton AB

SCAN





\$5.99 STEINS

MONDAY - FRIDAY

OPEN - 7PM

LOCATED IN THE ICE DISTRICT

thecanadianicehouse.com



The
BANQUET



WING TUESDAYS!

69¢ WINGS 4PM - CLOSE

LATE NIGHT HAPPY HOUR

SUNDAY - THURSDAY | 9PM - CLOSE

**DEEP DISCOUNTS
ON SELECT FOOD & DRINK!**

FIND US IN THE ICE DISTRICT

thebanquetbar.com



THE
CANADIAN
BREWHOUSE

Get

FREE

Garlic Fingers

WHEN YOU SIGN UP FOR THE APP!





★ FALL ★ SEMESTER



SEP-DEC
2025





Pay less in the prime of your life.

Adults 19-24 get 6 months for \$0



Join Prime Today
amazon.ca/prime



New members only

MY CLASS SCHEDULE

MON.	TUE.	WED.	THU.	FRI.	
					8 a.m.
					9 a.m.
					9:30 a.m.
					10 a.m.
					11 a.m.
					12 p.m.
					12:30 p.m.
					1 p.m.
					2 p.m.
					3 p.m.
					3:30 p.m.
					4 p.m.
					5 p.m.
					6 p.m.
					6:30 p.m.
					7 p.m.
					8 p.m.
					9 p.m.



SEPTEMBER

SUN.	MON.	TUE.	WED.
	1 Labour Day University Closed	2 Meet SAMU Week New Student Orientation Students' Council Election: Nominations Open	3 Meet SAMU Week Meet SAMU Expo Regular Session Classes Begin
7	8 Student Groups Orientation	9 Introduction to Student Groups Students Removed From Waitlists	10 Student Groups Fall Expo
14	15 Student Leadership Week Last Day to Apply for Fall Convocation	16 Student Leadership Week	17 Student Leadership Week Students' Council Meeting
21	22 Maker Series	23	24 University 101
28	29 Student Benefits Fee Opt-Out Deadline Deadline for Payment of Regular Session Tuition and Fees	30 National Day of Truth and Reconciliation No Regular Session classes Fall Term U-Pass Fee Opt-Out Deadline	

AUGUST							OCTOBER						
S	M	T	W	T	F	S	S	M	T	W	T	F	S
					1	2				1	2	3	4
3	4	5	6	7	8	9	5	6	7	8	9	10	11
10	11	12	13	14	15	16	12	13	14	15	16	17	18
17	18	19	20	21	22	23	19	20	21	22	23	24	25
24	25	26	27	28	29	30	26	27	28	29	30	31	
31													

THU.	FRI.	SAT.
4 Meet SAMU Week Student Groups Orientation	5 Meet SAMU Week Fall Fest Waitlists Closed	6
11 Student Groups Fall Expo	12 Last Day to Add or Drop Regular Session Classes	13
18 Student Leadership Week	19	20
25 Breakfast Club	26	27

Some dates may be
subject to change
after publication.
To see the full SAMU
events calendar visit:



NOTES

SUNDAY

31

MONDAY

01

Labour Day
University Closed

TUESDAY

02

Meet SAMU Week
New Student Orientation
Students' Council
Election: Nominations
Open

WEDNESDAY

03

Meet SAMU Week
Meet SAMU Expo
Regular Session
Classes Begin

THURSDAY

04

Meet SAMU Week
Student Groups
Orientation

FRIDAY

05

Meet SAMU Week
Fall Fest
Waitlists Closed

SATURDAY

06

NOTES**SUNDAY****07****MONDAY****08**

Student Groups
Orientation

TUESDAY**09**

Introduction to
Student Groups
Students Removed
From Waitlists

WEDNESDAY**10**

Student Groups
Fall Expo

THURSDAY**11**

Student Groups
Fall Expo

FRIDAY**12**

Last Day to Add
or Drop Regular
Session Classes

SATURDAY**13**

NOTES

SUNDAY

14

MONDAY

15

Student Leadership
Week
Last Day to Apply for
Fall Convocation

TUESDAY

16

Student Leadership
Week

WEDNESDAY

17

Student Leadership
Week
Students' Council
Meeting

THURSDAY

18

Student Leadership
Week

FRIDAY

19

SATURDAY

20

NOTES

SUNDAY

21

MONDAY

22

Maker Series

TUESDAY

23

WEDNESDAY

24

University 101

THURSDAY

25

Breakfast Club

FRIDAY

26

SATURDAY

27

MONDAY

29

Student Benefits Fee
Opt-Out Deadline

Deadline for Payment
of Regular Session
Tuition and Fees

TUESDAY

30

National Day of Truth
and Reconciliation
No Regular Session
classes

Fall Term U-Pass Fee
Opt-Out Deadline



FALL EVENTS CALENDAR 2025

MEET SAMU WEEK
SEPT 2-5

MAKER SERIES
MON, SEPT 22 · MON, OCT 20
MON, NOV 24

DIRTY SEXY BINGO
WED & THURS, OCT 15 & 16

**TOWERS OF TERROR
TRIVIA NIGHT**
THURS, OCT 30

HOLIDAY MARKET
DEC 2-4

FALL FEST
FRI, SEPT 5

**SAMU CINEMA
OUTDOORS**
THURS, OCT 2

**SAMU CINEMA SERIES:
ROCKY HORROR
PICTURE SHOW**
WED, OCT 29

SAMU SILENT DISCO
FRI, NOV 21

SEE THE FULL EVENTS CALENDAR AT [SAMU.CA/EVENTS](https://samu.ca/events)
CALENDAR DATES MAY BE SUBJECT TO CHANGE.

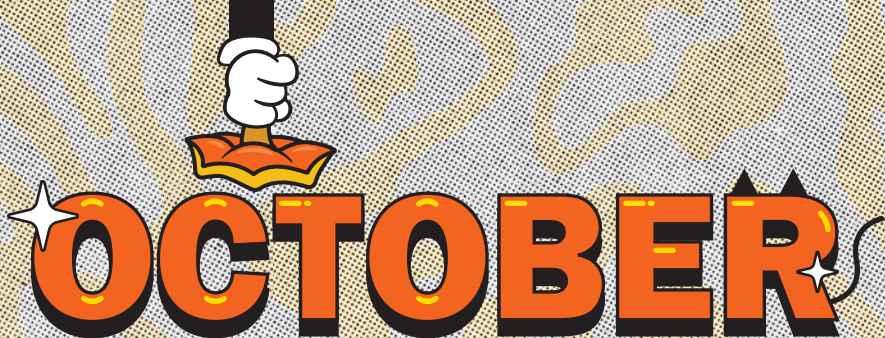
NOTES

A grid of 20 columns and 15 rows of dots for taking notes.



MacEwan's student
World's greatest magazine.

Find it on stands around campus and @ thegriff.ca
Student contributors are welcome.



OCTOBER

SUN.	MON.	TUE.	WED.
			1 Students' Council Election: Nominations Close
5	6 Consent Action Week	7 Consent Action Week Students' Council Election: Campaigning Begins Students' Council Election: Candidate Tabling SAMU Cooks	8 Consent Action Week Students' Council Elections: Candidate Tabling SAMU Cooks Student Groups Mingler
12	13 Thanksgiving Day University Closed	14 Students' Council Election: Voting	15 Students' Council Election: Voting Dirty Sexy Bingo Students' Council Meeting
19	20 Maker Series	21	22 Student Groups Workshop
26	27	28	29 SAMU Cinema Series (Halloween)

SEPTEMBER							NOVEMBER						
S	M	T	W	T	F	S	S	M	T	W	T	F	S
	1	2	3	4	5	6							1
7	8	9	10	11	12	13	2	3	4	5	6	7	8
14	15	16	17	18	19	20	9	10	11	12	13	14	15
21	22	23	24	25	26	27	16	17	18	19	20	21	22
28	29	30					23	24	25	26	27	28	29
							30						

THU.	FRI.	SAT.
2 Breakfast Club SAMU Outdoor Cinema	3	4
9 Consent Action Week Breakfast Club Students' Council Election: Candidate Tabling	10 Consent Action Week	11 Campus Clash Elks Game
16 Breakfast Club Dirty Sexy Bingo	17	18
23 Breakfast Club	24	25
30 Breakfast Club Towers of Terror Trivia Night	31	

Some dates may be subject to change after publication. To see the full SAMU events calendar visit:



NOTES

SUNDAY

28

MONDAY

29

TUESDAY

30

WEDNESDAY

01

Students' Council
Election: Nominations
Close

THURSDAY

02

Breakfast Club
SAMU Outdoor
Cinema

FRIDAY

03

SATURDAY

04

NOTES

SUNDAY

05

MONDAY

06

Consent Action Week

TUESDAY

07

Consent Action Week
Students' Council Election:
Campaigning Begins
Students' Council Election:
Candidate Tabling
SAMU Cooks

WEDNESDAY

08

Consent Action Week
Students' Council Election:
Candidate Tabling
SAMU Cooks
Student Groups Mingler

THURSDAY

09

Consent Action Week
Breakfast Club
Students' Council Election:
Candidate Tabling

FRIDAY

10

Consent Action Week

SATURDAY

11

Campus Clash
Elks Game

NOTES

SUNDAY

12

MONDAY

13

TUESDAY

14

Students' Council
Election: Voting

WEDNESDAY

15

Students' Council
Election: Voting
Dirty Sexy Bingo
Students' Council
Meeting

THURSDAY

16

Breakfast Club
Dirty Sexy Bingo

FRIDAY

17

SATURDAY

18

NOTES

SUNDAY

19

MONDAY

20

Maker Series

TUESDAY

21

WEDNESDAY

22

Student Groups Workshop

THURSDAY

23

FRIDAY

24

SATURDAY

25

NOTES

SUNDAY

26

MONDAY

27

TUESDAY

28

WEDNESDAY

29

SAMU Cinema Series
(Halloween)

THURSDAY

30

Breakfast Club
Towers of Terror Trivia
Night

FRIDAY

31

SATURDAY

01

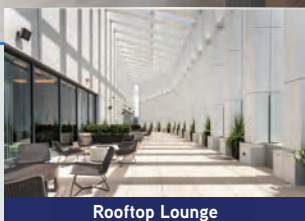
THE PARKS

ELEVATED LIVING IN EDMONTON'S EDUCATION DISTRICT

Sky Lounge



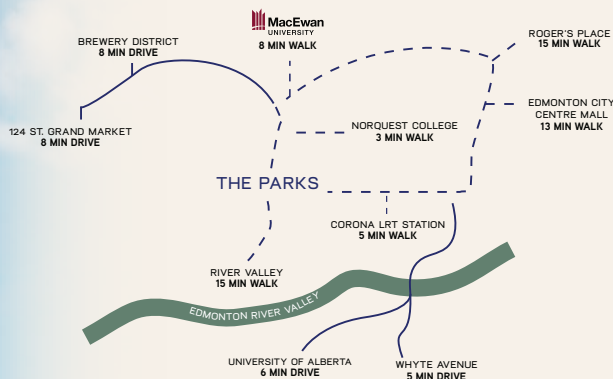
Studio, 1, 2 & 3 Bedroom Suites



Rooftop Lounge



24HR Wellness Studio



- Fully equipped fitness centre
- Pet-friendly community
- Rooftop lounge
- 36th floor chef's kitchen
- Co-working areas & social lounges
- Concierge service
- On-site security
- Secure bike and personal storage
- Underground resident parking
- Curated events and resident experiences

Learn more about **EXCLUSIVE PRICING**
for MacEwan Students
Move-in Today



livetheparks.com/macewan
+1 587-410-4226



NOVEMBER

SUN.	MON.	TUE.	WED.
2	3	4	5
9	10 Reading Break No Regular Session Classes	11 Reading Break No Regular Session Classes Remembrance Day University Closed	12 Reading Break No Regular Session Classes
16	17 National Addictions Awareness Week	18 National Addictions Awareness Week Fall Convocation	19 National Addictions Awareness Week Students' Council Meeting
23	24 Maker Series	25	26 Student Groups Mingler Grad Photos
30			

OCTOBER							DECEMBER						
S	M	T	W	T	F	S	S	M	T	W	T	F	S
			1	2	3	4		1	2	3	4	5	6
5	6	7	8	9	10	11	7	8	9	10	11	12	13
12	13	14	15	16	17	18	14	15	16	17	18	19	20
19	20	21	22	23	24	25	21	22	23	24	25	26	27
26	27	28	29	30	31		28	29	30	31			

THU.	FRI.	SAT.
		1
6 Breakfast Club Student Groups Workshop	7	8
13 Reading Break No Regular Session Classes	14 Reading Break No Regular Session Classes	15
20 National Addictions Awareness Week Breakfast Club	21 National Addictions Awareness Week SAMU Silent Disco	22
27 Breakfast Club Grad Photos	28 Grad Photos	29

Some dates may be
subject to change
after publication.
To see the full SAMU
events calendar visit:





FIND YOUR PEOPLE

STUDENT GROUPS

There are over 100 student groups with unique interests and causes. There's something for everyone!

We're proud to welcome groups of all types:

Political & Social Causes • Academic

Religious & Spiritual • Special Interest

Find your people today by browsing our group listing at samu.ca/groups-listing

WEDNESDAY

29

THURSDAY

30

FRIDAY

31

SATURDAY

01

NOTES

SUNDAY

02

MONDAY

03

TUESDAY

04

WEDNESDAY

05

THURSDAY

06

Breakfast Club
Student Groups Workshop

FRIDAY

07

SATURDAY

08

NOTES

SUNDAY

09

MONDAY

10

Reading Break
No Regular Session Classes

TUESDAY

11

Reading Break
No Regular Session
Classes
Remembrance Day
University Closed

WEDNESDAY

12

Reading Break
No Regular Session
Classes

THURSDAY

13

Reading Break
No Regular Session
Classes

FRIDAY

14

Reading Break
No Regular Session
Classes

SATURDAY

15

NOTES

SUNDAY

16

MONDAY

17

National Addictions
Awareness Week

TUESDAY

18

National Addictions
Awareness Week
Fall Convocation

WEDNESDAY

19

National Addictions
Awareness Week
Students' Council Meeting

THURSDAY

20

National Addictions
Awareness Week
Breakfast Club

FRIDAY

21

National Addictions
Awareness Week
SAMU Silent Disco

SATURDAY

22

NOTES

SUNDAY

23

MONDAY

24

Maker Series

TUESDAY

25

WEDNESDAY

26

Student Groups Mingler
Grad Photos

THURSDAY

27

Breakfast Club
Grad Photos

FRIDAY

28

Grad Photos

SATURDAY

29

NOTES

SUNDAY
30

MONDAY
01

TUESDAY
02



STUDENT ADVOCACY CENTRE

YOUR ADVOCACY PARTNERS

HERE'S HOW WE DO IT:

- Individual Student Advocacy and Policy Support
- Academic and non-academic support
- Referrals for MacEwan and Community Resources

Our team is here to support you.
Access our resources at samu.ca/advocacy



DECEMBER

SUN.	MON.	TUE.	WED.
	1 Grad Photos	2 Holiday Market Grad Photos	3 Holiday Market Grad Photos
7	8	9 Safe Walk Closes Last Day of Classes Last Day to Withdraw From Regular Session Classes Without Academic Penalty	10
14 Final Exams	15 Final Exams	16 Final Exams	17 Students' Council Meeting Final Exams
21	22 SAMU Closed	23 SAMU Closed	24 SAMU Closed Session Grades Due
28 University Closed SAMU Closed	29 University Closed SAMU Closed	30 University Closed SAMU Closed	31 University Closed SAMU Closed Fall Term U-Pass Becomes Invalid

NOVEMBER							JANUARY						
S	M	T	W	T	F	S	S	M	T	W	T	F	S
						1					1	2	3
2	3	4	5	6	7	8	4	5	6	7	8	9	10
9	10	11	12	13	14	15	11	12	13	14	15	16	17
16	17	18	19	20	21	22	18	19	20	21	22	23	24
23	24	25	26	27	28	29	25	26	27	28	29	30	31
30													

THU.	FRI.	SAT.
4 Holiday Market Breakfast Club: Hot Breakfast Grad Photos	5 Grad Photos	6
11 Final Exams	12 Final Exams	13 Final Exams
18 Final Exams	19 Final Exams	20
25 Christmas Day University Closed SAMU Closed	26 University Closed SAMU Closed	27 University Closed SAMU Closed

Some dates may be
 subject to change
 after publication.
 To see the full SAMU
 events calendar visit:



NOTES

SUNDAY
30

MONDAY
01
Grad Photos

TUESDAY
02
Holiday Market
Grad Photos

WEDNESDAY
03
Holiday Market
Grad Photos

THURSDAY
04
Holiday Market
Breakfast Club:
Hot Breakfast
Grad Photos

FRIDAY
05
Grad Photos

SATURDAY
06

07

MONDAY

08

TUESDAY

09

Safe Walk Closes
Last Day of Classes
Last Day to Withdraw From
Regular Session Classes
Without Academic Penalty

WEDNESDAY

10

THURSDAY

11

Final Exams

FRIDAY

12

Final Exams

SATURDAY

13

Final Exams

NOTES

SUNDAY

14

Final Exams

MONDAY

15

Final Exams

TUESDAY

16

Final Exams

WEDNESDAY

17

Students' Council Meeting

Final Exams

THURSDAY

18

Final Exams

FRIDAY

19

Final Exams

SATURDAY

20

21

MONDAY

22

SAMU Closed

TUESDAY

23

SAMU Closed

WEDNESDAY

24

SAMU Closed
Session Grades Due

THURSDAY

25

Christmas Day
University Closed
SAMU Closed

FRIDAY

26

University Closed
SAMU Closed

SATURDAY

27

University Closed
SAMU Closed

NOTES

SUNDAY

28

University Closed
SAMU Closed

MONDAY

29

University Closed
SAMU Closed

TUESDAY

30

University Closed
SAMU Closed

WEDNESDAY

31

University Closed
SAMU Closed

THURSDAY

01

FRIDAY

02

SATURDAY

03

NOTES

MACEWAN BOOKSTORE

Find out how to save
10% or more on
digital textbooks by
scanning below!



★ WINTER ★ SEMESTER



JAN-APR
2026





THE PANTRY

You can build a hamper with
non-perishable food to
supplement your groceries.

samu.ca/thepantry



ADD TO YOUR CABINETS



IT'S OKAY TO NOT BE OKAY LET'S CHAT



PEER SUPPORT

Chat with a trained peer
about what's going on for
you in-person or online.

samu.ca/peersupport



SAFE WALK

We work to promote safety
on campus by walking with
you to a nearby destination.

samu.ca/safewalk



LET'S WALK TOGETHER



FARMERS' MARKET



FREE PRODUCE!

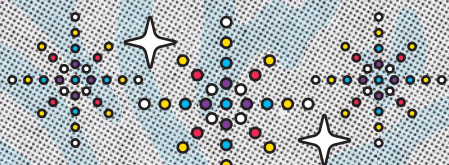
Build a custom bundle of seasonal
fresh fruits and vegetables from a
variety of choices.

SAMU.CA/FARMERSMARKET



MY CLASS SCHEDULE

MON.	TUE.	WED.	THU.	FRI.	
					8 a.m.
					9 a.m.
					9:30 a.m.
					10 a.m.
					11 a.m.
					12 p.m.
					12:30 p.m.
					1 p.m.
					2 p.m.
					3 p.m.
					3:30 p.m.
					4 p.m.
					5 p.m.
					6 p.m.
					6:30 p.m.
					7 p.m.
					8 p.m.
					9 p.m.



JANUARY

SUN.	MON.	TUE.	WED.
4	5 Meet SAMU Week Meet SAMU Expo Regular Session Classes Begin	6 Meet SAMU Week	7 Meet SAMU Week Waitlists Closed
11	12	13 Student Groups Expo	14 Student Groups Expo Last day to add or drop Regular Session classes
18	19	20	21 Students' Council Meeting
25	26 Executive Committee Election: Nominations Open Splash and Bash: Ticket Pickup	27 Splash and Bash: Ticket Pickup	28 Student Groups Workshop Splash and Bash: Ticket Pickup

DECEMBER							FEBRUARY						
S	M	T	W	T	F	S	S	M	T	W	T	F	S
	1	2	3	4	5	6	1	2	3	4	5	6	7
7	8	9	10	11	12	13	8	9	10	11	12	13	14
14	15	16	17	18	19	20	15	16	17	18	19	20	21
21	22	23	24	25	26	27	22	23	24	25	26	27	28
28	29	30	31										

THU.	FRI.	SAT.
1 New Year's Day University Closed SAMU Closed Winter U-Pass Becomes Valid	2 Meet SAMU Week New Student Orientation	3
8 Meet SAMU Week	9 Meet SAMU Week SAMU's Battle of the Bands Students Removed From Waitlists	10
15 Major/Minor Declarations (Competitive)	16 Winter Fest	17
22	23	24
29 Breakfast Club Splash and Bash: Ticket Pickup	30 Splash and Bash Splash and Bash: Ticket Pickup Winter Term Student Benefits Plan Fee Opt- Out Deadline For New Students Only Deadline for Payment of Regular Session Tuition and Fees	31 Winter U-Pass Fee Opt-Out Deadline

Some dates may be
subject to change
after publication.
To see the full SAMU
events calendar visit:





WINTER EVENTS CALENDAR 2026

MEET SAMU WEEK
JAN 2-9

BATTLE OF THE BANDS
FRI, JAN 9

WINTER FEST
FRI, JAN 16

**SPLASH 'N BASH
AT THE WATERPARK**
FRI, JAN 30

MAKER SERIES
WED, FEB 12 · THURS, FEB 13
MON, MAR 23

**SAMU LIVE
COMEDY SHOW**
FEB 26 & APR 2

DIRTY SEXY BINGO
THURS, MAR 12

SPRING MARKET
MAR 17-19

SEE THE FULL EVENTS CALENDAR AT [SAMU.CA/EVENTS](https://samu.ca/events)
CALENDAR DATES MAY BE SUBJECT TO CHANGE.

WEDNESDAY

31

THURSDAY

01

New Year's Day
University Closed
SAMU Closed

Winter U-Pass
Becomes Valid

FRIDAY

02

Meet SAMU Week
New Student
Orientation

SATURDAY

03

NOTES

SUNDAY

04

MONDAY

05

Meet SAMU Week
Meet SAMU Expo
Regular Session
Classes Begin

TUESDAY

06

Meet SAMU Week

WEDNESDAY

07

Meet SAMU Week
Waitlists Closed

THURSDAY

08

Meet SAMU Week

FRIDAY

09

Meet SAMU Week
SAMU's Battle of the
Bands
Students Removed
From Waitlists

SATURDAY

10

NOTES

SUNDAY

11

MONDAY

12

TUESDAY

13

Student Groups Expo

WEDNESDAY

14

Student Groups Expo

Last day to add or
drop Regular Session
classes

THURSDAY

15Major/Minor
Declarations
(Competitive)

FRIDAY

16

Winter Fest

SATURDAY

17

NOTES

SUNDAY

18

MONDAY

19

TUESDAY

20

WEDNESDAY

21

Students' Council Meeting

THURSDAY

22

FRIDAY

23

SATURDAY

24

NOTES

SUNDAY

25

MONDAY

26

Executive Committee
Election: Nominations
Open
Splash and Bash:
Ticket Pickup

TUESDAY

27

Splash and Bash:
Ticket Pickup

WEDNESDAY

28

Student Groups
Workshop
Splash and Bash:
Ticket Pickup

THURSDAY

29

Breakfast Club
Splash and Bash:
Ticket Pickup

FRIDAY

30

Splash and Bash
Splash and Bash:
Ticket Pickup
Winter Term Student
Benefits Plan Fee Opt-
Out Deadline
For New Students Only
Deadline for Payment
of Regular Session
Tuition and Fees

SATURDAY

31

Winter U-Pass Fee Opt-
Out Deadline

NOTES

A large grid of dots for taking notes, consisting of 20 rows and 20 columns.

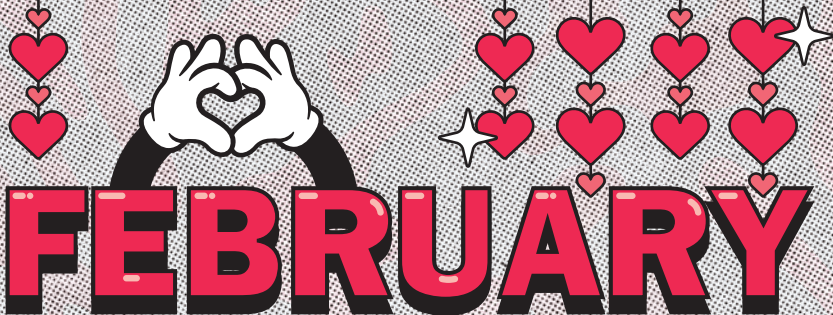


bgc Big Brothers Big Sisters
BGCBigS.ca
Edmonton & Area

- Strength-based training
- Letters of reference
- Real-world experience
- Build your resume



**BECOME A VOLUNTEER TUTOR TODAY
MAKE REAL CHANGE FOR TOMORROW**
BGCBigS.ca/volunteer



SUN.	MON.	TUE.	WED.
1	2 Student Leadership Week	3 Student Leadership Week	4 Student Leadership Week Student Groups Mingler
8	9	10 Student Groups Workshop Major/Minor Declarations (Non-Competitive)	11
15	16 Family Day University Closed	17 Reading Break No Regular Session Classes	18 Reading Break No Regular Session Classes Students' Council Meeting
22	23	24 Executive Committee Election: Nominations Close	25

JANUARY							MARCH						
S	M	T	W	T	F	S	S	M	T	W	T	F	S
				1	2	3	1	2	3	4	5	6	7
4	5	6	7	8	9	10	8	9	10	11	12	13	14
11	12	13	14	15	16	17	15	16	17	18	19	20	21
18	19	20	21	22	23	24	22	23	24	25	26	27	28
25	26	27	28	29	30	31	29	30	31				

THU.	FRI.	SAT.
5 Student Leadership Week Breakfast Club	6	7
12 Breakfast Club Maker Series	13 Maker Series	14
19 Reading Break No Regular Session Classes	20 Reading Break No Regular Session Classes	21
26 SAMU Live Comedy Show Breakfast Club Student Groups Mingler	27	28

Some dates may be subject to change after publication. To see the full SAMU events calendar visit:



NOTES

SUNDAY

01

MONDAY

02

Student Leadership
Week

TUESDAY

03

Student Leadership
Week

WEDNESDAY

04

Student Leadership
Week
Student Groups Mingler

THURSDAY

05

Student Leadership
Week
Breakfast Club

FRIDAY

06

SATURDAY

07

NOTES

SUNDAY

08

MONDAY

09

TUESDAY

10

Student Groups
Workshop
Major/Minor
Declarations
(Non-Competitive)

WEDNESDAY

11

THURSDAY

12

Breakfast Club
Maker Series

FRIDAY

13

Maker Series

SATURDAY

14

NOTES

SUNDAY

15

MONDAY

16

Family Day
University Closed

TUESDAY

17

Reading Break
No Regular Session
Classes

WEDNESDAY

18

Reading Break
No Regular Session
Classes

Students' Council
Meeting

THURSDAY

19

Reading Break
No Regular Session
Classes

FRIDAY

20

Reading Break
No Regular Session
Classes

SATURDAY

21

NOTES

SUNDAY

22

MONDAY

23

TUESDAY

24

Executive Committee
Election: Nominations
Close

WEDNESDAY

25

THURSDAY

26

SAMU Live Comedy Show
Breakfast Club
Student Groups Mingler

FRIDAY

27

SATURDAY

28

Campus Services

MacEwan Bookstore

Stop by to get your textbooks, supplies, and MacEwan gear. Start your semester right with everything you need!

MacEwan Eats

Coffee, lunch, or a sweet treat? We've got you covered with Starbucks, Tim Hortons, Subway and local favourites like Teapsy and Takam Market. Scan the QR code to see what's open.



Sport and Wellness

Enjoy free access to the pool, gym, and drop-in fitness classes. Join a rec league for extra fun! Scan below to register for a class or league.



Residence

Affordable, fully furnished suites with utilities included. Join 800+ residents and enjoy endless social events, just a stroll from your classes.

Transportation Services

Convenient parking, easy access to bus routes, and steps away from LRT stations. Plus, plenty of bike storage right on campus.

Print Services

Our on-campus print shop with fast, friendly service for all your course materials and posters.

Discover even more services!





MARCH

SUN.	MON.	TUE.	WED.
1	2 Executive Committee Election: Campaigning Begins	3 Executive Committee Election: Candidate Tabling	4 Executive Committee Election: Candidate Tabling
8	9 MacEwan Pride Week Pride Lounge Grad Photos	10 MacEwan Pride Week Executive Committee Election: Voting Grad Photos	11 MacEwan Pride Week Executive Committee Election: Voting Grad Photos
15	16 Grad Photos	17 SAMU Spring Market Grad Photos	18 SAMU Spring Market Students' Council Meeting Grad Photos
22	23 Grad Photos	24 Grad Photos	25 Grad Photos
29	30 Grad Photos	31 Grad Photos	

FEBRUARY							APRIL						
S	M	T	W	T	F	S	S	M	T	W	T	F	S
1	2	3	4	5	6	7				1	2	3	4
8	9	10	11	12	13	14	5	6	7	8	9	10	11
15	16	17	18	19	20	21	12	13	14	15	16	17	18
22	23	24	25	26	27	28	19	20	21	22	23	24	25
							26	27	28	29	30		

THU.	FRI.	SAT.
5 Executive Committee Election: Candidate Tabling Breakfast Club	6	7
12 MacEwan Pride Week Breakfast Club Dirtiest Sexiest Bingo Grad Photos	13 MacEwan Pride Week Grad Photos	14
19 SAMU Spring Market Grad Photos	20 Grad Photos	21
26 Breakfast Club Grad Photos	27 Grad Photos	28

Some dates may be
 subject to change
 after publication.
 To see the full SAMU
 events calendar visit:



NOTES

SUNDAY
01

MONDAY
02
Executive Committee
Election: Campaigning
Begins

TUESDAY
03
Executive
Committee Election:
Candidate Tabling

WEDNESDAY
04
Executive Committee
Election: Candidate
Tabling

THURSDAY
05
Executive Committee
Election: Candidate
Tabling
Breakfast Club

FRIDAY
06

SATURDAY
07

NOTES

SUNDAY

08

MONDAY

09

MacEwan Pride Week
Pride Lounge
Grad Photos

TUESDAY

10

MacEwan Pride Week
Executive Committee
Election: Voting
Grad Photos

WEDNESDAY

11

MacEwan Pride Week
Executive Committee Election:
Voting
Grad Photos

THURSDAY

12

MacEwan Pride Week
Breakfast Club
Dirtiest Sexiest Bingo
Grad Photos

FRIDAY

13

MacEwan Pride Week
Grad Photos

SATURDAY

14

NOTES

SUNDAY

15

Spring Market
Grad Photos

MONDAY

16

Grad Photos

TUESDAY

17

SAMU Spring Market
Grad Photos

WEDNESDAY

18

SAMU Spring Market
Students' Council
Meeting
Grad Photos

THURSDAY

19

SAMU Spring Market
Grad Photos

FRIDAY

20

Grad Photos

SATURDAY

21

NOTES

SUNDAY
22

MONDAY
23

Grad Photos

TUESDAY
24

Grad Photos

WEDNESDAY
25

Grad Photos

THURSDAY
26

Breakfast Club
Grad Photos

FRIDAY
27

Grad Photos

SATURDAY
28

NOTES

SUNDAY

29

MONDAY

30

Grad Photos

TUESDAY

31

Grad Photos



STUDENT ADVOCACY CENTRE

YOUR ADVOCACY PARTNERS

HERE'S HOW WE DO IT:

- Individual Student Advocacy and Policy Support
- Academic and non-academic support
- Referrals for MacEwan and Community Resources

Our team is here to support you.
Access our resources at samu.ca/advocacy

NOTES





SUN.	MON.	TUE.	WED.
			1 Grad Photos
5	6 Easter Monday University Closed	7 Grad Photos	8 Grad Photos
12	13 Grad Photos Final Exams	14 Grad Photos Final Exams	15 Students' Council Meeting Grad Photos Final Exams Last Day to Apply for Spring Convocation
19 Final Exams	20 Spring/Summer U-Pass Becomes Valid Grad Photos Final Exams	21 Grad Photos Final Exams	22 Grad Photos
26	27 Grad Photos Session Grades Due	28 Grad Photos	29 Grad Photos

MARCH							MAY						
S	M	T	W	T	F	S	S	M	T	W	T	F	S
1	2	3	4	5	6	7						1	2
8	9	10	11	12	13	14	3	4	5	6	7	8	9
15	16	17	18	19	20	21	10	11	12	13	14	15	16
22	23	24	25	26	27	28	17	18	19	20	21	22	23
29	30	31					24	25	26	27	28	29	30
							31						

THU.	FRI.	SAT.
2 SAMU Live Comedy Show Breakfast Club Grad Photos	3 Good Friday University Closed	4
9 Breakfast Club: Hot Breakfast Grad Photos	10 Grad Photos Last Day of Classes Last Day to Withdraw From Regular Session Classes Without Academic Penalty	11
16 Grad Photos Final Exams	17 Grad Photos Final Exams	18 Final Exams
23 Grad Photos	24 Grad Photos	25
30 Winter U-Pass Becomes Invalid Grad Photos		

Some dates may be
 subject to change
 after publication.
 To see the full SAMU
 events calendar visit:



NOTES

SUNDAY
29

MONDAY
30

TUESDAY
31

WEDNESDAY
01
Grad Photos

THURSDAY
02
SAMU Live
Comedy Show
Breakfast Club
Grad Photos

FRIDAY
03
Good Friday
University Closed

SATURDAY
04

NOTES

SUNDAY

05

MONDAY

06

Easter Monday
University Closed

TUESDAY

07

Grad Photos

WEDNESDAY

08

Grad Photos

THURSDAY

09

Breakfast Club:
Hot Breakfast
Grad Photos

FRIDAY

10

Grad Photos
Last Day of Classes
Last Day to Withdraw
From Regular Session
Classes Without
Academic Penalty

SATURDAY

11

NOTES

SUNDAY
12

MONDAY
13
Grad Photos
Final Exams

TUESDAY
14
Grad Photos
Final Exams

WEDNESDAY
15
Students' Council Meeting
Grad Photos
Final Exams
Last Day to Apply for Spring Convocation

THURSDAY
16
Grad Photos
Final Exams

FRIDAY
17
Grad Photos
Final Exams

SATURDAY
18
Final Exams

NOTES

SUNDAY

19

Final Exams

MONDAY

20

Spring/Summer U-Pass
Becomes Valid
Grad Photos
Final Exams

TUESDAY

21

Grad Photos
Final Exams

WEDNESDAY

22

Grad Photos

THURSDAY

23

Grad Photos

FRIDAY

24

Grad Photos

SATURDAY

25

NOTES

SUNDAY
26

MONDAY
27
Grad Photos
Session Grades Due

TUESDAY
28
Grad Photos

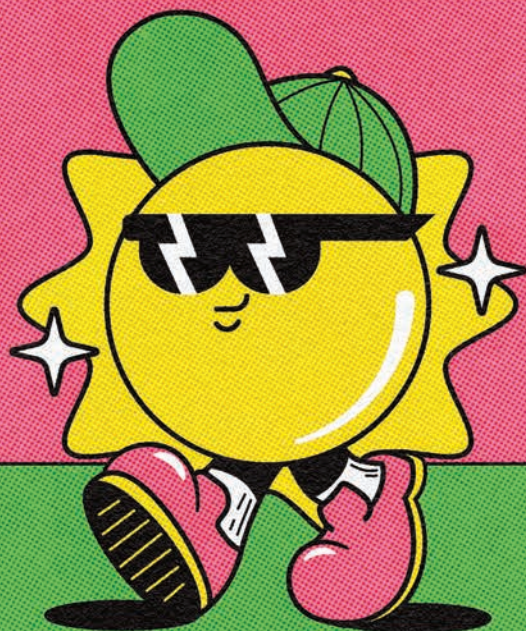
WEDNESDAY
29
Grad Photos

THURSDAY
30
Winter U-Pass Becomes
Invalid
Grad Photos

FRIDAY
01

SATURDAY
02

★ SPRING ★ SUMMER



MAY-AUG
2026





Breakfast Club



NOW WEEKLY!

THURSDAYS, 9–11 AM
SAMU STUDENT LOUNGE

IN THE FALL AND WINTER TERMS
STARTING SEPTEMBER 25

Choose from a variety of items* to build
your own energizing breakfast:

Muffin or Cereal

Fresh Fruit

Milk or Dairy Alternatives

Yogurt & Protein Options

Granola Bar or a Snack

Beverages

*All items subject to availability. Breakfast is
available while supplies last.

FIND THE FULL SCHEDULE AT
[SAMU.CA/BREAKFASTCLUB](https://samu.ca/breakfastclub)

MY CLASS SCHEDULE

MON.	TUE.	WED.	THU.	FRI.	
					8 a.m.
					9 a.m.
					9:30 a.m.
					10 a.m.
					11 a.m.
					12 p.m.
					12:30 p.m.
					1 p.m.
					2 p.m.
					3 p.m.
					3:30 p.m.
					4 p.m.
					5 p.m.
					6 p.m.
					6:30 p.m.
					7 p.m.
					8 p.m.
					9 p.m.



SUN.	MON.	TUE.	WED.
3	4 Students Removed From May Session Waitlist	5 Last Day to Add or Drop May Session Classes Spring Session Waitlists Closed	6 Students Removed From Spring Session Waitlist
10	11 Students Removed From Regular Session Waitlist	12 Last Day to Add or Drop Regular Session Classes	13
17	18 Victoria Day University Closed	19	20 Students' Council Meeting Last Day of May Session Classes Last Day to Withdraw From Classes Without Academic Penalty
24	25	26	27 May Session Grades Due
31			

APRIL							JUNE						
S	M	T	W	T	F	S	S	M	T	W	T	F	S
			1	2	3	4		1	2	3	4	5	6
5	6	7	8	9	10	11	7	8	9	10	11	12	13
12	13	14	15	16	17	18	14	15	16	17	18	19	20
19	20	21	22	23	24	25	21	22	23	24	25	26	27
26	27	28	29	30			28	29	30				

THU.	FRI.	SAT.
	1 Grad Photos May Session Classes Begin May Session Waitlists Closed Regular Session Classes Begin Spring Session Classes Begin	2
7 Deadline for Payment of May Session Tuition and Fees Last Day to Add or Drop Spring Session Classes	8 Regular Session Waitlists Closed	9
14 Deadline for Payment of Spring Session Tuition and Fees	15	16
21	22 May Session Final Exams	23
28	29 Deadline for Payment of Regular Session Tuition and Fees	30 Spring/Summer U-Pass Fee Opt-Out Deadline

Some dates may be
subject to change
after publication.
To see the full SAMU
events calendar visit:



<div>SUNDAY</div> <div>26</div>	<div>MONDAY</div> <div>27</div>
<div>TUESDAY</div> <div>28</div>	<div>WEDNESDAY</div> <div>29</div>
<div>THURSDAY</div> <div>30</div>	<div>FRIDAY</div> <div>01</div> <div>May Session Classes Begin</div> <div>May Session Waitlists Closed</div> <div>Regular Session Classes Begin</div> <div>Spring Session Classes Begin</div>
<div>SATURDAY</div> <div>02</div>	
	<div>SUNDAY</div> <div>03</div>
<div>MONDAY</div> <div>04</div> <div>Students Removed From May Session Waitlist</div>	<div>TUESDAY</div> <div>05</div> <div>Last Day to Add or Drop May Session Classes</div> <div>Spring Session Waitlists Closed</div>
<div>WEDNESDAY</div> <div>06</div> <div>Students Removed From Spring Session Waitlist</div>	<div>THURSDAY</div> <div>07</div> <div>Deadline for Payment of May Session Tuition and Fees</div> <div>Last Day to Add or Drop Spring Session Classes</div>
<div>FRIDAY</div> <div>08</div> <div>Regular Session Waitlists Closed</div>	<div>SATURDAY</div> <div>09</div>

SUNDAY**10****MONDAY****11**Students Removed From Regular
Session Waitlist**TUESDAY****12**Last Day to Add or Drop Regular
Session Classes**WEDNESDAY****13****THURSDAY****14**Deadline for Payment of Spring Session
Tuition and Fees**FRIDAY****15****SATURDAY****16****SUNDAY****17****MONDAY****18**Victoria Day
University Closed**TUESDAY****19****WEDNESDAY****20**Students' Council Meeting
Last Day of May Session Classes
*Last Day to Withdraw From Classes Without
Academic Penalty***THURSDAY****21****FRIDAY****22**

May Session Final Exams

SATURDAY**23**

SUNDAY
24

MONDAY
25

TUESDAY
26

WEDNESDAY
27
May Session Grades Due

THURSDAY
28

FRIDAY
29
Deadline for Payment of Regular Session
Tuition and Fees

SATURDAY
30
Spring/Summer U-Pass Fee
Opt-Out Deadline

SUNDAY
31

NOTES

.
.
.
.
.
.
.
.
.
.
.
.



MacEwan ALUMNI CONNECTION

More than 93,000 strong, our alumni are a valuable resource.

MacEwan alumni once stood where you are - now, they're experienced professionals with valuable advice and insight to share.

Why not learn from those who've been there?

- Explore career paths related to your program
- Sharpen your communication and networking skills
- Build a network of alumni based on interests and industry



Start connecting today at
MacEwan.ca/AlumniConnection



Future Launch



JUNE

SUN.	MON.	TUE.	WED.
	1 June Session Classes Begin June Session Waitlists Closed	2 Students Removed From June Session Waitlist	3 Last Day to Add or Drop June Session Classes
7	8 Grad Photos	9 Grad Photos	10 Grad Photos
14	15 Grad Photos	16 Grad Photos	17 Students' Council Meeting Grad Photos Last Day of June Session Classes Last Day to Withdraw From Classes Without Academic Penalty
21	22 Spring Session Final Exams	23 Spring Session Final Exams	24 June Session Grades Due
28	29 Spring Session Grades Due	30	

MAY							JULY						
S	M	T	W	T	F	S	S	M	T	W	T	F	S
					1	2				1	2	3	4
3	4	5	6	7	8	9	5	6	7	8	9	10	11
10	11	12	13	14	15	16	12	13	14	15	16	17	18
17	18	19	20	21	22	23	19	20	21	22	23	24	25
24	25	26	27	28	29	30	26	27	28	29	30	31	
31													

THU.	FRI.	SAT.
4	5	6
11 Grad Photos	12 Grad Photos	13
18 Grad Photos Last Day of Spring Session Classes <i>Last Day to Withdraw From Classes Without Academic Penalty</i>	19 Grad Photos June Session Final Exams	20
25	26	27

Some dates may be
subject to change
after publication.
To see the full SAMU
events calendar visit:



SUNDAY

31

MONDAY

01

June Session Classes Begin
June Session Waitlists Closed

TUESDAY

02

Students Removed From
June Session Waitlist

WEDNESDAY

03

Last Day to Add or Drop June Session Classes

THURSDAY

04

FRIDAY

05

SATURDAY

06

SUNDAY

07

MONDAY

08

Grad Photos

TUESDAY

09

Grad Photos

WEDNESDAY

10

Grad Photos

THURSDAY

11

Grad Photos

FRIDAY

12

Grad Photos

SATURDAY

13

SUNDAY**14****MONDAY****15**

Grad Photos

TUESDAY**16**

Grad Photos

WEDNESDAY**17**

Students' Council Meeting

Grad Photos

Last Day of June Session Classes

*Last Day to Withdraw From Classes Without
Academic Penalty***THURSDAY****18**

Grad Photos

Last Day of Spring Session Classes

*Last Day to Withdraw From Classes Without
Academic Penalty***FRIDAY****19**

Grad Photos

June Session Final Exams

SATURDAY**20****SUNDAY****21****MONDAY****22**

Spring Session Final Exams

TUESDAY**23**

Spring Session Final Exams

WEDNESDAY**24**

June Session Grades Due

THURSDAY**25****FRIDAY****26****SATURDAY****27**

SUNDAY
28

MONDAY
29
Spring Session Grades Due

TUESDAY
30

WEDNESDAY
01

THURSDAY
02

FRIDAY
03

SATURDAY
04

NOTES

.
.
.
.
.
.
.
.
.
.
.
.

NOTES





SUN.	MON.	TUE.	 WED.
			1 Canada Day University Closed
5	6 Last Day to Add or Drop July Session Classes Summer Session Waitlists Closed	7 Students Removed From Summer Session Waitlist	8 Deadline for payment of July Session tuition and fees Last Day to Add or Drop Summer Session Classes
12	13	14	15 Students' Council Meeting Deadline for Payment of Summer Session Tuition and Fees
19	20 Last day of July Session classes Last Day to Withdraw From Classes Without Academic Penalty	21	22 July Session Final Exams
26	27 July Session Grades Due	28	29

JUNE							AUGUST						
S	M	T	W	T	F	S	S	M	T	W	T	F	S
	1	2	3	4	5	6							1
7	8	9	10	11	12	13	2	3	4	5	6	7	8
14	15	16	17	18	19	20	9	10	11	12	13	14	15
21	22	23	24	25	26	27	16	17	18	19	20	21	22
28	29	30					23	24	25	26	27	28	29
							30	31					

THU.	FRI.	SAT.
2 July Session Classes Begin July Session Waitlists Closed Summer Session Classes Begin	3 Students Removed From July Session Waitlist	4
9	10	11
16	17	18
23	24	25
30	31	

Some dates may be
 subject to change
 after publication.
 To see the full SAMU
 events calendar visit:



<div>SUNDAY</div> <div>28</div>	<div>MONDAY</div> <div>29</div>
<div>TUESDAY</div> <div>30</div>	<div>WEDNESDAY</div> <div>01</div> <div>Canada Day University Closed</div>
<div>THURSDAY</div> <div>02</div> <div>July Session Classes Begin July Session Waitlists Closed Summer Session Classes Begin</div>	<div>FRIDAY</div> <div>03</div> <div>Students Removed From July Session Waitlist</div>
<div>SATURDAY</div> <div>04</div>	
	<div>SUNDAY</div> <div>05</div>
<div>MONDAY</div> <div>06</div> <div>Last Day to Add or Drop July Session Classes Summer Session Waitlists Closed</div>	<div>TUESDAY</div> <div>07</div> <div>Students Removed From Summer Session Waitlist</div>
<div>WEDNESDAY</div> <div>08</div> <div>Deadline for payment of July Session tuition and fees Last Day to Add or Drop Summer Session Classes</div>	<div>THURSDAY</div> <div>09</div>
<div>FRIDAY</div> <div>10</div>	<div>SATURDAY</div> <div>11</div>

SUNDAY

12

MONDAY

13

TUESDAY

14

WEDNESDAY

15

Students' Council Meeting
 Deadline for Payment of
 Summer Session Tuition
 and Fees

THURSDAY

16

FRIDAY

17

SATURDAY

18

SUNDAY

19

MONDAY

20

Last day of July Session
 Classes
*Last Day to Withdraw From
 Classes Without Academic Penalty*

TUESDAY

21

WEDNESDAY

22

July Session
 Final Exams

THURSDAY

23

FRIDAY

24

SATURDAY

25

SUNDAY
26

MONDAY
27
July Session Grades Due

TUESDAY
28

WEDNESDAY
29

THURSDAY
30

FRIDAY
31

SATURDAY
01

NOTES

.
.
.
.
.
.
.
.
.
.
.
.



40 YEARS OF PRINT & BEYOND

It's well past time
to experience printing
as it ought to be.

SUPPLIER OF THE SAMU STUDENT HANDBOOK

DIGITAL PRINTING · OFFSET PRINTING · LABELS · SIGNAGE



AUGUST

SUN.	MON.	TUE.	WED.
2	3 Heritage Day University Closed	4 August Session Classes Begin August Session Waitlists Closed	5 Students Removed From August Session Waitlist
9	10 Deadline for Payment of August Session Tuition and Fees Regular Session Final Exams	11 Regular Session Final Exams	12
16	17 Regular Session Grades Due	18	19 Students' Council Meeting Last Day of Summer Session Classes Last Day to Withdraw From Classes Without Academic Penalty
23	24 August Session Final Exams Summer Session Final Exams	25	26
30	31 Spring/Summer U-Pass Becomes Invalid Summer Session Grades Due August Session Grades Due		

JULY							SEPTEMBER						
S	M	T	W	T	F	S	S	M	T	W	T	F	S
			1	2	3	4			1	2	3	4	5
5	6	7	8	9	10	11	6	7	8	9	10	11	12
12	13	14	15	16	17	18	13	14	15	16	17	18	19
19	20	21	22	23	24	25	20	21	22	23	24	25	26
26	27	28	29	30	31		27	28	29	30			

THU.	FRI.	SAT.
		1
6 Last Day to Add or Drop August Session Classes Last Day of Regular Session classes Last Day to Withdraw From Classes Without Academic Penalty	7	8
13	14	15
20 Last Day of August Session Classes Last Day to Withdraw From Classes Without Academic Penalty	21 Summer Session Final Exams	22
27	28	29

Some dates may be subject to change after publication. To see the full SAMU events calendar visit:



<div><div>SUNDAY</div><div>26</div></div>	<div><div>MONDAY</div><div>27</div></div>
<div><div>TUESDAY</div><div>28</div></div>	<div><div>WEDNESDAY</div><div>29</div></div>
<div><div>THURSDAY</div><div>30</div></div>	<div><div>FRIDAY</div><div>31</div></div>
<div><div>SATURDAY</div><div>01</div></div>	
	<div><div>SUNDAY</div><div>02</div></div>
<div><div>MONDAY</div><div>03</div><div>Heritage Day University Closed</div></div>	<div><div>TUESDAY</div><div>04</div><div>August Session Classes Begin August Session Waitlists Closed</div></div>
<div><div>WEDNESDAY</div><div>05</div><div>Students Removed From August Session Waitlist</div></div>	<div><div>THURSDAY</div><div>06</div><div>Last Day to Add or Drop August Session Classes Last Day of Regular Session classes Last Day to Withdraw From Classes Without Academic Penalty</div></div>
<div><div>FRIDAY</div><div>07</div></div>	<div><div>SATURDAY</div><div>08</div></div>

SUNDAY 09	MONDAY 10 Deadline for Payment of August Session Tuition and Fees Regular Session Final Exams
TUESDAY 11 Regular Session Final Exams	WEDNESDAY 12
THURSDAY 13	FRIDAY 14
SATURDAY 15	
	SUNDAY 16
MONDAY 17 Regular Session Grades Due	TUESDAY 18
WEDNESDAY 19 Students' Council Meeting Last Day of Summer Session Classes <i>Last Day to Withdraw From Classes Without Academic Penalty</i>	THURSDAY 20 Last Day of August Session Classes <i>Last Day to Withdraw From Classes Without Academic Penalty</i>
FRIDAY 21 Summer Session Final Exams	SATURDAY 22

<div>SUNDAY</div> <div>23</div>	<div>MONDAY</div> <div>24</div> <div>August Session Final Exams</div> <div>Summer Session Final Exams</div>
<div>TUESDAY</div> <div>25</div>	<div>WEDNESDAY</div> <div>26</div>
<div>THURSDAY</div> <div>27</div>	<div>FRIDAY</div> <div>28</div>
<div>SATURDAY</div> <div>29</div>	
	<div>SUNDAY</div> <div>30</div>
<div>MONDAY</div> <div>31</div> <div>Spring/Summer U-Pass Becomes Invalid</div> <div>Summer Session Grades Due</div> <div>August Session Grades Due</div>	<div>TUESDAY</div> <div>01</div>
<div>WEDNESDAY</div> <div>02</div>	<div>THURSDAY</div> <div>03</div>
<div>FRIDAY</div> <div>04</div>	<div>SATURDAY</div> <div>05</div>



SUNDAY

MONDAY

MARMOT BASIN
JASPER-CANADIAN ROCKIES

SKI BREAKS > STUDY BREAKS

THURSDAY

FR

**STUDENTS GET
GREAT DISCOUNTS!**

SATURDAY

LIFT PASSES

Show your student ID at our ticket windows and receive your discounted lift pass.

SEASON PASSES

Student season passes are on sale now! Grab yours online and get ready for an epic season.

MONDAY

TU

MARMOT ESCAPE CARD

Want to ski and ride for half price all season? Grab the Marmot Escape Card and enjoy 50% off lift tickets with no blackouts. Plus get discounts on the mountain and at other ski resorts!

WEDNESDAY

THURSDAY

FRIDAY

SATURDAY



Learn more and get
shred ready at
SkiMarmot.com!



Connect With Your MacEwan Community



@MacEwanU



@MacEwanUni



@MacEwanUniversity



@MacEwanU



@MacEwanUniversity



@MacEwanU

#macewanu

