

ZiggyBox™ Mini NVidia® Jetson™ Computer System



Miniature, Low Cost Solution

The ZiggyBox provides a compact and highly cost-effective solution for AI at the edge and machine learning applications for industrial and lab applications. It is based around the NVIDIA® Jetson™ TX2/TX2i advanced computing module with NVIDIA Pascal™-family GPU technology. The Jetson module is housed in a rugged miniature enclosure measuring only 2" x 3.5" x .28" (50mm x87mm x7.2mm).

ZiggyBox offers easy access to the most popular Jetson I/O features, including Ethernet, USB 3.0 / 2.0 / OTG ports, HDMI display, and 2 RS-232 ports. The built-in carrier board adds a valuable data acquisition circuit with real-world analog and digital I/O features and software support.

An integrated heat sink provides reliable operation at up to 80°C without forced air. With its integrated Linux OS and table-top / DIN rail mounting options, ZiggyBox is ready to be deployed wherever the combination of high-performance computing and ultra-compact size are required.

ZiggyBox Features

- ◆ 1x 10/100/1000 Ethernet (RJ-45)
- ◆ 1x USB 3.0 Type A + 1x USB 2.0 Type A
- ◆ 1x USB 2.0 micro with OTG support
- ◆ 1x HDMI
- ◆ 2x RS-232
- ◆ 6x analog inputs, 12-bit resolution, 0-3.3V output range, up to 1Msps throughput
- ◆ 2x analog outputs, 12-bit resolution, 0-3.3V output range
- ◆ 12x digital I/O, 3.3V logic levels
- ◆ Input voltage: 9-15VDC (with TX2 installed) / 9V-19VDC (with TX2i installed)
- ◆ Dimensions: 63x67x96mm / 2.4x2.6x3.7"
- ◆ Operating temperature: -40°C to 85°C

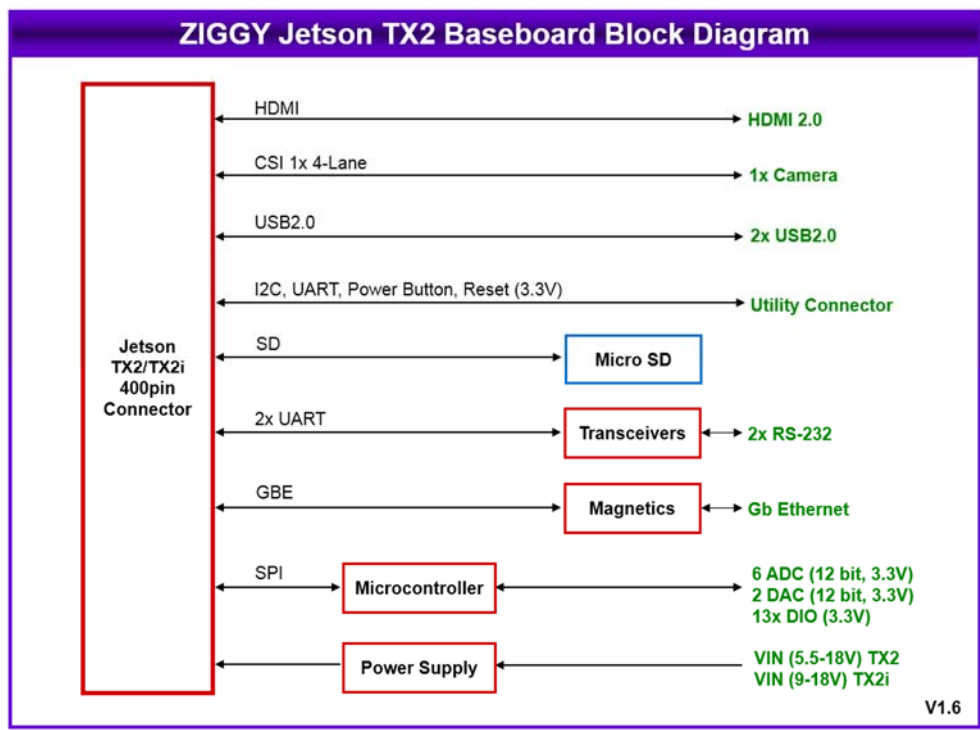


ZiggyBox internal electronics showing bottom-mounted Jetson TX2/TX2i Module

Jetson X2 and Jetson X2i

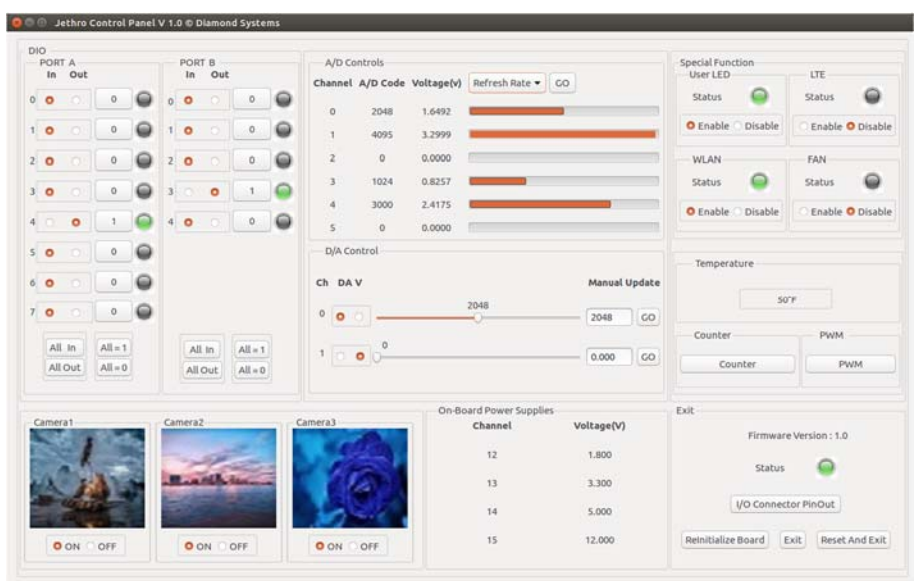
Jetson TX2 is a very fast, AI computing device built on the NVIDIA Pascal™-family GPU and loaded with 8GB of memory with a 5-year operating lifespan. Jetson TX2i is built around an NVIDIA Volta™ GPU for industrial environments such as high-performance edge computing found in robots machine vision and it has a 10-year operating life.

ZiggyBox™ Mini NVidia® Jetson™ Computer System



Data Acquisition

ZiggyBox contains a full-fledged analog and digital I/O circuit that provides control and monitoring of real-world events such as sensor inputs, temperature control, keypads/switches, and industrial processes. All features are supported by Diamond’s built-in data acquisition driver software, featuring a programming library with application demos plus an interactive GUI-based control program that offers real-time access and control.



Ordering information

ZIGBOX-20-HD
ZiggyBox with TX2 module, heat sink (no fan), DIN Bracket

ZIGBOX-21-HD
ZiggyBox with TX2i module, heat sink (no fan), DIN Bracket