

Sensory activities for babies and toddlers...1

Sensory Arch

We transformed one of our versatile willow effect tunnels into a sensory den by attaching lengths of different fabrics, wool and ribbons to the top. Our littlest learners loved looking at the different colours and exploring the textures as they hid inside and crawled underneath them.

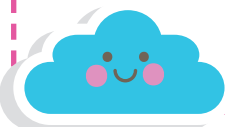
What you'll need

- D44468 Willow Effect Tunnel Set
- A variety of different lengths of wools, fabrics and natural textures

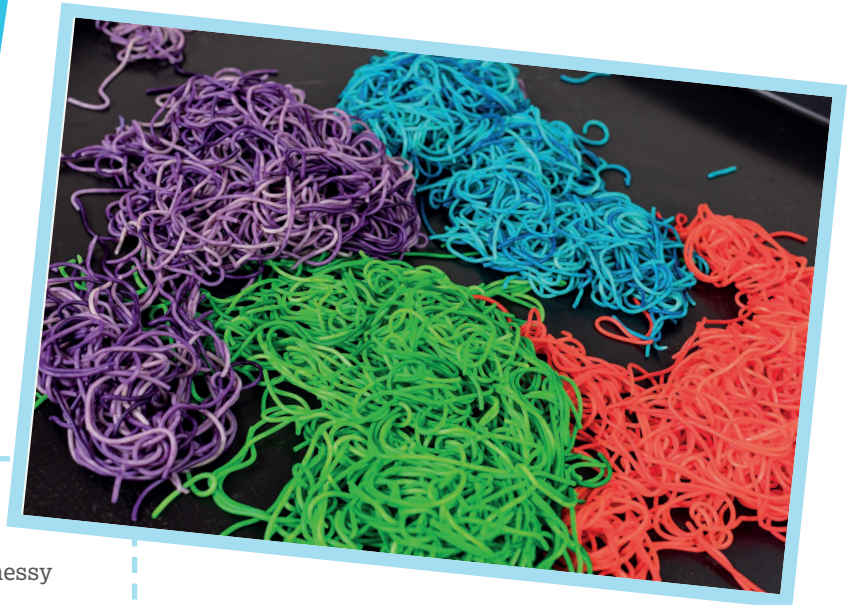


Featured in
Issue 10
Spring 2020

ypo.co.uk/earlyyears



Sensory activities for babies and toddlers...2



Rainbow Spaghetti

This brightly coloured spaghetti is perfect for messy sensory fun!

What you'll need

- 500g of dried spaghetti (this should be enough to make 4 different colours)
- Sealable plastic bags
- Food colouring
- Vegetable oil
- Plastic tray or container

Method

1. Cook the spaghetti according to the packet instructions and then rinse under cold water.
2. Divide the cooked spaghetti between the plastic bags and add a few drops of vegetable oil before adding the food colouring and sealing the bag.
3. Shake and squish the bag until the spaghetti is fully covered with the food colouring (you could always get the children to help with this part).
4. Open the bags and allow the dyed spaghetti to stand for 10 minutes so that as much colour as possible is absorbed.
5. Rinse under cold water to remove any excess food colouring and then add to a play tray or sensory bin and let the fun begin!



Featured in
Issue 10
Spring 2020



ypo.co.uk/earlyyears

Sensory activities for babies and toddlers...3



Crazy Foam and Duplo Lego

We filled one of our play trays with crazy foam for our littlest learners to explore and they absolutely loved it! You could try hiding objects such as plastic bricks or animals for them to find but just make sure they stay sat down or use a stand or tabletop sand and water tray as this one can get very slippery.

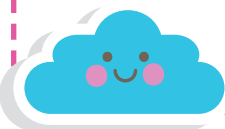
What you'll need

- 876063 Pink and Blue Crazy Foam - Pack of 2
- 801659 YPO Play Tray - Black
- 801663 YPO Play Tray Adjustable Height Stand



Featured in
Issue 10
Spring 2020

ypo.co.uk/earlyyears



Sensory activities for babies and toddlers... 4



Sensory Boxes

Babies will often be more engaged with wrapping paper and a gift box than the toy inside – and you know why? All their senses are stimulated by the textures, colours and sounds of these materials. You can make your own sensory boxes very cheaply using natural things or fabrics that have a wide range of textures. Our cute babies really loved pulling the fabrics out of the sensory boxes.

What you'll need

- Tissue boxes or small cardboard boxes
- 302325 - Acrylic Gem Stones
- 749125 - YPO PVA Glue
- 711412 - YPO Premium Acrylic Paint
- 301614 - Sequin Mesh/Punchinella
- 303941 - Wiggle Eyes (Stick on)
- 135755 - A4 White Card, 200 Micron
- 319708 - Barrel Beads
- 302126 - Rainbow Organza
- 300756 - Wrinkle Paper Shred, Pastel Colours



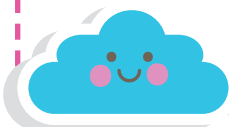
Method

1. For the gem box, cover the front side with PVA glue and stick gems on.
2. Paint the rest of the sides with a colour of your choice.
3. Cut out the sequin mesh and stick on top ensuring a hole is cut where the tissue box opening is.
4. Fill with material shreds, pom poms, beads on strings and wrinkle paper shreds.

Featured in Issue 10 Spring 2020



ypo.co.uk/earlyyears



Sensory activities for babies and toddlers...5



Sensory Slime Bags

Playing with slime is a fun sensory activity that you can create easily with just a few items. We created this simple activity that your little ones will love, and it promotes learning through exploration without too much mess. These sensory bags will stimulate their senses for longer periods and can help build their creativity, fine motor skills and coordination.

What you'll need

- 319708 Barrel Beads
- 749249 YPO Glitter, Multi-Coloured
- 303877 Wiggle Eyes
- 731237 Large Flitter Glitter
- 303927 Elmer's Slime Starter Pack
- 758604 Resealable Polythene Bags

Method

1. Follow the instructions on the Elmer's Slime Starter Pack to mix the slime in a container.
2. Select as many sensory products you can find or any of the suggested products above.
3. Once your slime is mixed, you can start to pour the sensory slime into the plastic bag and seal.
4. Your sensory slime bags are ready to explore!



Featured in
Issue 10
Spring 2020

ypo.co.uk/earlyyears

