



Mental Maths /Problem Solving

Monday 22nd February 2021



Question 1

Write the number one thousand five hundred and seventy three in figures.



Question 2

Write an even number
between 90 and 100.





Question 3

What is 8432 divided by
4?

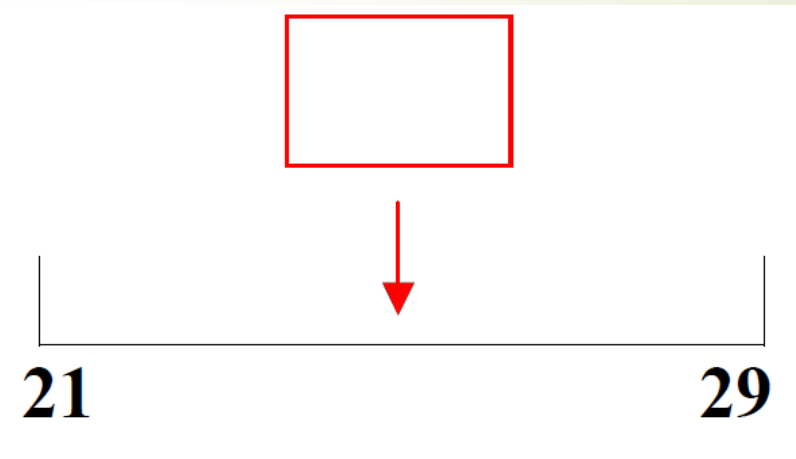


Question 4

I think of a number,
then subtract 16. The
answer is 24. What
was my number? 40

Question 5

Estimate the number to which the arrow is pointing.



Question 6

Look at the sequence :Write the next number.

13 18 23 28



Question 7

What is half 632?

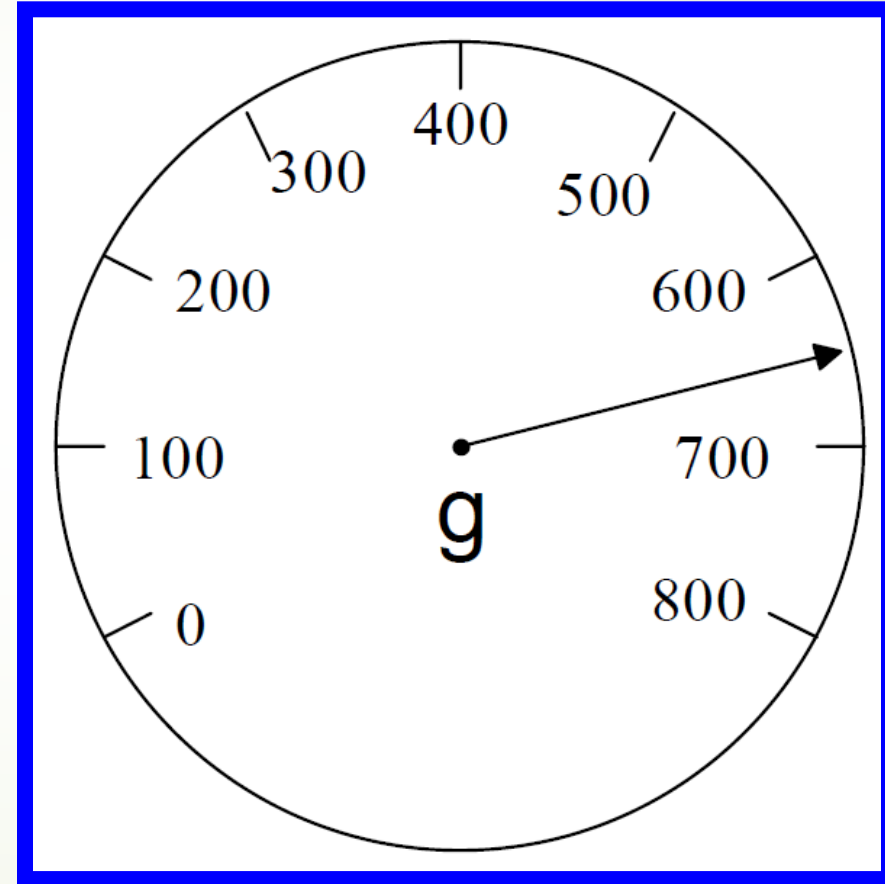


Question 8

What is 535 shared
between 5?

Question 9

Look at the
weighing scales.
What weight is
shown?





Question 10

Dave buys 5 CDs at £1.99 each. He pays with a £10 note. How much change should he get?



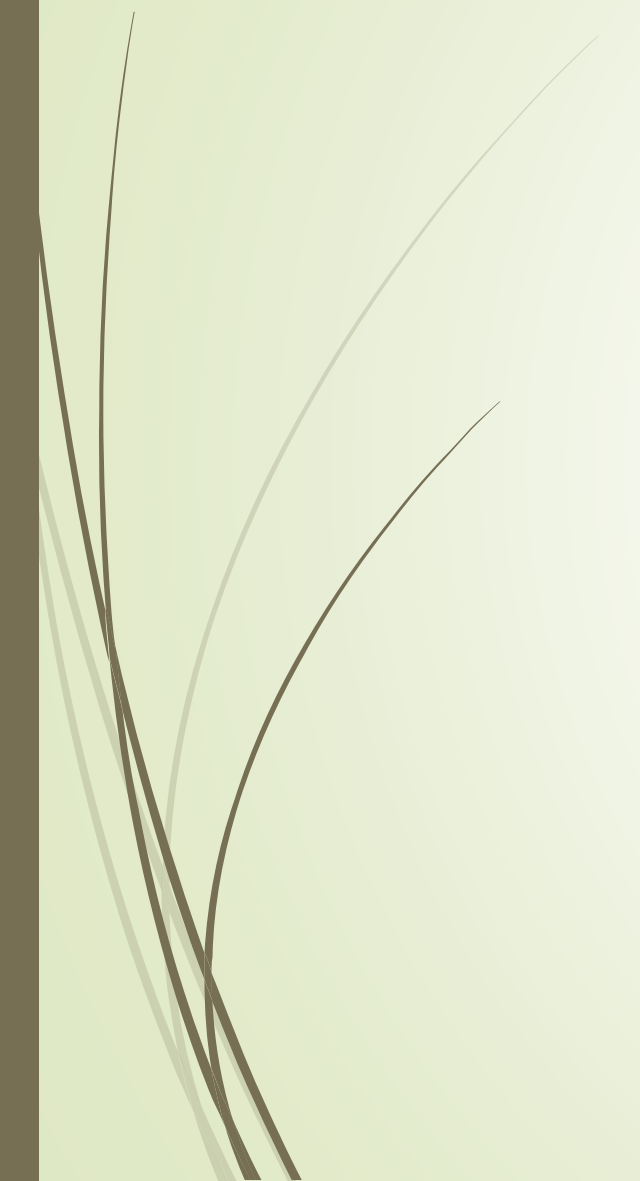
Question 11

If you add 1276 and 2733 together, is the answer odd or even?



Question 12

How many times can
you cut 3cm from
25cm of string?





Question 13

The price of a leather jacket doubled after the January sales. It was £575. How much is it now?

Question 14

Write the number which is

a) 10 more than 700

b) 100 more than 54

c) 10 less than 880

d) 100 less than 211

Question 15

How much will it cost for two adults and five children to go to the fun park? Show your working, you may get a mark.

| | |
|--------------|--------------|
| Adult | £5.25 |
| Child | £3.00 |





Mental Maths /Problem Solving

Friday 5th February 2021

Question 1

Continue the number sequence in both directions.

| | | | | | | | | |
|--|--|--|----|----|----|--|--|--|
| | | | 30 | 27 | 24 | | | |
|--|--|--|----|----|----|--|--|--|

| | | | | | | | | |
|----|----|----|----|----|----|----|----|----|
| 39 | 36 | 33 | 30 | 27 | 24 | 21 | 18 | 15 |
|----|----|----|----|----|----|----|----|----|

Question 2

The table below shows how many people visited the Leisure Centre in one week.

| TUES | WED | THURS | FRI | SAT | SUN |
|------|-----|-------|-----|-----|-----|
| 164 | 189 | 168 | 210 | 345 | 334 |

- a) How many people went to the Centre at the weekend (Friday, Saturday and Sunday)?

Question 3

Find 2 numbers in the grid that total 100 exactly and write them in a number sentence.

$$\boxed{} + \boxed{} = 100$$

| | | | |
|-----------|-----------|-----------|-----------|
| 16 | 43 | 59 | 41 |
| 25 | 2 | 32 | 11 |
| 82 | 34 | 57 | 73 |
| 9 | 64 | 48 | 30 |

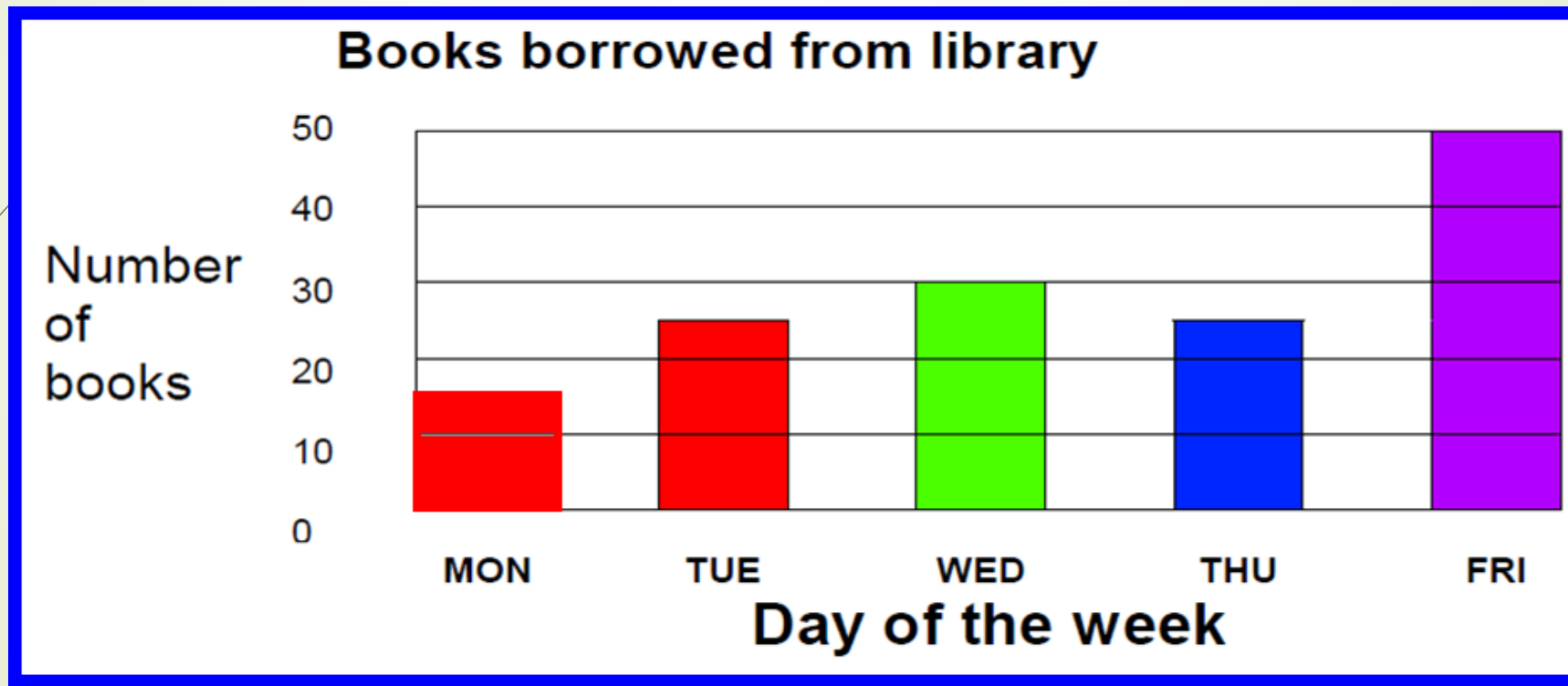
Question 4

The Smith family are going on holiday 2 weeks after the 14th of June. What date will that be?

| June | | | | | | |
|------|----|----|----|----|----|----|
| S | M | T | W | T | F | S |
| | | | | | 1 | 2 |
| 3 | 4 | 5 | 6 | 7 | 8 | 9 |
| 10 | 11 | 12 | 13 | 14 | 15 | 16 |
| 17 | 18 | 19 | 20 | 21 | 22 | 23 |
| 24 | 25 | 26 | 27 | 28 | 29 | 30 |

Question 5

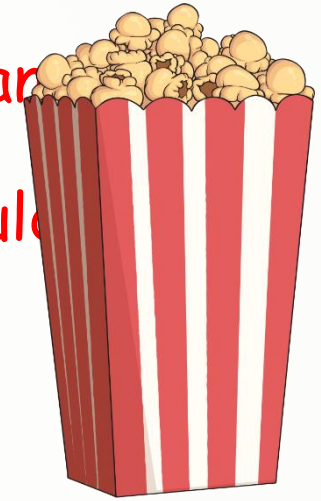
How many books were borrowed altogether during the week?



Question 6

Solve Addition and Subtraction Two-Step Problems

There are 4 screens in the cinema. Screen 1 can hold 259 people, screen 2 can hold 328 people, screen 3 can hold 199 people and screen 4 can hold 355 people. If the cinema were completely full, how many people would be seated?



The figures below show the number of people who were watching the 7:30pm showing of a film in each screen:

Screen 1 - 109 people

Screen 2 - 192 people

Screen 3 - 184 people

Screen 4 - 78 people

During this film, how many seats were empty in the entire cinema?

1141
563

578

Question 7

Solve Addition and Subtraction Two-Step Problems

Mr and Mrs Adams have won the lottery and booked three holidays!

Holiday 1 costs £1043.

Holiday 2 costs £4932.

Holiday 3 costs £2934.

How much do they owe altogether?

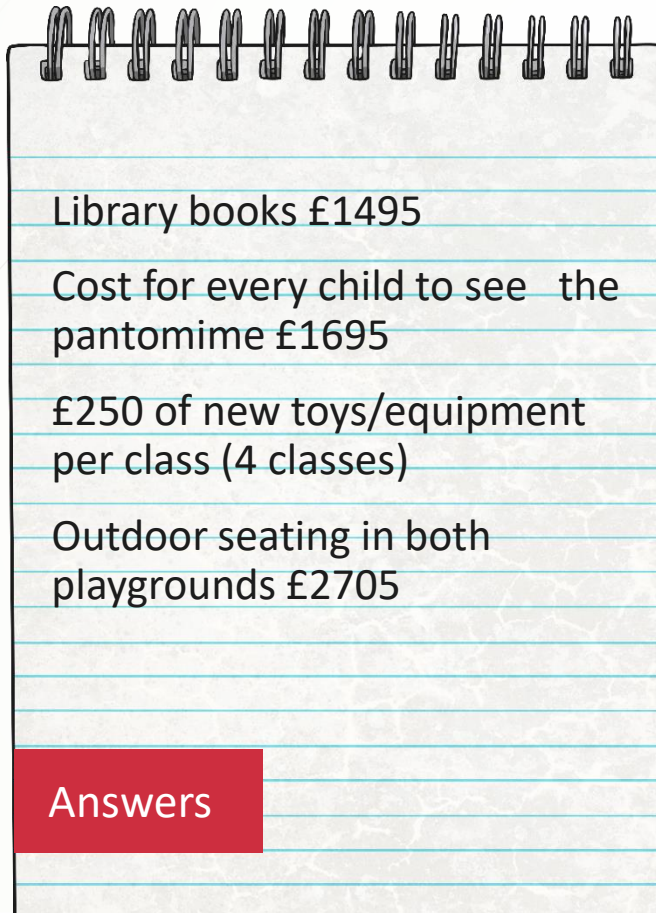
The holiday company offers them a discount of £1059 to be deducted from the total price. What is the new total they must pay?



Question 8

Solve Addition and Subtraction Two-Step Problems

Park Lane School won £8000 in a competition run by a newspaper. The Headteacher has made a quick note of how the money has been spent so far:



How much has been spent so far?

How much is left to spend?

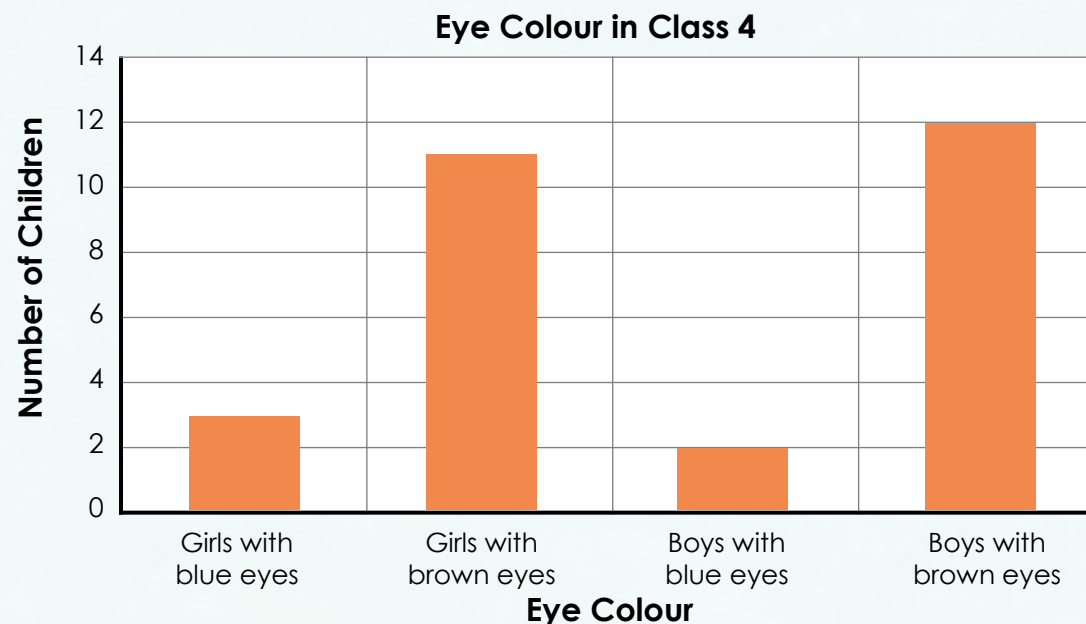
Question 9:

Solve Addition and Subtraction Two-Step Problems

In a recent survey of 4000 people, it was discovered that 1938 people were left-handed and 2034 people were right-handed. The remainder said they were ambidextrous (could use either hand). How many people were ambidextrous?

Interpret and present discrete and continuous data using appropriate graphical methods, including bar charts and time graphs

Look at the bar chart then answer the questions.

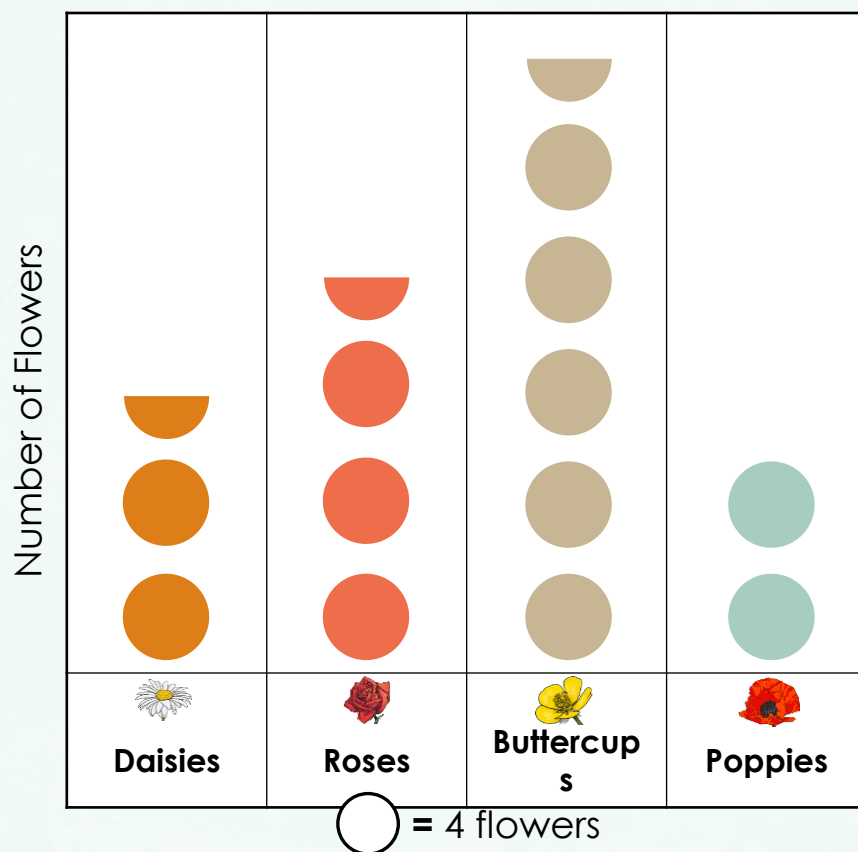


1. How many boys have brown eyes? **12**
2. How many girls have blue eyes? **3**
3. How many children have blue eyes? **5**
4. How many children have brown eyes? **23**
5. How many more girls have brown eyes than have blue eyes? **8**
6. How many more boys have brown eyes than have blue eyes? **10**
7. How many children are there in Class 4?

Reveal
Answers

Solve comparison, sum and difference problems using information presented in bar charts, pictograms, tables and other graphs

Look at the pictogram about the number of flowers picked from a field then answer the questions.



1. How many daisies were picked? **10**
2. How many more buttercups than roses were picked? **8**
3. How many daisies and buttercups were picked altogether? **32**
4. How many more roses than poppies were picked? **6**
5. How many daisies and roses were picked in total? **24**
6. How many flowers were picked altogether? **54**
7. Write a question about the tally chart for your partner to answer.

Reveal
Answers

Solve comparison, sum and difference problems using information presented in bar charts, pictograms, tables and other graphs

Look at the tally chart then answer the questions.

| Type of Transport | Number Seen | Total |
|-------------------|-------------|-------|
| Bicycle | | 15 |
| Car | | 30 |
| Train | | 4 |
| Bus | | 13 |



1. Which was the most common vehicle seen?
Car
2. How many more bicycles than buses were seen?
2
3. How many more cars than bicycles were seen?
15
4. Write the total number for each vehicle.
5. How many trains, buses and cars were seen altogether?
47
6. How many vehicles were seen altogether?
52
7. Write a question about the tally chart for your partner to answer.

Reveal
Answers

Solve Addition and Subtraction Two-Step Problems Answer

There are 4 screens in the cinema. Screen 1 can hold 259 people, screen 2 can hold 328 people, screen 3 can hold 199 people and screen 4 can hold 355 people. If the cinema were completely full, how many people would be seated?

1141 people

The figures below show the number of people who were watching the 7:30pm showing of a film in each screen:

Screen 1 – 109 people

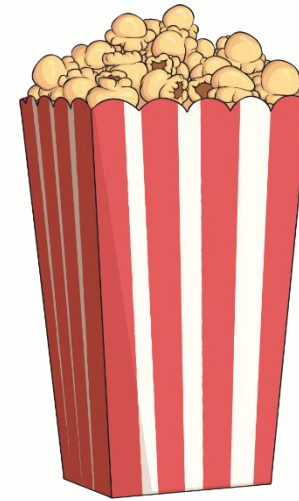
Screen 2 – 192 people

Screen 3 – 184 people

Screen 4 – 78 people

During this film, how many seats were empty in the entire cinema?

$1141 - 563 = 578$
empty seats



Solve Addition and Subtraction Two-Step Problems

Mr and Mrs Adams have won the lottery and booked three holidays!

Holiday 1 costs £1043.

Holiday 2 costs £4932.

Holiday 3 costs £2934.

How much do they owe altogether?

£8909

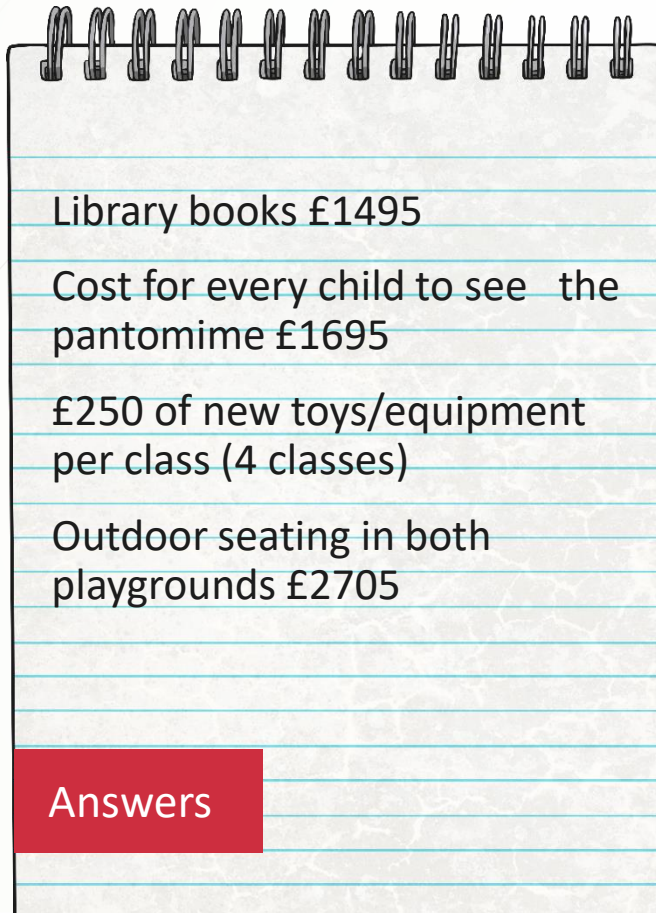
The holiday company offers them a discount of £1059 to be deducted from the total price. What is the new total they must pay?

£7850



Solve Addition and Subtraction Two-Step Problems

Park Lane School won £8000 in a competition run by a newspaper. The Headteacher has made a quick note of how the money has been spent so far:



How much has been spent so far?

£6895

How much is left to spend?

£8000 – £6895 = £1105 left to spend

Solve Addition and Subtraction Two-Step Problems

In a recent survey of 4000 people, it was discovered that 1938 people were left-handed and 2034 people were right-handed. The remainder said they were ambidextrous (could use either hand). How many people were ambidextrous?

$4000 - 3972 = 28$ people said they were ambidextrous.

Answers