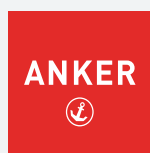


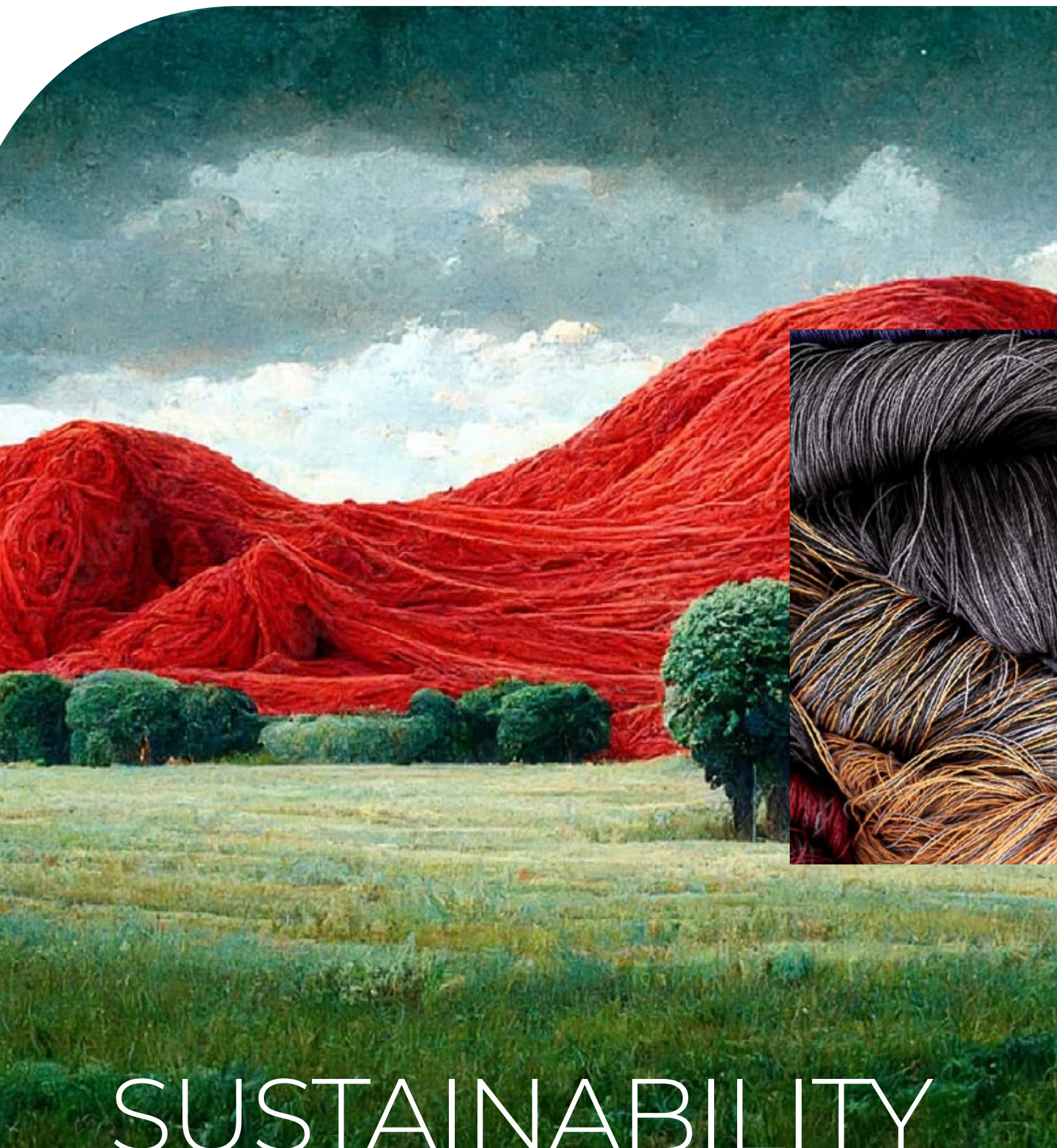
Let us inspire



by



DESIGNER RANGE



SUSTAINABILITY



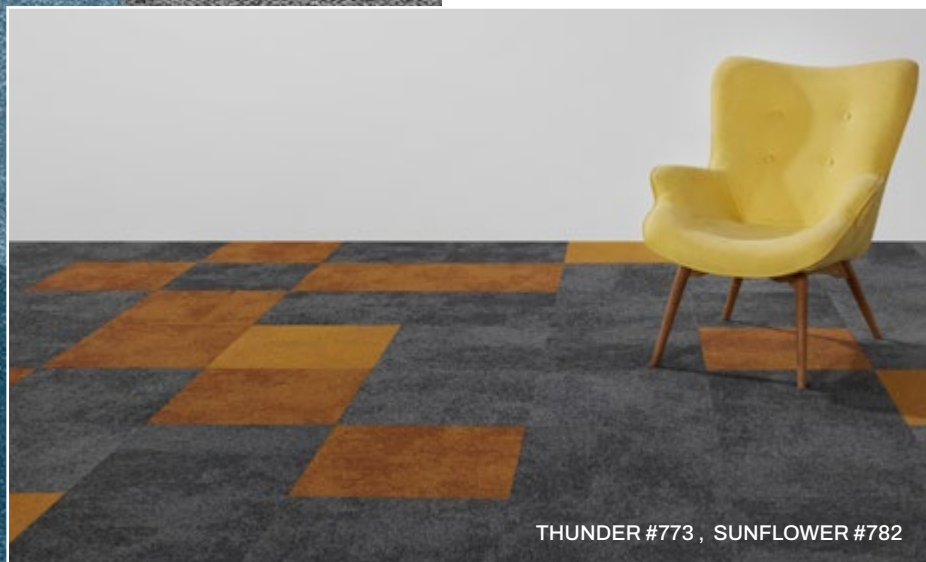
by



floorcoverings

Issues such as sustainability, ecology, recycling and environmental friendliness are key pillars of our German supplier ANKER's corporate strategy. Their vision for the future is to achieve complete sustainability on the basis of resource-neutral and socially responsible production. The company is spurred on every single day by its desire to do the right thing and get ever closer to its goal. At Inspired Floorcoverings, we are a 100% owned and operated Australian company that aspires to achieve the same goals as ANKER, so we sought to bring the German engineered commercial floor coverings product to the Australian market.

Reducing emissions and preserving natural resources, our German supplier ANKER never stops looking for new ways to shape the transition towards more eco-friendly flooring types, backing constructions and fibre materials with its innovative products.



THUNDER #773 , SUNFLOWER #782

MIST - This timeless, sophisticated range blends tranquil, gently gradated tones with vibrant accent colours to provide warmth, harmony and an exciting touch of creativity.

SAND #770	CALM #771	OATMEAL #772	THUNDER #773
SMOKE #775	POWDER #776	ICE #777	ALLOY #778
STEEL #779	COAL #780	MUSTARD #781	SUNFLOWER #782
AUTUMN #783	FIRE #785	CHERRY #786	EARTH #787
LEAF #788	OCEAN #789	PACIFIC #790	ATLANTIC #791
AUBERGINE #132	FOREST #136	NEPTUNE #138	ARCTIC #131

MIST

THUNDER #773 , COAL #780

Inspired Floorcoverings | DESIGNER RANGE



KNIT
HOBART CT300400

Inspired Floorcoverings | DESIGNER RANGE



KNIT - Beautifully crafted in fine Aquafil yarn and backed by PET cushion and double deck polyester spunbound fabric, the new KNIT range is an eco-friendly carpet tile solution that provides outstanding acoustics and pleasurable comfort. This innovative range can dramatically improve the atmosphere in a workplace, inspiring a sense of calmness and well-being while optimising creativity, productivity and concentration levels.

WHITE HAVEN
CT300405



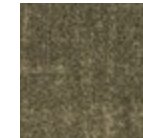
AVOCA
CT300421



HOBART
CT300400



TAMWORTH
CT300411



BENDIGO
CT300409



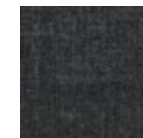
NEWCASTLE
CT300401



BOTANY
CT300402



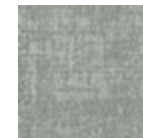
KALGOORLIE
CT300403



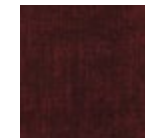
FITZROY
CT300412



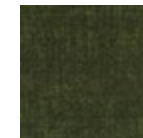
JINDABYNE
CT300398



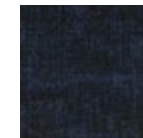
BROOME
CT001414

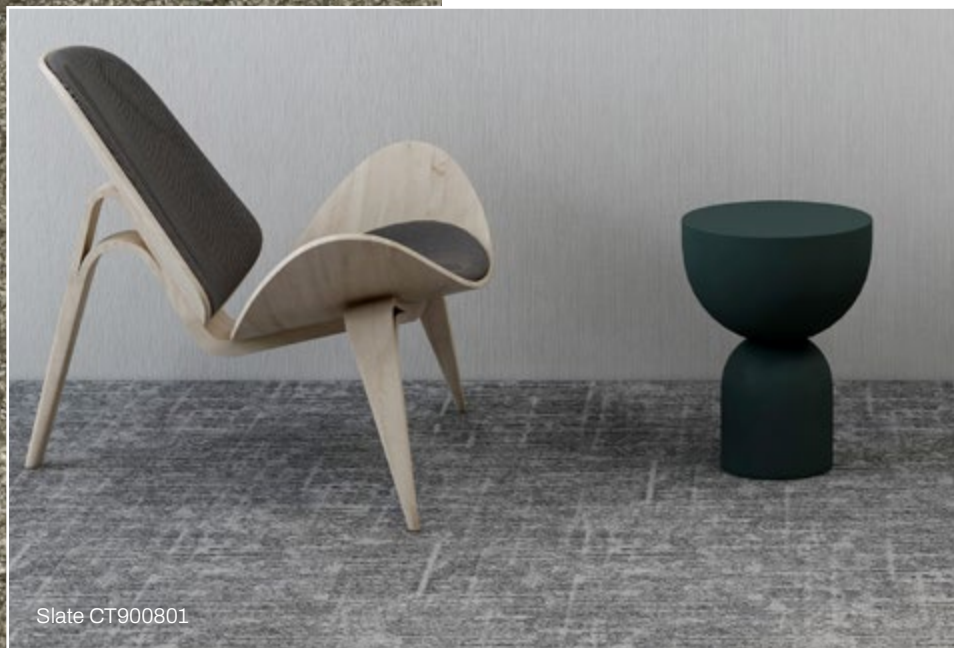


EDEN
CT001413



NOOSA
CT300140





Slate CT900801

STONEWALL - Capturing the essence of rural beauty, Stonewall will calm your bustling city space with gentle hues of nature and subtle textures reminiscent of smooth mountain stones and flowing pathways through the wilderness.

BLUESTONE
CT900802



ONYX
CT900803



SLATE
CT900801



CLAY
CT900806



RIVERSTONE
CT900808



STONEWALL

Riverstone CT900808

Inspired Floorcoverings | DESIGNER RANGE



Dimensional CT900915

HABITAT RHOMB - Beautifully crafted in a subtle blend of muted tones, Habitat Rhomb combines abstract sophistication with classical design. Striking geometric patterns are interlaced and overlapped to create fluidity, movement and understated contemporary appeal.

EXPRESSION
CT900912



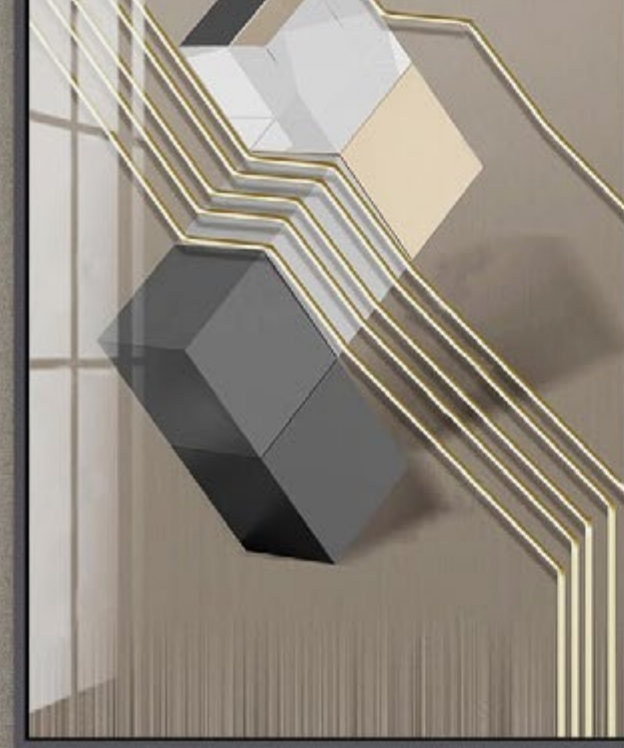
SCULPTURE
CT900913



DIMENSIONAL
CT900915



INDUSTRIAL
CT900916



HABITAT RHOMB

Sculpture CT900913

Inspired Floorcoverings | DESIGNER RANGE



BLUR

Fog CT900481

Inspired Floorcoverings | DESIGNER RANGE



BLUR - Like a fine morning mist in the forest, the lines of Blur are cast in a mysterious veil, creating a hazy beauty as delicate tones of nature are transformed into art.

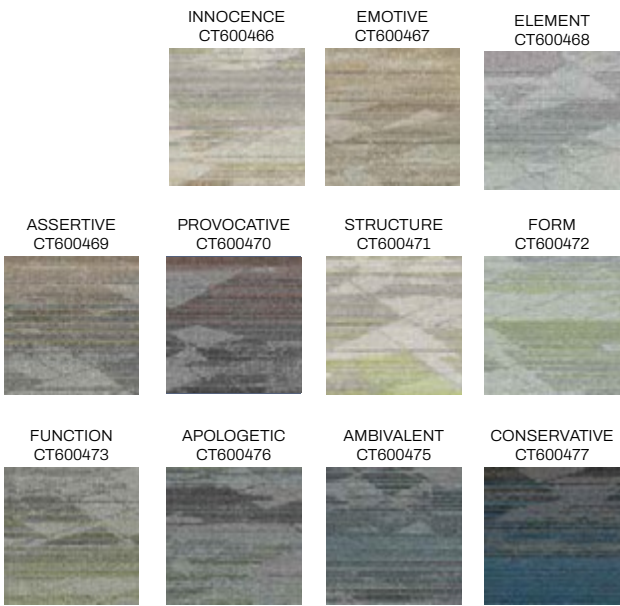




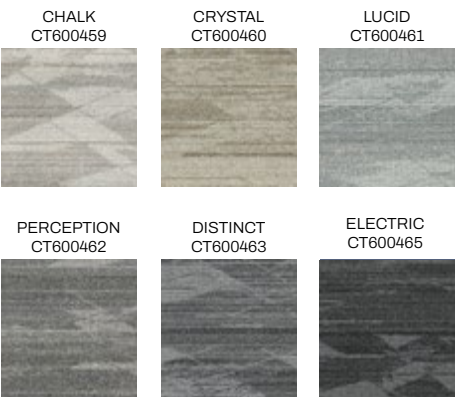
Assertive CT600469

DYNAMIC & MULTI-DYNAMIC - With strong dividing lines and a beautiful blend of contrasting tones, Dynamic & Multi-Dynamic seamlessly delivers an immersive experience between separated areas of space with differing styles and functions.

MULTI-DYNAMIC



DYNAMIC



DYNAMIC & MULTI-DYNAMIC

Lucid CT600461, Innocence CT600466



SHALLOW & WATER SHALLOW

Glacier CT900561, Iceberg CT900591

Inspired Floorcoverings | DESIGNER RANGE



Plaster CT900565 , Mudbrick CT900595

SHALLOW & WATER SHALLOW - Reflecting the fine flow of shallow water as it meanders over tidal flats, the intricate patterns of Shallow creates a picturesque blend of light and shade, reminiscent of sunlight sparkling on the water's bed.

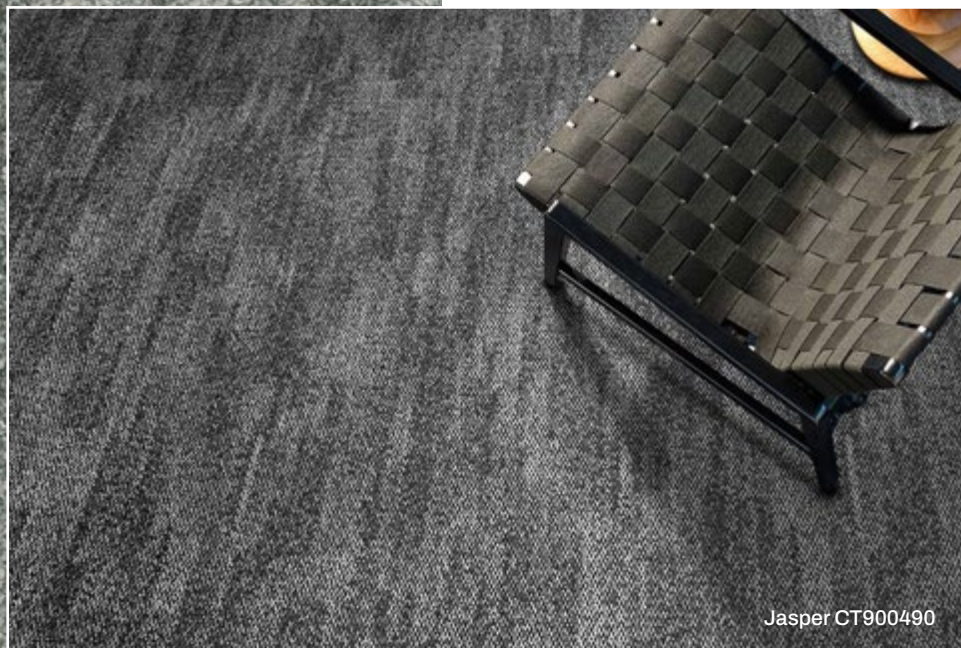
SHALLOW

LAVA CT900566	CINDERS CT900563	TORRENT CT900562	
PLASTER CT900565	SOOT CT900568	DUST CT900567	GLACIER CT900561

WATER SHALLOW

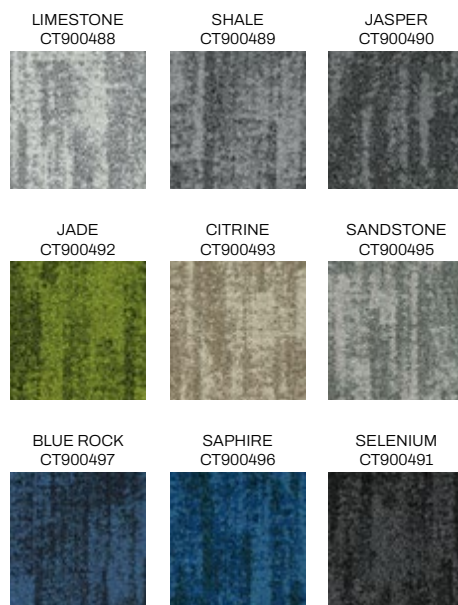
NILE CT900596	ASH CT900593	LANDSLIDE CT900592	
MUDBRICK CT900595	VOLCANIC CT900598	EARTHFLOW CT900597	ICEBERG CT900591





Jasper CT900490

QUARTZ - Inspired by the mineral, Quartz is stunning, long-lasting and infused with dramatic flashes of light. With a diverse colour palette and a soft, woven surface, it enhances both the function and aesthetics of any architectural design.



QUARTZ

Jasper CT900490

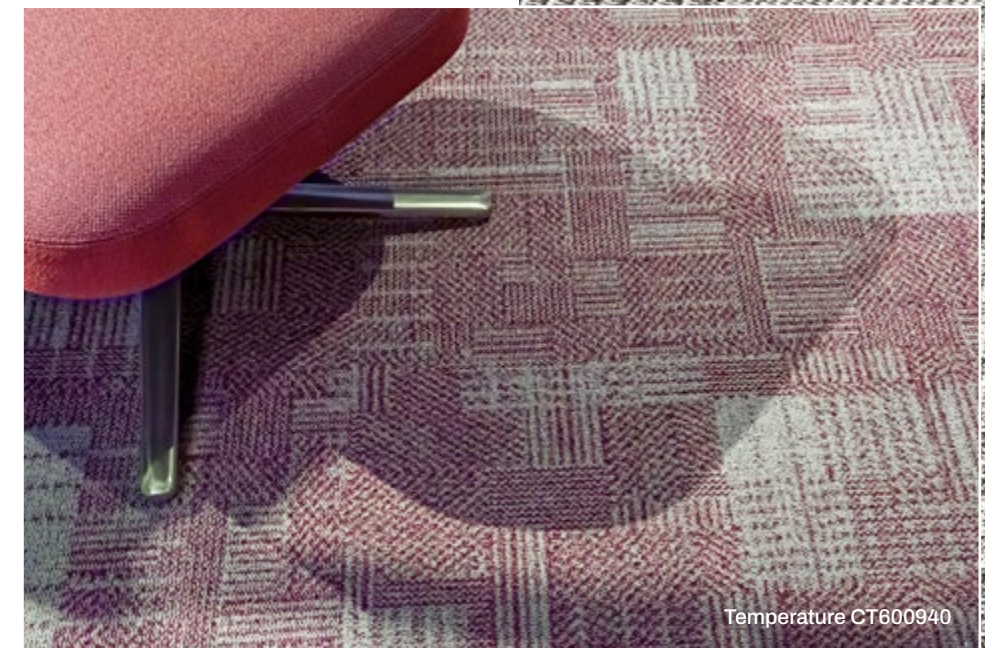
Inspired Floorcoverings | DESIGNER RANGE



NOSTALGIC

Harmonious CT600946

Inspired Floorcoverings | DESIGNER RANGE



Temperature CT600940

NOSTALGIC - Nostalgic is inspired by Josef Albers, a leading Bauhaus artist of the 20th century, who created visual illusions of geometry through an exploration of variations in colour. With subtle adjustments in colour layers and proportions, Nostalgic on Albers' principles, honouring his Bauhaus aesthetics by infusing classic art concepts with innovative visual illusions and geometric forms.

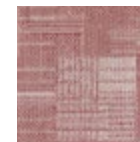
EXPERIENCE
CT600936



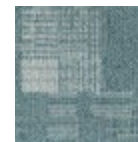
COLD
CT600937



TEMPERATURE
CT600940



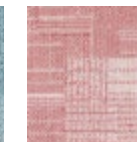
OPTICAL
CT600942



ILLUSION
CT600941



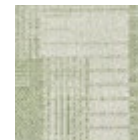
REALIZATION
CT600939



HARMONIOUS
CT600946



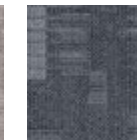
ELEMENTS
CT600945



INTERACTION
CT600932



ISOLATION
CT600938



COLLABORATION
CT600934



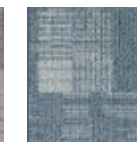
FLEXIBILITY
CT600935

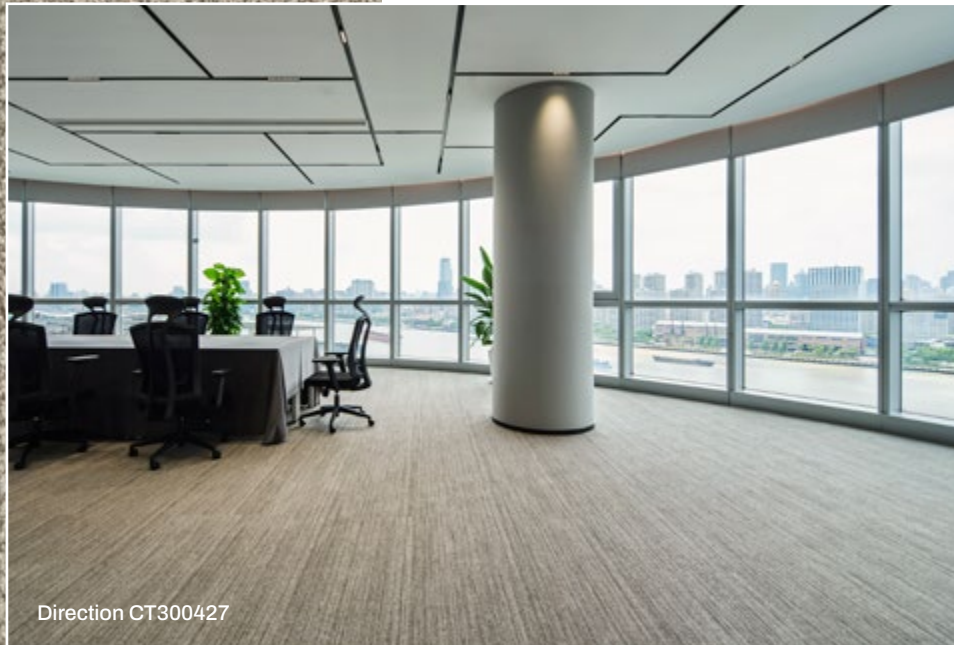


WARM
CT600933



SIMULTANEOUS
CT600943





LINEAR - Linear embodies timeless elegance through its simple yet profound design, transforming any space with quiet sophistication. The clean lines create flow and rhythm, subtly defining areas while maintaining openness. Its balance of sharp lines and negative space adds architectural refinement, making it a versatile choice for both open-plan and smaller spaces.



LINEAR

Connection CT300428

Inspired Floorcoverings | DESIGNER RANGE



TEXRA 019823

019823 - 300

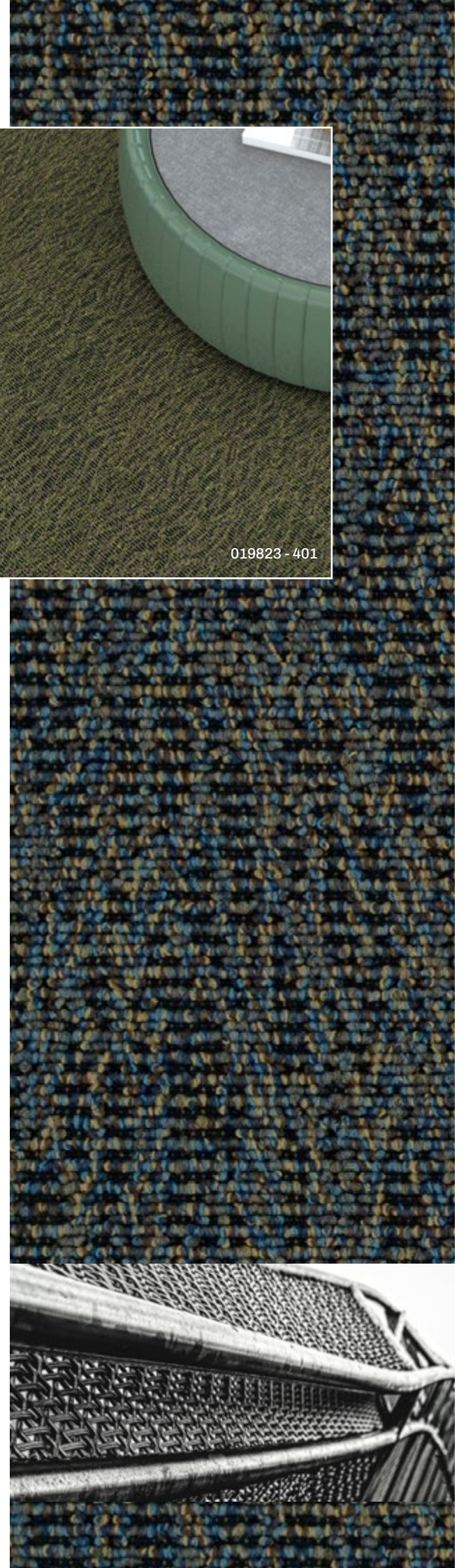
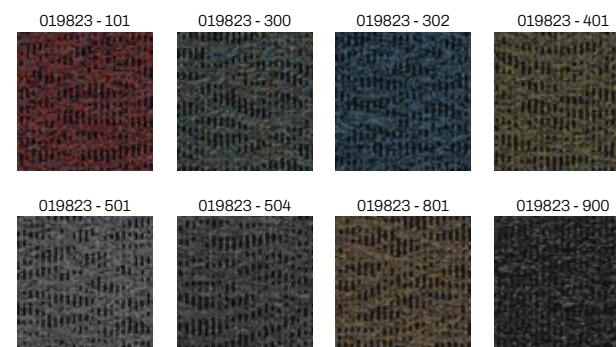
Inspired Floorcoverings | DESIGNER RANGE



019823 - 401

TEXRA - The name TEXRA is derived from the Latin words for “weave” (TEXERE) and “structure” (STRUCTURA).

TEXRA reflects the idea of interwoven strength and organized form, capturing both the craftsmanship of weaving and the solidity of structural design. This unique name embodies the core principles of both creativity and durability.





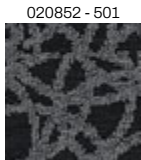
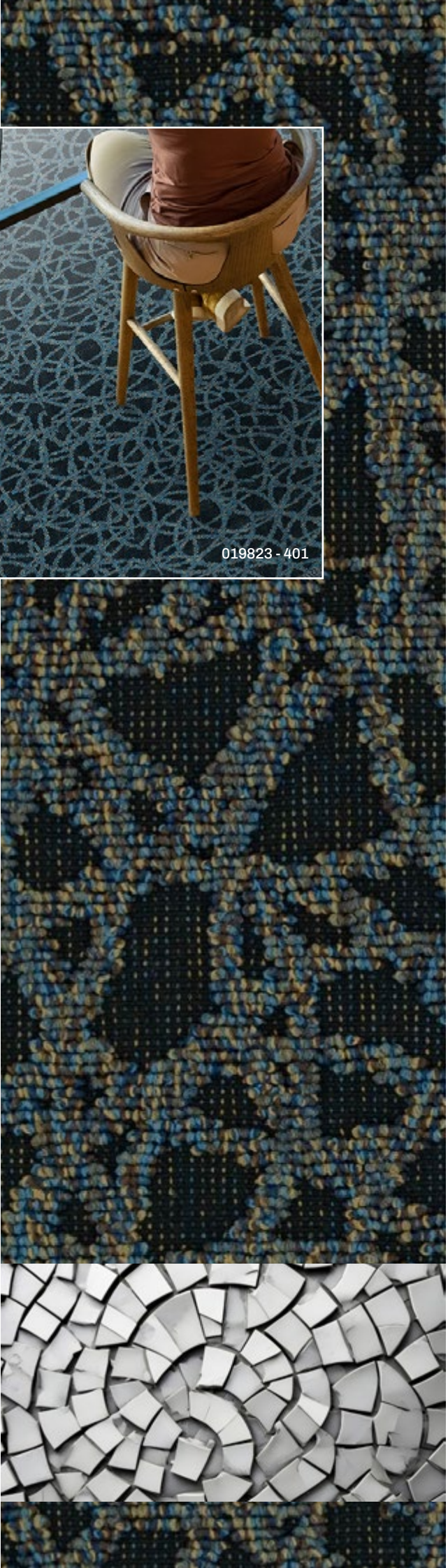
020017-501

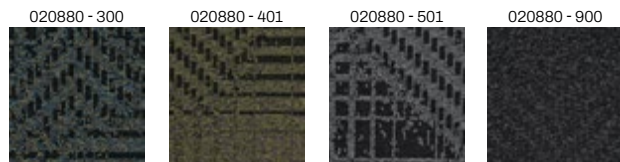
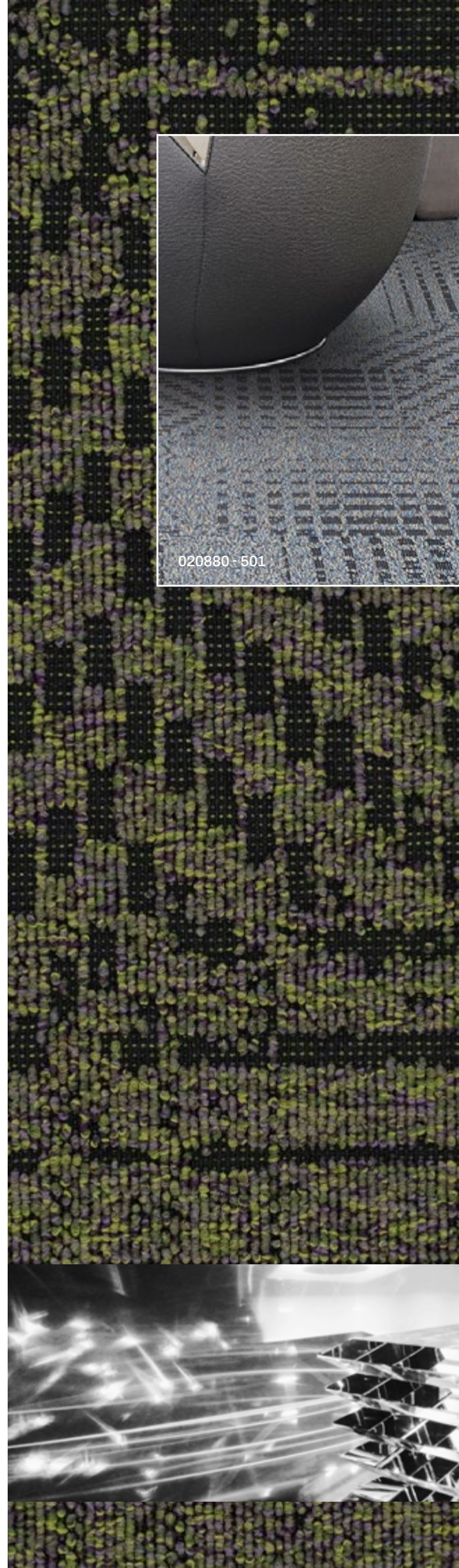


TEXRA 020017

020017-302

Inspired Floorcoverings | DESIGNER RANGE





TEXRA 020880

020880-300

Inspired Floorcoverings | DESIGNER RANGE



TEXRA 020882

020882 - 302

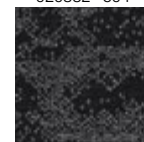
Inspired Floorcoverings | DESIGNER RANGE



019823 - 504



020882 - 302



020882 - 504



020882 - 801



020882 - 900



Since 1990.

GUT carries out comprehensive testing in three main areas: Pollutants, Emissions and Odour. We have a simple and effective precautionary approach to all three issues by ensuring that any banned, or limited use, chemicals are avoided in the manufacture of any component within the supply chain from raw material to finished product of our members' products. Owners will feel at ease knowing they have chosen a carpet that has been GUT certified.

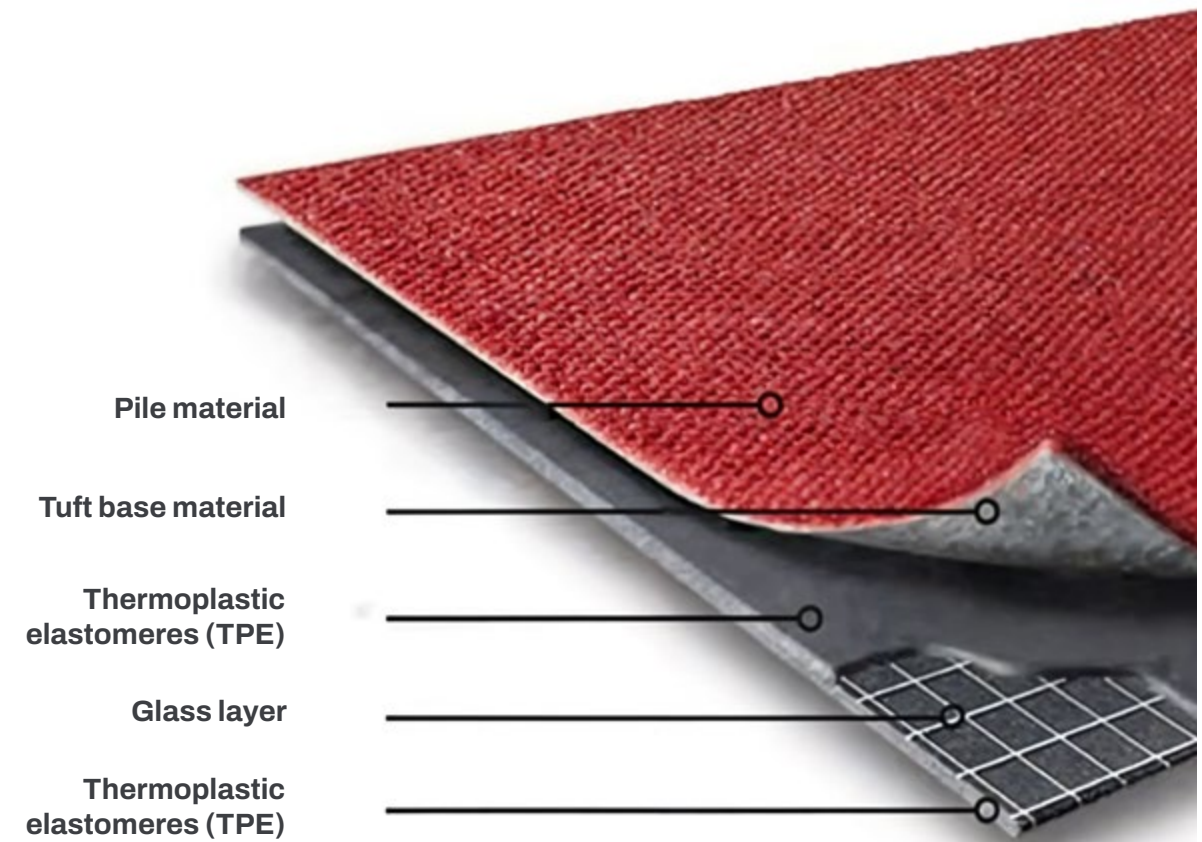
Each series of products has a corresponding number.

ANKER



ANKER is also a founding member of GUT.

To actively support a sustainable circular economy, GUT has developed the following principles: Material-efficient product design; energy-efficient production and resource-saving distribution; longer useful life of products; recycling; and re-use of materials that Recycled or re-generated.



- 100% PVC-free, Bitumen-free
- 100% Recyclable backing system
- Made from a thermoplastic polyolefin compound, Environment friendly thermoplastic materials of food grade (the same raw materials as baby bottles and microwave oven special meal boxes)
- Professional production line, made at high temperature, with high performance precoating and glass fiber, with excellent dimensional stability.
- Superior delamination and edge ravel strength
- Lower VOC's and better smoke density test data, health and safety,
- in line with European environmental requirements



Chalk CT600459, Array CT300426



by



inspired floorcoverings



www.inspiredfloorcoverings.com.au | 1300 288 594